



University
Centre
Rotherham

***FUTURES
FOR***

Everyone



WELCOME



We're here to help you achieve your goals and aspirations, whatever they may be.

Whether you're continuing your studies, changing career path or returning to education, we're here to help you succeed.

With us, you'll learn real-world skills for success. Our industry-experienced lecturers bring passion and apply experience to what they teach. We co-design our courses with key employers, so you can be assured that what you're learning is what is required within your chosen career. You'll be able to soak up the skills needed to hit the ground running in the world of work – whether your career is just beginning, progressing, or changing.

Our smaller class sizes also allow our expert staff to tailor their teaching to your learning styles whilst getting to know you and provide the support you deserve.

OVER 94% 
OF OUR STUDENTS SAID THAT THE TEACHING ON THEIR COURSE WAS GOOD, WHICH IS 10% ABOVE THE NATIONAL AVERAGE*.

You can flexibly fit your studies alongside existing commitments. Some of our courses are delivered over only one to two days a week (depending on subject area), allowing you to gain a higher-level qualification without the time commitment.

Look for the 🕒 symbol next to our course descriptions throughout this prospectus to discover courses you can study over two days or less.

Our first-rate facilities prepare you for the future. The way we work is changing and the way you can learn with us equips you with skills that will help you keep moving forward. As an accredited Google Reference Site, we are recognised by Google for our outstanding use of technology to drive positive outcomes. We use a suite of digital tools including Google Classroom, Google Drive and Google Meet to organise, collaborate and engage with learning.

Our two-storey library is equipped with a wide range of digital and physical resources. Our classrooms are teeming with technology, like our interactive teaching boards, curriculum-specific settings such as photography studios, performance and computing classrooms, graphic design studios, and the latest software for any topics. Laptops can also be borrowed so that you can study in one of our breakout study areas. For social catch-ups, we have a spacious café area and impressive outdoor amphitheatre.

You'll be part of a driven learning community. We're part of the RNN Group alongside Rotherham College, North Notts College, Dearne Valley College and other subsidiary training organisations. We offer a range of higher-level and degree courses at our sites across South Yorkshire and North Nottinghamshire, helping our communities achieve their ambitions.

Your achievements are accredited by top partner universities. Sheffield Hallam University, the University of Hull and the University of Huddersfield accredit our qualifications, so our courses will set you apart in the world of work. We're proud of our students who graduate from a variety of higher-level courses each year.

Our prospectus gives an insight into all the benefits of studying degrees locally, such as gaining specific skills for your dream career and increasing your earning potential. Throughout this prospectus, you can find out more about our available programmes of study, how to apply, ways to get in touch, funding and financial support and more.

Your professional and personal fulfilment is at the heart of everything we do.

* This includes how Tutors make their subject engaging and intellectually stimulating. National Student Survey 2022-2023



CONTENTS

WELCOME

Why Higher Education?	8-9
Why Study with Us?	10-11
Why Study Locally?	12-13
Funding and Financial Support	14-15
Travelling to Us	16-17

WHO WE ARE

We Are University Centre Rotherham	20-21
Our Colleges	22-23
Our Campus Locations	24-25
The Bridge Skills Hub	26-27
The Way We Teach	28-29
Excellent Employer Links	30-31
Higher and Degree Apprenticeships	32-33
Higher Technical Qualifications	34-35

YOUR EXPERIENCE

What our Students Say	38-39
Continuing in Education	40-41
Returning to Education	42-43
A Day in the Life of	44-45
Support and Wellbeing	46-47
Student Experience	48-49
Sustainability	50-51

GET STARTED

Course Levels Explained	54-55
Entry Requirements	56-57
The Application Process	58-59
Get to Know Us	60-61
Our Courses	62-133
Course Index	134-135

WHY HIGHER EDUCATION?



Progressing into Higher Education is an investment in your ideal future. Take ownership of your path and open the door to opportunities related to your passions.

Studying a higher-level course is...

Achieving your Ambitions

We all have aspirations, it's what action you take to turn your goals into a reality. Studying a higher-level course is for anyone wanting to take that next step in their education journey - whether you're coming straight from college or sixth form, or are a mature student looking to step-up in your current job, change direction or start something completely new. Higher-level qualifications equip you with the skills, knowledge, and expertise to excel, both personally and professionally.

Being in the Know

You'll be able to delve into what interests you and you'll be in great company - your class will be full of like-minded individuals and you will be taught by tutors who are industry professionals. Our staff are people in the know and bring real-world experience and knowledge to their teaching. We also have excellent employer links, guest speaker sessions, masterclasses and employer visits, helping you discover a network full of opportunity.

A Boost to your Potential Earnings

As a graduate, over your working life you could be on average £115,000* better off than someone who hasn't studied a higher-level course. You could gain greater financial stability and a serious advantage if you're looking to start earning more, quicker.

*The Institute for Fiscal Studies (2020)

WHY STUDY WITH US



Degrees Accredited by Top Universities

Our degree and higher-level qualifications are accredited by partner universities including Sheffield Hallam University, the University of Hull and the University of Huddersfield, giving you access to top-quality Higher Education courses closer to home.

Study Locally

With us you can study a degree on your doorstep. You're able to keep living at home, save additional money and comfortably accommodate your studies around existing commitments.

Flexible Learning

We offer courses on both a full and part-time basis. Some of our full-time courses are delivered over only one to two days a week (depending on subject area). This allows full-time courses to be accessible no matter what your schedule is, enabling you to develop in something you're passionate about.

Look for the 🕒 symbol next to our course descriptions throughout this prospectus to discover courses you can study over two days or less.

Friendly Campus Community

You'll have access to our purpose-built Higher Education facilities and benefit from smaller and highly-supported class sizes, filled with focused classmates, and be part of a friendly, tight-knit learning community designed to support your development.

Fantastic Student Experience

Our student experience is one of a kind, and your development and wellbeing is our priority. Your voice is a welcome addition to our learning community, and you can be employed as a Student Ambassador, run for a role in the Student Union or become a Student Voice Representative. Our enrichment activities also provide you the opportunity to try new things, develop new skills and meet a variety of new people outside of the classroom.

Industry Experienced Teaching Professionals

Our talented team of lecturers are passionate about their practice and bring with them expert knowledge in their fields and a breadth of experience to their teaching. We are passionate about your development and place your success at the heart of everything we do.

Find out more about the way we teach on pages 28-29.

Excellent Employer Links

Our extensive employer links ensure that our teaching matches local and regional skill needs, as well as offering you experience and future employment opportunities. You'll be able to participate in guest speaker sessions, visits from industry experts and live projects to set up a lifetime of opportunity.

OVER
91%



OF OUR STUDENTS AGREED
THAT WE PROVIDE CLEAR, FAIR
AND HELPFUL FEEDBACK ON
WORK IN A TIMELY MANNER.
THIS IS OVER 14% HIGHER THAN
THE NATIONAL AVERAGE AT
OTHER PROVIDERS*.

*National Student Survey 2022-2023



Image taken from the Rotherham Together Partnership

WHY STUDY LOCALLY?

We are proud to offer our local communities access to higher-level qualifications and degrees to help them achieve their ambitions.

Easy Access to Your Future

Our state-of-the-art university centre is just a ten-minute walk from Rotherham's revamped central train and bus stations. The centre is also close to multiple car parks, allowing easy access to our wide range of courses and facilities.

Investing in Your Community

We're proud to deliver degrees in the heart of Rotherham, contributing to the regeneration of the town and region by helping you realise your potential.

Rotherham is an evolving community and is pressing forward with the ambitious 'Rotherham 2025' plan. The £150m town centre masterplan included the opening of our university centre, New York stadium, a tram-train service, and the Minster Gardens.

Ongoing and future development includes the Forge Island leisure scheme, markets and a library development, improvements to the public realm, and a new leisure and cultural quarter.

Studying locally means building your skills for a better future in a community that is doing the same.

Saving Money

With our tuition fees ranging from £3,000 to £7,600 per year, you can save money by staying at home, as we charge considerably less than the average £9,000-a-year degree required by most traditional universities.

Tailored to Your Time

By studying on your doorstep with us, you can tailor your time and flexibly fit study around existing commitments.

Many of our courses are also delivered over just a few days of the week, including some on evenings, so you can flexibly fit your studies around busy family lives, employment, and other commitments.

Look for the ☺ symbol next to our course descriptions throughout this prospectus to discover courses you can study over two days or less.

FUNDING AND FINANCIAL SUPPORT



Student Loans

Tuition Fee Loans

Our full-time courses and some of our part-time courses are eligible for funding via the Student Loans Company which is how most of our students fund their tuition fees.

Student loans are repayable for graduates from the April following the completion of your course and only when your earnings rise above £25,000 per year.

This equates to income earnings over £480 per week, or £2,083 per month in the UK. This will be deducted from your salary in the same way that tax and national insurance payments are deducted.

For more information on eligibility, the application process and repayment, please visit www.slc.co.uk

Maintenance Loans

You may be eligible for loans and grants to support with living costs during your studies. For more information on eligibility, the application process, potential grants and repayment, please visit the Student Loans Company website.

Advanced Learner Loans

Advanced Learner Loans are tuition fee loans designed for students aged 19 or above*, who are undertaking eligible Level 3 to Level 6 courses. This funding route may be an option for students applying for one of the Level 3 Access to Higher Education courses. More information about the Advanced Learner Loans can be found at www.gov.uk/advanced-learner-loan

For students who can't access tuition fee loans, we offer flexible repayment options.

**If you are aged 19 - 23 years old and studying your first Level 3, you will not pay tuition fees.*

Other Support

Childcare Grant

Full-time Higher Education students with children can apply for a Childcare Grant to help with childcare costs for children under 15, or under 17 if they have special educational needs.

You must be eligible for student finance to apply for a Childcare Grant. For further information and eligibility criteria, please visit www.gov.uk/childcare-grant

Disabled Students' Allowance (DSA)

It may be possible to receive financial support to cover any additional study related costs you encounter. If you have a sensory or physical disability, a medical condition, mental health difficulty or a specific learning disability, such as Dyslexia or Dyspraxia, you may qualify to apply for support. DSA is available to both new and existing students, full-time or part-time and has no age limit. It may be able to support top-up costs for laptop purchases.

If you qualify for DSA then you will need to have a DSA Needs Assessment to establish the support you will require on your course. More information about eligibility and how to apply can be found at www.gov.uk/disabled-students-allowance-dsa

HE Hardship Fund

Students who are struggling financially throughout the year may be eligible for hardship support. This is a one-off payment to support in times of need. To be eligible, students must have all means of financial support through Student Finance England in place and will need to provide evidence of household income.

College Bursary

Level 3 Access to Higher Education Diploma students across all of our Colleges and University Centre Rotherham can apply to be supported with additional costs associated with learning e.g. travel and equipment.

**To find out more about financial support
call us on 01709 722777
or email bursary@rnngroup.ac.uk**

TRAVELLING TO US

Our colleges and university centre are easily accessible by bus, train and car.

University Centre Rotherham and Rotherham College

Rotherham Interchange bus station, is conveniently located close to our town centre campuses and provides great travel access from surrounding areas. We also offer a student bus service from many areas which you can view on our college website.

Scan here to find out more:



Our town centre campuses are also located a short walk from Rotherham Central train station (RMC) which runs a number of local train services as well as the tram train service from Sheffield city centre.

A number of public car parks are located within easy walking distance of our town centre campuses including Drummond Street and Percy Street.

North Notts College **(including the Bridge Skills Hub, Worksop Campus and Retford Campus)**

Worksop and Retford have many bus routes offering access to our colleges from North Nottinghamshire and South Yorkshire.

Worksop train station (WRK) is a short walk away from both North Notts College and the Bridge Skills Hub.

Retford train station (RET) is a 15-minute walk away from our Retford Campus.

North Notts College and our Retford Campus offer free parking for students and visitors.

Dearne Valley College

Dearne Valley College is situated on many bus routes across South Yorkshire. We also offer a student bus service from many areas which you can view on our college website.

The closest train stations to Dearne Valley College are Bolton-on-Deane (BTD), Mexborough (MEX), Swinton (SWN) and Wombwell (WOM).

Dearne Valley College offers free parking for students and visitors.

Travel passes

If you often travel by train you could benefit from a railcard.

A 16-25 railcard can get you 1/3 off rail travel for everyone aged 16-25 for £30 for one year or £70 for three years.

Mature students can also apply for a one-year railcard, which can be extended with evidence of continuing to study every year.

There are tickets available for fares in South Yorkshire that range from 1, 7, 28 day or annual period to make travelling to us cheaper.

If you live in Worksop, a Worksop PlusBus ticket gives you unlimited bus travel on participating operator services, around the urban area of Worksop town.



WHO WE ARE



WE ARE UNIVERSITY CENTRE ROTHERHAM

We're a modern, state-of-the-art campus in the heart of Rotherham, dedicated to providing outstanding outcomes for all of our students.

Your success is at the centre of everything we do, and we invest all of our efforts, expertise and excellent facilities into making that happen.

With us, you can...

Aspire to Achieve

We want you to get everything you can out of your learning experience with us, and that means understanding your motivations and methods. Our tailored teaching provides the perfect learning platform for you to have the best chance at achieving your aspirations. You will have access to regular contact with our industry-experienced lecturers, and brilliant academic delivery, guidance and support.

Gain a Great Deal

Studying with us means achieving an accredited qualification for a great price. Our full and part-time courses cost less on average than most Higher Education providers, allowing you to gain higher-level qualifications on your doorstep whilst building relatively low debt.

Our higher-level and degree qualifications are accredited by partner universities including Sheffield Hallam University, the University of Hull and the University of Huddersfield. This means you have access to a range of excellent courses locally and can flexibly fit existing commitments around study.

Study in State-of-the-art Facilities

We opened in 2018 with the aim of providing outstanding outcomes for local people. How you learn is important, but where you learn is also vital to determining your success. We believe that your learning environment should show investment in your future, and we've invested in a wide range of first-rate facilities. You can access the latest research for your subject in our cutting edge two-storey library and catch-up with your classmates in our modern café and variety of social areas, including our outdoor amphitheatre.



OUR COLLEGES



Rotherham College



North Notts College



Dearne Valley College

University Centre Rotherham is part of the RNN Group alongside Rotherham College, North Notts College, Dearne Valley College, and a number of other subsidiary training organisations.

This means that studying with us gives you access to a range of top-quality Higher Education courses at our excellent facilities across our campuses in South Yorkshire and North Nottinghamshire.

Further details of course locations can be found on our course pages.

For more information about any of our Colleges, please visit:

Rotherham College
www.rotherham.ac.uk

North Notts College
www.nnc.ac.uk

Dearne Valley College
www.dearne-coll.ac.uk



North Notts College is the leading provider of education and training in the North Nottinghamshire area, delivering courses in Worksop and Retford.

We offer a range of higher-level qualifications and degrees at the College's campuses in subjects such as Early Childhood Studies, Health and Specialist Make-up. More recently we also started delivering higher-level qualifications at the new Bridge Skills Hub just a short walk away from the main campus in Worksop, allowing access to higher-level courses within Retford, Worksop and nearby areas.

With free onsite parking and access to local train stations and bus routes, our courses, and your future, is easy to access in your local area.



Rotherham College is a bustling campus based in Rotherham town centre.

Specialising in technical and career-focused training and education, Rotherham College ensures you gain high-quality training and hands-on experience to nurture the crucial skills needed for your future career. We offer a range of higher-level qualifications at our town centre campus including Engineering and Hair and Media Make-up.

Rotherham College is proud to possess excellent facilities and state-of-the-art equipment for all students to access, including an on-site hair and beauty salon, multiple cafés and a training and commercial restaurant, The Wharnccliffe, where you can enjoy a range of appetising cuisine prepared by catering students.



Dearne Valley College serves the communities of Rotherham, Barnsley and Doncaster, increasing access to higher-level courses and skills.

We deliver several higher-level qualifications in areas such as Animal Management, Counselling, Health and Land-Based Industries at our tight-knit, friendly campus.

Dearne Valley College is known for providing students with a first-class learning experience and helping prepare them for a career within their chosen industry.

Studying your qualification at Dearne Valley College will give you access to a suite of first-rate facilities. These include an on-site sports and fitness centre, low ropes, multisport cages, 3G Astroturf pitch and specialist mammalian, reptilian, and avian housing. With plenty of free parking and on-site nursery, our qualifications are easy to access and flexibly fit around existing commitments.

OUR CAMPUS LOCATIONS

University Centre Rotherham

UCR is located on Doncaster Gate, in the heart of Rotherham.

UCR **University Centre Rotherham**
Doncaster Gate
Rotherham
S65 1DA

Rotherham College

Rotherham College is located centrally within Rotherham Town Centre.

RC **Rotherham College**
Eastwood Lane
Rotherham
S65 1EG

North Notts College

Norths Notts College is located in Worksop and is a partner of the Retford Education Centre (also referred to as Retford Campus). Higher-level courses and apprenticeships are also offered at The Bridge Skills Hub.

NNC WC **Worksop Campus**
Carlton Road
Worksop
S81 7HP

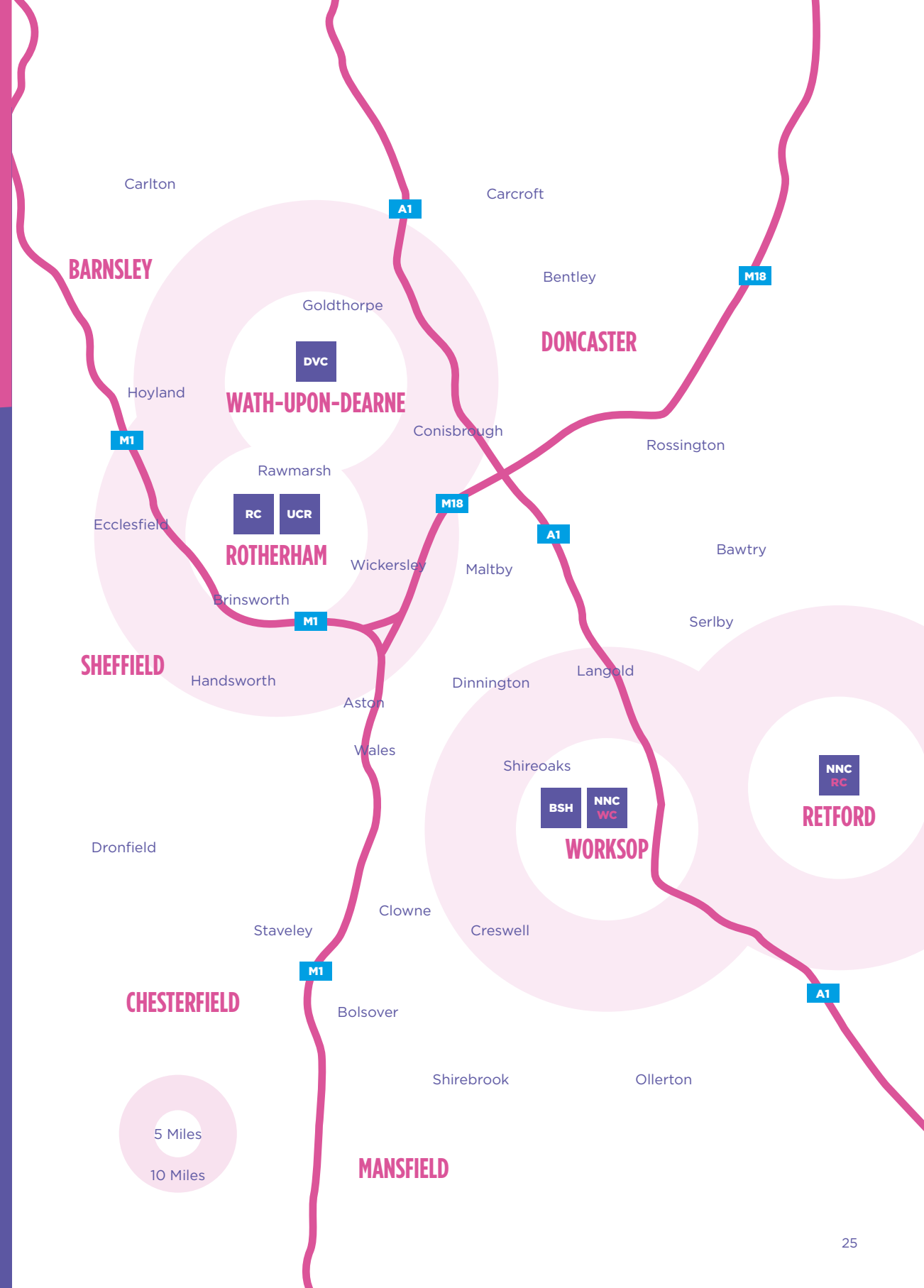
NNC RC **Retford Campus**
Old Hall Drive
Retford
DN22 7EA

BSH **Bridge Skills Hub**
Bridge Place
Worksop
S80 1DT

Dearne Valley College

Dearne Valley College is based in Wath-upon-Deerne in Rotherham.

DVC **Dearne Valley College**
Wath-upon-Deerne
Rotherham
S63 7EW



THE BRIDGE SKILLS HUB WORKSOP

North Notts College delivers a variety of Higher Education (HE) courses at The Bridge Skills Hub located in the heart of Worksop town centre.

Our Courses

Whether you are looking to switch careers, retrain, or further your education, our committed tutors will be there to help you every step of the way. With courses from level 3 to level 5. The Bridge is the perfect place to begin your university education.

Our degree courses are accredited by top universities, meaning you can access the same high-quality education, without having to pay travel or accommodation expenses! We boast strong industry links in the local area and this is reflected in the diversity of the courses we have on offer across the health and social care sector.

Our Facilities

The state-of-the-art Education Centre is kitted out with the latest technology and equipment. It houses six classrooms, several breakout spaces, private offices, an auditorium, two clinical teaching rooms, and its very own clinical suite and mock ward.

These facilities offer students exposure to real-world environments while providing a safe space for learning.



THE WAY WE TEACH



With us, teaching isn't a one-way transaction. It's an immersive experience designed to deliver you the best learning experience possible.

We think learning should...

Put Passion into Practice

Gaining a qualification isn't just a box-ticking exercise. It's a journey where you should develop the right combination of theory and practice, so you have the skills to succeed in your dream career.

Our learning spaces reflect our approach to your future and aim to provide you with professional and practical skills. You can nurture your passion for animal welfare in our animal housing facilities, level-up your professional prospects in our cutting-edge computer rooms, develop your portfolio using the latest software in our graphic design rooms, brush up on your skills in our media make-up rooms, take centre stage in our performance studio, or frame your future in our high-quality photography studio and much more.

Be Fit for the Future

Though our facilities are first-rate, studying should be more than just a classroom. By studying with us you'll be getting to grips with the latest in transferable learning techniques which you can take with you as a graduate.

The way we use technology is constantly evolving and we aim to be at the forefront of modern practices. We provide a study experience which emphasises utilising cutting edge digital resources. As an accredited Google Reference Site, we are recognised by Google for our outstanding use of technology to drive positive outcomes. We use a suite of digital tools including Google Classroom, Google Drive and Google Meet to organise, collaborate and engage with learning.

Outside the classroom, you can use and borrow laptops and enjoy access to our impressive and modern two-storey library, equipped with a wide range of digital and physical resources including e-books, online journals, computers and media.

Expertly Deliver for your Development

Who you learn from is just as important as how and where. Brimming with brilliant minds, our talented teams of lecturers, many of whom are industry experienced, apply real world knowledge to what they teach. Our lecturers listen to industry experts, and incorporate the latest thinking in their delivery – what you learn with us is what you'll use.

In our smaller-than average class sizes, you get the support you deserve to drive your development. Whether it's additional help, questions or one-to-one time, our lecturers personalise their approach based on your learning preferences. You can take control of your learning, be challenged to create excellence and be guided by staff who hold your success at the heart of all they do.



MEET OUR INDUSTRY EXPERIENCED TEACHING TEAM

“My background is illustration and graphic design, with my clients including Hodder and Stoughton, Oxford University Press, and the Royal Institute of Chartered Surveyors. My industry experience feeds into my teaching in many ways, from delivering workshops in digital design and animation to idea generation, working with clients and developing and refining visual language.”

Richard Lyon
Curriculum Team Leader in Visual
and Performing Arts



Scan here to find out more about what Richard's industry experience brings to his teaching.



EXCELLENT EMPLOYER LINKS

Experience the Difference, with our Extensive Employer Links

Your university education is about so much more than classroom-based learning. Our industry-experienced lecturers provide an extensive and hands-on learning experience, where you will build a network of links with employers from a wide range of industries. Our employer links ensure that what you learn, matches the requirements of local and regional skill needs, and offers you the chance to gain valuable work experience.

Who we work with

Our links with businesses ensures that we can provide industry placements and work experience to our students with local and regional employers.

To ensure that you gain vital, hands-on experience and the opportunity to build connections and boost your employment prospects, we work with employers such as the NHS, Premier Foods (Owner of brands such as Cadbury's, Bird's Custard and OXO), AESSEAL, Rotherham Metropolitan Borough Council, Open Minds Theatre Company and Rotherham Music.

Guest Lectures and Live Projects

Throughout your studies, you'll have the opportunity to hear from and interact with a number of industry guest speakers.

Across all of our courses, we work closely with experienced individuals in your chosen industry, to offer a series of talks, live projects, workshops and masterclasses.

We also work with a number of partners to give you the opportunity to attend trade shows, exhibitions and competitions, such as WorldSkills UK.

Careers Advice

Throughout your university experience (including when you graduate as an alumni) you'll have access to a wide range of careers advice and support to secure placements or work experience. With our careers advice, we will help you enhance your CV and provide interview advice and guidance on completing application forms. Whatever support you need, you'll find it through our team of dedicated Careers Coaches.



HIGHER AND DEGREE APPRENTICESHIPS

Earn while you learn. Get your foot in the door. No university fees.

Higher and degree apprenticeships are an exciting way to gain a sought-after qualification and boost your career prospects.

They can be a hands-on approach to getting started in your career, or give your existing career a boost by consolidating your know-how with new knowledge and skills.

We design and deliver our apprenticeships with key local businesses. This ensures you're equipped with the essential experience and skills needed for success in your industry of choice.

You'll be employed for a minimum of 30 hours per week and the cost of your apprenticeship is usually paid through your employer via their Apprenticeship Levy payments or with up to 95% Government-backed funding.

Higher and degree apprenticeships at Levels 4, 5 and 6 are equivalent to a Foundation Degree or above.

Who we work with and how you can apply

If you're already in work, we advise you to ask your employer if they will support you through an apprenticeship; they may have access to Government funding or the Apprenticeship Levy.

If you aren't currently working we can help you find an employer offering higher and degree apprenticeship vacancies. We have developed a wide range of strong links with local employers such as;

- NHS
- AESSEAL
- Rotherham Metropolitan Borough Council
- Local care providers

What can I study?

We offer higher and degree apprenticeships in:

Business Management

- Chartered Manager Degree Apprenticeship, Level 6
- Operations or Department Manager Degree Apprenticeship, Level 5
- Senior Leader Apprenticeship, Level 7

Engineering

- Engineering Manufacturing Technician Level 4

Healthcare

- Lead Practitioner in Adult Care Apprenticeship, Level 4
- Assistant Healthcare Practitioner Apprenticeship, Level 5
- Leader in Adult Care Apprenticeship, Level 5

To keep up to date with our latest offer, visit: ucr.rotherham.ac.uk

To find out more, or to apply, contact our dedicated Apprenticeship Recruitment team.

Phone:
01709 513147
(South Yorkshire office)

01909 504777
(North Nottinghamshire office)

Email: enquiries@rnngroup.ac.uk



HIGHER TECHNICAL QUALIFICATIONS

Higher Technical Qualifications (HTQs) are specialist technical courses developed with employers and delivered by industry experts.

What are HTQs?

HTQs have been developed in partnership with employers and are delivered by industry experts and focus on the skills, knowledge and behaviours that are in-demand by employers. They can also act as a stepping stone to further study, such as an apprenticeship or undergraduate degree.

Whether you're looking to take the next step in your chosen career or want to retrain into a new industry, an HTQ can help you gain the skills you need for a specialist technical job.

The first HTQs, focussing on digital sector subjects like Cyber Security or Software Development, began teaching in September 2022. New qualifications in Health and Science and Construction successfully launched in September 2023. Please visit our website for updates on our HTQs.

What will I achieve?

By completing an HTQ you will also achieve a Level 4 or 5 qualification in your subject area. These technical qualifications include Foundation Degrees, Higher National Certificates and Higher National Diplomas.

The courses are classroom-based with the opportunity to learn practical skills through workshops, role playing exercises, or using industry facilities.

Course Duration

On average an HTQ will take between one and two years to complete if studying full-time. Flexible options such as part-time, online and learning through short courses may also be available.

HTQs are provided by universities, Institutes of Technology, local colleges and independent providers.

Entry Criteria

Many providers will have their own entry criteria, such as minimum GCSE or A level (or equivalent) requirements. If you don't have GCSEs or A levels, you may be eligible for an HTQ through an Access to HE course.

Courses Available

Rotherham College:

- Construction Management (Site Supervisor) HTQ
- Diploma in Cybersecurity (HTQ)
- Diploma Data Analyst (HTQ)

Dearne Valley College:

- Health Science Associate Diploma (HTQ)

From September 2023, University Centre Rotherham, Rotherham College and Dearne Valley College are offering HTQs in digital, construction and health and science.

Email careerscoaches@rnngroup.ac.uk for further information.

YOUR EXPERIENCE



WHAT OUR STUDENTS SAY



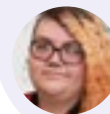
“University Centre Rotherham is very inclusive which creates a great learning environment. I have freedom of expression on my course, which makes it interesting and fun.”



Liam Johnson

Bachelor of Arts (Hons) in Theatre, Acting and Performance

“UCR has allowed me to experience university life in a different way, as a larger university would be overwhelming.”



Ashleigh Lofthouse

Bachelor of Arts (Hons) in Fine and Applied Art

“I enjoy the close-knit atmosphere here. UCR was recommended by my tutors from Rotherham College; they made me believe I could progress to degree level.”



Ryan Widdowson

Bachelor of Arts (Hons) in Media, Moving Image and Photography

“There is a positive social aspect that comes from studying at a smaller university as a great community is created.”



Jake Owen

Higher National Certificate in General Engineering

“Studying locally suits me as I get to stay close to home and it is really accessible.”



Amelia Veal

Higher National Certificate - Level 4 in Animal Management

“The delivery of teaching over one or two days enables me to balance studying with family and working life.”



Kayleigh Machin

Access to Higher Education: Health Science Professions

CONTINUING IN EDUCATION

Taking the next steps after college or sixth form is a big decision, and one that may not always be easy.

Choosing to continue your studies on a higher or degree level course can be exciting and the start of an amazing journey. However, it can also bring worries and doubts about moving away from home or building up student debt.

If you dream of the career you have always wanted, but don't want to move away from home, we put students like you at the centre of everything we do. We will support you with every step of your journey to ensure continuing in education is the best decision you will ever make.

We are a local provider, based in the heart of our communities, that offers a range of higher-level and degree qualifications accredited by top universities, such as Sheffield Hallam University, the University of Hull and the University of Huddersfield.

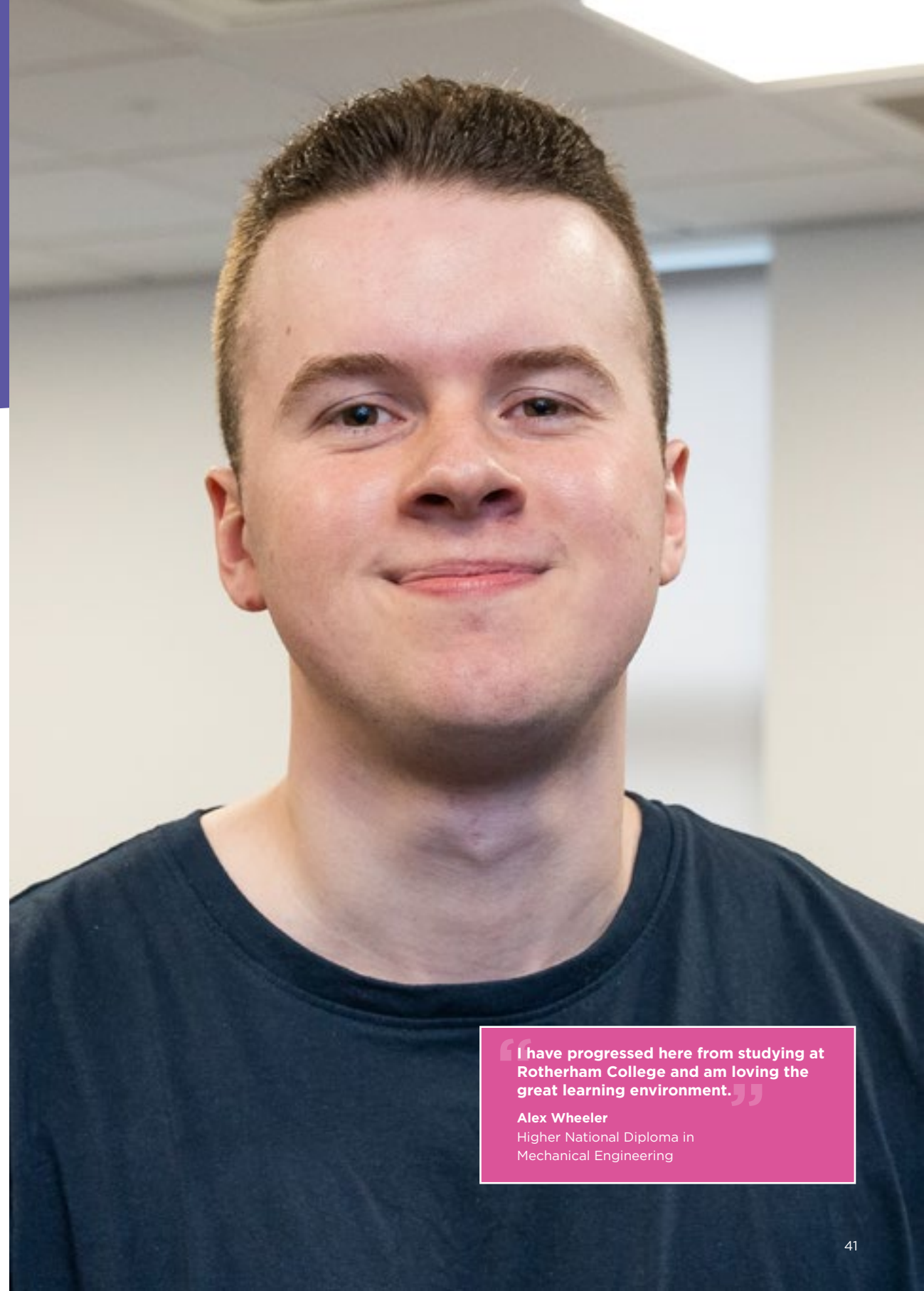
With us you can gain a top-quality degree at lower-than-average fees on your doorstep whilst being assured that the quality standards are maintained to the highest level. Our lecturers are experts in their fields, with plenty of industry experience and employer networks to share with you. We will help you meet your career goals all whilst studying smart and locally.

Our small and friendly campus creates a fantastic student experience, as you will be recognised as an individual. You will learn in a supportive and relaxed environment in smaller classes compared to other traditional universities – meaning you will receive more, and better, access to one-to-one support and guidance. We care about all of our students, and pride ourselves on our close-knit community.



OUR STUDENTS SCORED US OVER 10% ABOVE THE NATIONAL AVERAGE FOR PROVIDING GOOD LEARNING OPPORTUNITIES, INCLUDING BUILDING THEIR SUBJECT KNOWLEDGE AND SKILLS*.

*National Student Survey 2022-2023



“I have progressed here from studying at Rotherham College and am loving the great learning environment.”

Alex Wheeler
Higher National Diploma in
Mechanical Engineering

RETURNING TO EDUCATION



“The teachers are very welcoming and always push me to achieve my goals.”

Caroline Morgan
BA (Hons) in Fine and Applied Art

If you're 21 or over and looking to return to education, you'll be joining our ever-growing mature student learning community – all of whom are taking a firm step in achieving a wide variety of personal and professional goals.

Learning as an adult is something...

...For You

Learning as an adult is a wonderful opportunity for you to be the go-getter you know you either are or can be. It opens a door to a brilliant future and offers you the chance to be successful in something you take ownership of and enjoy.

Many of our courses are delivered over just a few days of the week, including some on evenings, so you can flexibly fit your studies around busy family lives, employment, and other commitments.

Look for the 🕒 symbol next to our course descriptions throughout this prospectus to discover courses you can study over two days or less.

All of our campuses are also within easy access of local amenities and public transport, making us a great choice if you're looking to get back into education and gain higher and degree level qualifications right on your doorstep.

...You Enjoy

You choose what you study, which means learning more about your passions – it's a way to explore something that inspires and excites you. Taking that step in returning to education can be daunting, but it's just the first step on a journey full of increased confidence, achievement, and fulfilled purpose.

You'll be in great company. Many mature students have joined us in their study journey and felt the transition to higher-level study was smooth and they were fully supported. In smaller class sizes, compared to traditional universities, you'll meet like-minded, driven individuals, and will be taught by our insightful lecturers, many of whom bring real-world experience to their teaching. Our staff are also happy to provide any support you need, and we'll always have a friendly face available to offer guidance.

...For your Career

Gaining a new qualification brightens your professional future. Whether you're looking for career or pay progression, or want to change career entirely, the in-depth knowledge and skills you'll learn can help you achieve your goals. Our lecturers have industry contacts, and provide guest speakers, so you'll be able to build a professional network tailored to your passions.

Becoming better educated opens doors to your ideal future and broadens your horizon.

...To Make a Change

The way we approach work, leisure, and even social activities is evolving in the face of emerging technologies and trends. All this change comes from people driven to improve their communities, and we want you to help yours. As the pace of change increases, many of us will need to update our skills or learn entirely new ones. It's an exciting time, and if you'd like to get ahead of the game then returning to education is a fantastic choice.

Returning to education is something for you – and we're here to help you succeed.

Our Specialist Adult Provision

For anyone aged 19+, we offer courses at different levels across a wide range of curriculum at our Colleges including Rotherham College, North Notts College and Dearne Valley College. Our adult provision includes free, informal and short community courses, flexible distance learning courses and part-time industry-recognised professional qualifications.

A DAY IN THE LIFE OF...



Adele Mitchell
Age 37

ACCA (FIA) Diploma in Accounting and Business Level 4

"I enjoy learning alongside a diverse group of people and being able to study whilst allowing me to accommodate for my other commitments."

9.00am

'After dropping my children off at school, and parking in one of the many local car parks, I arrive at UCR which is where my day begins. Being able to have family time whilst still being early for class suits my lifestyle. I like to arrive slightly early to sit and chat with my friends, or print any work off that I may need.'

9.30am

'My lessons start and involve short presentations, work assignments and some round table discussions with my classmates and teacher. We always have a morning break before lunch where we can all go and grab a coffee and catch-up.'

12.30pm

'At lunchtime I usually grab some food from the in-house café with my friends in a take-out box so that we can relax in the social study areas upstairs. We enjoy going here for something to eat as there's always a wide variety to choose from and it makes life easier for me rather than preparing something to bring in.'

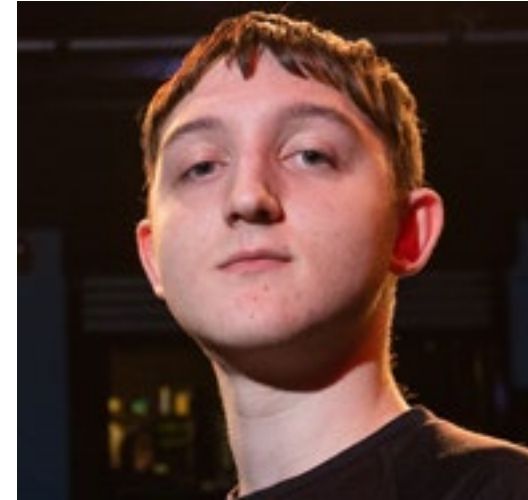
2.00pm

'After lunch I'll usually head into the library, check out some resources I may need to use for self-study and chat with my classmates about anything we may need support with. If there is anything we are unsure of, we will go back to class to ask our tutor, who is always there to help.'

Evening

'Once at home, I spend quality time with my family. I cook tea, and then just relax with my children. I may do some more revision if I feel I need to.'

On the days I'm not at UCR, I work full-time, so my studies fit around my work and commitments. Every now and then I will study in the evening once my children have gone to sleep, meaning my studies are flexible and whilst still allowing me to enjoy family time.



Marcus Kamsika
Age 19

Bachelor of Arts (Hons) in Theatre, Acting and Performance

"The course gives me specific skills which I can use in the industry once I graduate, and the tutors are always there to support me if I need it."

9.00am

'I arrive at UCR and usually relax in the cafe with my friends before class, where we grab a coffee and something to eat. The social spaces make it a great environment to hang out with friends before lessons start.'

9.30am

'Usually once lessons begin, we usually go over our lines, or perform scenes that we need to practise more, which our tutors are always really supportive with. We are normally working on a particular play in class, so practical work is important to perfect our performance and prepare us for the industry.'

12.30pm

'When we break off for lunch, me and my friends will normally head into town together to see what food Rotherham has to offer. UCR is right in the centre of the town so it's a few minutes walk which is really convenient.'

2.00pm

'Once we have had lunch, we'll either find somewhere inside to practise our lines, or may even rehearse in the outdoor amphitheatre. If we've finished studying, we will go and explore Rotherham or Sheffield, and socialise with other classes. The community here is really inclusive.'

Evening

'As soon as I get home, I make sure I fully understand everything I have learned in class that day and make sure I am on top of any deadlines.'

On the days I'm not at UCR, I am fortunate enough to have many good resources at home, so I tend to study in my room on my days off. On weekends, I meet up with my friends, checking out the local nightlife.



OUR STUDENTS SCORED US 14% ABOVE THE NATIONAL AVERAGE FOR STUDENT VOICE. INCLUDING FEELING THAT THEIR 'OPINIONS AND FEEDBACK ARE VALUED AND ACTED ON'*.

*National Student Survey 2022-2023

SUPPORT AND WELLBEING

Learning and wellbeing go hand in hand and it's vital to us that your time here is healthy, holistic, and happy. If you feel at your best, you'll do your best.

Student Support

Our student support staff are a helping hand and friendly face who ensure you make the most of your learning journey. Our staff are also always happy to chat through any concerns and queries.

Our Higher Education Achievement Coach offers academic skills and pastoral support, so you can improve a variety of assignment and organisation-based skills.

Using our Student Services team, you can also book rooms and resources, and be signposted to relevant staff who are happy to provide support tailored to your needs. This can include course guidance, financial support, sexual health advice, help to stop smoking, additional learning support, and more.

For more financial support information, please visit pages 14-15.

We Listen to You

Your learning shouldn't be a one-way transaction; we challenge you to always outdo yourself and expect you to challenge us too. Your voice matters, and we ensure there are opportunities for it to be heard.

We encourage you to have ongoing input into ensuring an effective learning experience, by being part of our Student Voice and Student Representative schemes. Our Student Union provides a platform for our learning community's wants, needs, and opinions, to be recognised.

Our professional Mentors and Counsellors also strive to ensure that you have a fulfilling study experience and feel supported every step of the way.

Disability Support

If you have a disability which affects your study, we will work with you to put an Additional Support Plan in place to ensure you have the right reasonable adjustments. We can also help you to access Disabled Student Allowance if it is appropriate for you.





THE FULL EXPERIENCE

Students can access a range of activities and support available across our sites to add value to their educational experience.

Your Experience

We have a focus upon enrichment throughout your experience. Our enrichment programme includes things such as guest speaker events, student events for example fresher's week, a range of clubs, public speaking events, volunteering opportunities, our student union and enrichment sessions.

Events

We plan many events throughout the year for you to get involved with and enjoy your experience with us, more events continue to be added so it's a good to keep checking back at our website and social media platforms.

For more information please visit ucr.rotherham.ac.uk/student-support/enrichment-and-personal-development

Erasmus Scheme

Another important part of your experience would be to be getting involved with our Erasmus scheme. This once in a lifetime opportunity is a voluntary scheme in which you would be able to travel abroad and participate in work experience to give you the knowledge and international experience of different cultures and workplaces. This is an unforgettable experience to take part in. Previous placements have included Italy, Malta and Spain.

Support

There is a lot of support available to you throughout your time with us. Our student support teams are there to give you a helping hand to ensure you make the most of your learning journey. This support includes additional learning services, health and wellbeing, finances and accommodation.

For more support information, please visit pages 46-47.



SUSTAINABILITY AND WORKING TOWARDS A GREENER FUTURE



RNN GROUP
SUSTAINABILITY

Designed by Student Gracie Firth.

“My logo design consists of a leaf in 4 sections, each representing the four colleges and university buildings in RNN Group. I hope that my logo can help staff and students to recognise environmental issues and how we can play a part in reducing them.

Gracie Firth
Graphic Design Student

Sustainability is central to how we operate at University Centre Rotherham and the RNN Group, something that all staff and students contribute to.

Climate change in particular is having an impact on us, here in South Yorkshire with frequent periods of drought, wildfires and flooding.

We have to change the way we heat and power our buildings, and the way we run our business, to reduce our greenhouse gas emissions and to make our campuses a home for nature. As educators we have an added duty to teach our students about sustainability, in a place in which sustainability is commonplace. We're committed to being sustainable in all that it does and is looking at ways it can do this whilst being innovative.

The Sustainable Things We Do

As a Group, here is a list of the many actions we are taking to reduce our footprint:

Energy and Utilities

The Group has a number of solar panels / solar heaters and wind turbines as well as a ground source heat pump at one college to produce clean energy, as well as capturing rainwater for use and moving to LED lights.

Travel and Travel Reduction

We operate a number of Electric charging points and have a salary sacrifice scheme for bike users, bike boxes for secure cycle storage and shower facilities for bike users too. Not only that, more meetings are conducted digitally to remove travelling between sites and there are hybrid working opportunities for most staff.

Our Transport provider Zeelo - the first global bus platform to offer 100% carbon neutral services - is committed to all-electric vehicles by 2030. Since September 2022 Zeelo have supported:

Saved 10.01 tonnes of CO2 (3.2Kg per rider) on RNN Group Bus Routes / Taken 2,853 car journeys off the road on RNN Group Bus Routes.

Recycling and Upcycling

Our students run clothing rails across the Group for pre-loved clothing to be picked up by another learner and we use recycled wood, metal and plaster across our construction departments as well as recycling cardboard and paper.

Environment and Sustainability Committee

Our learners regularly talk about ways we can make things better and then act on these.

Google Reference College

Through the use of Google Workspace for education, we have significantly reduced printing not only reducing printing costs but supporting our journey to becoming more sustainable by reducing paper usage and energy.

Go Local

We make a point of using local contractors and partners as our suppliers.

Flora and Fauna

We support the 'No Mow May' and we have wildlife gardens, woodland management in operation, are part of the Big Schools Bird Watch and Dearne Valley College is a Hedgehog friendly campus.

Print and Paper

As a Group we have moved to non PVC banners which does not involve the use of fossil fuels and all paper that we use for our literature is FSC graded or recycled.

Not only that, we are moving away from printing lots of guides and using QR codes linked to our website on small business cards to reduce our use and reliance on paper.

GET STARTED





COURSE LEVELS EXPLAINED

We are proud to offer a range of higher-level and degree qualifications. Your starting point depends on your existing qualifications.

Level 3 »	Level 4 »	Level 5 »	Level 6 »	Level 7
Foundation Year Access to Higher Education courses are available if you do not meet the entry requirements or are looking for a career change. You will study for one year in preparation to study a Higher Education course.	Higher National Certificate (HNC) This is the first year of a degree in a subject and equips you with the knowledge and skills for employment in your chosen field. An external body awards this qualification.	Higher National Diploma (HND)/ Foundation Degree Studying at Level 5 provides you with advanced employability skills by building on practical knowledge of your chosen course.	Top-up/Bachelors Degree Completing a Bachelors Degree, through either three full years of study or a one-year Top-up, provides you with a holistic understanding of your specialist subject.	Masters Degree This one-year course enables you to further specialise in an area once you have completed a Bachelors Degree.

Please see the relevant course information pages for further detail on your chosen level of qualification.



ENTRY REQUIREMENTS

What do I need to apply?

We list entry requirements on all course pages. You'll be interviewed to assess your suitability for the course; relevant work experience is also considered on an individual basis.

Some of our courses require certain amounts of UCAS tariff points. These can be found on each course page.

Wondering how many UCAS tariff points your qualifications are worth? The table opposite shows current UCAS tariff points for some popular qualifications. You can also calculate your points via the UCAS tariff point calculator at: www.ucas.com/ucas/tariff-calculator

AS Level	A Level	BTEC Extended Diploma	BTEC Diploma	BTEC Subsidiary Diploma	BTEC Certificate	Tariff Points
		D* D* D*				168
		D* D* D				160
		D* D D				152
		D D D				144
		D D M				128
		D M M	D* D			112
			D* D			104
		M M M	D D			96
		M M P	D M			80
		M P P	M M			64
	A*			D*		56
	A	P P P	M P	D		48
	B					40
	C		P P	M		32
					D*	28
	D				D	24
A						20
B	E			P	M	16
C						12
D						10
					P	8
E						6

UCAS tariff points are not the only way of applying for our courses. All applicants are invited to an interview to assess their suitability for the course; relevant work experience is also considered on an individual basis.

THE APPLICATION PROCESS

You can apply to study a course at any of our campuses or Colleges specialising in your chosen subject. Our sites include **University Centre Rotherham, Rotherham College, North Notts College and Dearne Valley College.**

Contact Details

University Centre Rotherham

Website: ucr.rotherham.ac.uk
Email: ucr@rotherham.ac.uk
Phone: **01709 722806**

Rotherham College

Website: www.rotherham.ac.uk
Email: info@rotherham.ac.uk
Phone: **01709 362111**

North Notts College

Website: www.nnc.ac.uk
Email: contact@nnc.ac.uk
Phone: **01909 504500**

Dearne Valley College

Website: www.dearne-coll.ac.uk
Email: learn@dearne-coll.ac.uk
Phone: **01709 513355**

1. Search

Find a course that interests you in this guide or by visiting our website at: ucr.rotherham.ac.uk

Why not visit us at one of our **Open Events**, speak to course tutors and view our facilities?

You can see our **Open Event dates on the next page.**



2. Apply

You can apply for some of our courses via UCAS at: www.ucas.com/students, using '**University Centre Rotherham**', '**RNN Group**', or our centre code '**R52**'.

OR

Apply through our website. You can complete our application form at any time throughout the year via our websites.



3. Interview

You will be invited to an interview to ensure that the course is right for you. During your interview, you'll meet the teaching team and can ask any questions and discuss any Additional Learning Support requirements.

You may also be required to bring along proof of your qualifications, a portfolio of work and/or audition as part of your interview process.



4. Offer

If you are successful at the interview stage, you'll receive either an unconditional or conditional offer for a place on the course. A conditional offer may be subject to exam results and references.

GET TO KNOW US

Attending one of our Open Events provides you with the opportunity to explore our dedicated Higher Education campus, speak to tutors in the subject areas you're interested in studying, meet other prospective students and get a feel for the courses on offer.

Other Ways to Explore your Options

We're always happy to talk with you about your future.

Bespoke guided tours can be provided of our study and social facilities.

Have an individual talk with one of our specialist staff for any queries surrounding courses, funding and financial information or student support.

You can contact us to request a tour, individual talk or ask any other queries using the contact information below.

FOLLOW US

 **University Centre Rotherham - UCR**  **@universitycentrerotherham**
 **@RotherhamUni**  **@RotherhamUni**  **University Centre Rotherham (UCR)**

CONTACT US

Tel: 01709 722806 **Email: ucr@rotherham.ac.uk**



Open Events

Book your place at: ucr.rotherham.ac.uk/open-events

2023

Saturday 18th November

10.00am – 12.00pm

2024

Saturday 27th January

10.00am – 12.00pm

Wednesday 1st May

3.30pm – 6.30pm

Saturday 16th November

10.00am – 12.00pm

COURSES

Access to Higher Education (HE)	64-71	Education	98-107
Accounting, Business and Management	72-75	Engineering	108-113
Animal Management and Land-Based Industries	76-79	Hair and Beauty	114-125
Arts and Graphics	80-85	Media, Moving Image, and Photography	126-129
Caring Professions	86-93	Performance	130-133
Computing and Digital	94-97	Course Index	134-135

We make every effort to ensure the information within our Higher Education Prospectus is accurate and a true representation of the courses we are offering in 2024-25. However, we do reserve the right to make changes if necessary. All information correct at the time of going to print.

ART AND DESIGN

Access to HE Diploma: Art and Design Level 3

Location

Rotherham College

Course Duration

1 year - Full-time

Apply online via

Our college websites

Awarding Body

Certa

Course Fee

£3,928

Our Access to Higher Education (HE) courses are university recognised full Level 3 qualifications which will help develop your skills and abilities so you can progress on to a HE course, even if you left school without a technical qualification or A-Levels.

Course Overview

This one-year course will enable you to generate a portfolio of art and design work to support your progression onto university-level study. It will provide you with a valuable introduction to a wide range of creative disciplines, allowing you to explore before specialising.

This course will re-introduce students aged 19 and above to art and design practice and prepare them for transition onto study at Higher Education level.

Career Opportunities

This course supports your progression onto university-level study. Following study at Higher Education within art and design you could go into a number of careers including Fine Artist, Illustrator, Animator, Graphic Designer, Fashion Designer, Textiles Designer, Architect, Interior Designer or Product Designer.

Modules Covered

- Fine Art, Painting and Drawing
- Textiles and Printmaking
- Graphic Design and Illustration
- 3D Design and Sculpture
- Contextual Studies

Entry Requirements

- GCSE maths and English at grade C/4 or above or equivalent
- You must be 19 years or over

Why Study With Us?

Throughout the academic year, there will be masterclasses, educational visits and exciting opportunities for you to work on live briefs.

You will receive support and guidance from tutors with expert knowledge of the creative industries and have a good understanding of business practice.

Our excellent resources and studios will give you the opportunity to develop your skills to reach your full potential.

Assignment briefs will challenge and encourage you to develop your specialist skills in order to progress to work as a practitioner, gain employment within the creative industries or go onto further study.

ACCESS TO HIGHER EDUCATION

COMPUTING

Access to HE Diploma: Computing Level 3

Location

Rotherham College

Awarding Body

Certa

Course Duration

1 year - Full-time

Course Fee

£3,928

Apply online via

Our college websites

Course Overview

Studying this programme will allow you to build up your academic skills and confidence while providing you with the knowledge you need to progress onto studying computing at a higher level at college or university. This one-year course is aimed at students aged 19 or above.

Modules Covered

- Components of Computer Systems
- Database Development
- Networks
- Project Development
- Software Development
- Spreadsheet Modelling
- Systems Analysis
- Website Design

Why Study With Us?

You will work on live client briefs and be taught by industry professionals, who will guide you on your journey to becoming a digital practitioner. You will have access to our industry-standard facilities which includes PCs for stripping and re-building.

As well as gaining invaluable work experience, you will participate in projects such as PC repair clinics and code club and develop skills such as employability and teamwork.

There will be the opportunity for you to take part in national and global competitions as well as field trips, which have previously included visits to the Bradford Media Museum and gaming events.

Career Opportunities

Upon successful completion of this course you may be eligible to begin a Higher Education qualification in a number of areas including computing, computer science, software engineering, business and IT, computer security networks and forensics, web development or games development.

You could also go into employment as a Website Designer, Software Engineer, Network Technician, Data Analyst or Programmer.

Entry Requirements

- GCSE English and maths at grade C/4 or above or equivalent
- Successful interview with a course tutor
- You must be 19 years or over

CRIMINOLOGY AND POLICING

Access to HE Diploma: Criminology and Policing

Location

Dearne Valley College

Awarding Body

New Skills Academy

Course Duration

1 year - Full-time

Course Fee

£3,022

Apply online via

Our college websites

Course Overview

This one-year programme is designed for adults wishing to progress to university to study professional degrees within criminology and policing.

The course will equip you with the fundamental knowledge, skills and behaviours required to help you progress to have a career in the Police as a PC or part of the CID entry programme, criminal psychology or forensic psychology, as well as the criminal justice system including border force and the prison and probation services.

This course represents the latest in professional standards, which ensures that you have the knowledge and expertise to progress further academically and professionally.

Modules Covered

- Study Skills
- Law
- Psychology
- Criminology
- Sociology

Why Study With Us

Our students have successfully progressed onto a wide range of degree programmes at a variety of different universities across the country. You will be encouraged to gain experiences linked to criminology and policing, and to develop your knowledge, skills and behaviours specific to the subjects you are studying.

Career Opportunities

Upon completion of this course you could progress onto further study or use your qualification to enhance your prospects of going into a policing career, criminal psychology or forensic psychology, as well as the criminal justice system including border force and the prison and probation services.

Entry Requirements

- GCSE English language and maths at grade C/4 or above. Level 2 equivalents, such as functional skills will be considered
- Successful interview with a course tutor
- You must be 19 years or over

HEALTH SCIENCE PROFESSIONS

Access to HE Diploma: Health Science Professions Level 3

Location

University Centre Rotherham
North Notts College
Dearne Valley College

Course Duration

1 year - Full-time

Apply online via

Our college websites

Awarding Body

Skills and Education Group
Access (SEGA)

Course Fee

£3,384

Course Overview

This one-year programme is designed for adults wishing to progress to university to study professional degrees within the health and social care sector.

The course will equip you with the fundamental knowledge, skills and behaviours required to help you progress to the next steps to become the Social Workers, Nurses, Midwives, Paramedics and the Allied Health Professionals of the future.

Modules Covered

- Biology/Science
- Psychology
- Health
- Study Skills

Why Study With Us

Our students have successfully progressed onto a wide range of degree programmes at a variety of different universities across the country.

You will be encouraged to gain experiences linked to the health and social care sector, and to develop your knowledge, skills and behaviour specific to the subjects you are studying.

Career Opportunities

Completing this course opens up opportunities to study courses including:

- Nursing (Adult, Mental Health, Child)
- Midwifery
- Physiotherapy
- Paramedic Practice
- Social Work
- Occupational Therapy
- Diagnostic Radiography
- Radiotherapy and Oncology
- Operating Department Practice
- Nurse Associate
- Assistant Practitioner
- Biomedical Science
- Biology
- Criminology and Psychology
- Public Health and Nutrition
- Health and Human Sciences
- Professional Practice in Health/Social Care

Entry Requirements

- GCSE English and maths at grade C/4 or above or equivalent
- A maths Functional Skills qualification may be accepted following discussion with the course leader
- You must be 19 years old or over

SCIENCE

Access to HE Diploma: Science Level 3

Location

University Centre Rotherham
Rotherham College

Course Duration

1 year - Full-time

Apply online via

Our college websites

Awarding Body

Certa

Course Fee

£3,384

Course Overview

This one-year course will allow you to build up your academic skills and confidence whilst providing you with the knowledge you need to progress onto Higher Education.

This course is an ideal starting point for individuals looking for a career change or career development. Upon successful completion of this course, you will be eligible to begin a Higher Education qualification in science.

Modules Covered

- Chemistry
- Physics
- Biology
- Maths
- Study Skills

There will also be sessions giving advice and guidance on the UCAS application process and developing a personal statement.

Why Study With Us?

Our highly qualified and skilled staff are industry specialists and will support you to achieve your full potential and aspirations.

You will be able to develop a broad understanding of the wider spectrum of subjects in science.

Career Opportunities

Following completion of this course you can go into further study at university level and go into employment in biomedical sciences, nutrition and dietetics, medicinal and pharmaceutical chemistry, radiography, optometry, ophthalmology, marine biology or forensic sciences.

Entry Requirements

- GCSE English language and maths at grade C/4 or above. Level 2 equivalents, such as functional skills will be considered.
- Successful interview with a course tutor
- You must be 19 years or over



MEET OUR INDUSTRY EXPERIENCED TEACHING TEAM

“I take my experiences as a registered nurse, in both primary and secondary services, with me everyday in the classroom. Through my experience and through updating my knowledge and skills, I can enhance my teaching and allow students to visualise the links between theory and practice.”

Gina Burgess
Curriculum Team Leader in
Access Health Science Professions



ART AND DESIGN

Foundation Diploma in Art and Design

Location

University Centre Rotherham
Rotherham College

Awarding Body

Certa

Course Duration

1 year - Full-time

Course Fee

£4,500*

*Free to 18 year olds

Apply online via

Our college websites

Course Overview

By choosing this qualification you will perfect your skills and build a portfolio of artwork bridging the gap between study at Level 3 and degree level study.

You'll gain a valuable introduction to a wide range of creative disciplines, which allows you to experiment before specialising in your chosen area and enables you progress onto a range of prestigious, highly competitive degree courses in art-based specialisms.

You will develop your skills in the Adobe Suite programmes, including Adobe Photoshop, Adobe Illustrator and Animate, where you will explore the principles and fundamental theories of art and design so you can specialise in a particular area of interest.

On completion you will gain the following UCAS Tariff points: 80 for a pass, 96 for a Merit and 112 for a Distinction.

Modules Covered

This course is in three parts:

Part one allows you to explore your creative thinking through introductions to the main areas of art and design including fine art, graphic design/illustration, animation, fashion and textiles and 3D design.

Part two builds on the skills and understanding of the first part, allowing you to specialise and develop your skills in a chosen area e.g. fine art, illustration, animation interior design, architecture, ceramics, textiles, product design, craft.

Part three allows you to become more independent as you plan and implement your own major project in preparation for study at degree level.

You will investigate a wide range of skills and processes within art and design including, drawing, painting, printmaking, ceramics, sculpture, model-making, digital art, screen printing and laser-cutting.

Why Study With Us?

You will have access to professional standard studios and equipment including laser cutting, screen-printing, 3D workshop, printmaking, ceramics and digital.

Your assignment briefs will challenge and encourage you to develop your specialist skills in order to progress to work as a practitioner, to work within the creative industries, or onto further study.

There will be exposure to masterclasses, educational visits and exciting opportunities for you to work on live briefs. Visits include a major European city and galleries throughout the UK.

Career Opportunities

There are also a wide range of Higher Education courses available at UCR.

- Fine Artist • Illustrator • Interior Designer
- Textiles Designer • Printmaker • Animator
- Product Designer • Ceramicist • Architect
- Digital Artist • Curator

Entry Requirements

- A-Level at grade C or above in art or two AS Levels at grade C or above to include art GCSE OR
- Successful completion of BTEC/UAL Level 3 Extended Diploma in Art and Design
- English and maths at grade C/4 or above or equivalent
- A portfolio of artwork is desirable

ACCOUNTING

ACCA (FIA) Diploma in Accounting and Business Level 4

 Delivered over two days or less

Location

University Centre Rotherham

Course Duration

1 year - Part-time

Apply online via

Our college websites

Awarding Body

ACCA

Course Fee

£2573 +ACCA reg fees

BUSINESS HIGHER/DEGREE APPRENTICESHIPS

We also offer an Operations/
Department Manager Level 5, Level 6
in Chartered Management and Level 7
Senior Leader Degree Apprenticeship.

To find out more about our Higher and
Degree Apprenticeships, contact our
Apprenticeship Team on:

01709 513147

or email enquiries@rnngroup.ac.uk

ACCOUNTING, BUSINESS AND MANAGEMENT

Course Overview

The ACCA Diploma in Accounting and Business is the highest level of ACCA's Foundation in Accounting (FIA) suite of qualifications. The course is made up of your first three Chartered examinations and provides a solid platform for progression onto the Final Applied Skills Chartered examination papers at Levels 5, 6 and 7.

Modules Covered

- Financial Accounting
- Management Accounting
- Finance and Business Technology

Why Study With Us?

All members of the teaching team have worked in the industry and are nationally-recognised as an outstanding provider of accountancy tuition.

We have great links with the Barnsley and Rotherham Chamber of Commerce, local accountancy firms, awarding bodies and national publications, all of whom support the work we are doing with future Accountants.

Career Opportunities

Upon successful completion of this course you could go into employment as a Management Accountant, Financial Accountant, Assistant Accountant, Payroll Officer, Senior Accounts Clerk, Financial Analyst or Ledger Supervisor.

Entry Requirements

- Must have undertaken AAT/ACCA Levels 2 and 3 or have extensive relevant professional experience in an accounting function
- You must be 19 or over



MEET OUR INDUSTRY EXPERIENCED TEACHING TEAM

"I worked as an Accountant and Company Auditor for 10 years prior to teaching - this was in the Medical Industry and Private Training Industry. I decided to teach to offer my knowledge to others, and have been teaching for seven years."

Conal White
Curriculum Team Leader in Accounting



"The tutors create a great support network, and everybody is really helpful. I get to learn new things and meet new people."

Natalie Jarvis
Accounting and Business Student

BUSINESS AND MANAGEMENT

Bachelor of Arts (Hons) in Business and Management

 Delivered over two days or less

Location

University Centre Rotherham

Awarding Body

University of Hull

Course Duration

3 years - Full-time

Course Fee

£6,900 per year

Apply online via

Our college websites
UCAS Centre Code 'R52'

Course Overview

This course covers the main functional areas of business, so is broad in approach and will provide diverse employment opportunities across business disciplines.

Business enterprise is also a focus of the course for a creative approach towards business and for those considering self-employment.

Modules Covered

Year 1

- The Marketing Planning Process
- Accounting and Finance
- Business Environment
- Introduction to Contemporary Business Practices
- Applications for Contemporary Business Practices
- Introduction to Enterprise

Year 2

- Engaging with Enterprising Organisations
- Business Law
- Research Methods
- Financial Literacy and Awareness
- Managing People
- Integrated Marketing Communications

Year 3

- Specialism – Finance and Accounts, Marketing, Management/HR
- Business Improvement Strategy
- Business Improvement Action and Control
- Dissertation

Why Study With Us?

Level 4 (Year 1) and Level 5 (Year 2) study will focus on the underpinning business knowledge required to understand how business disciplines interrelate. Level 6 (Year 3) will develop acquired knowledge and abilities to not only become an effective Business Manager, but also the entrepreneurialism to develop a start-up business.

The final year of the programme will develop research, and effective writing of the practical skills utilised to plan a business venture. Each student will develop a business plan and focus on a specialism in either Marketing, Human Resources Management or Accounting. Each student will write a dissertation on the practical skills used and the research required to develop a business venture and to execute it.

Career Opportunities

Upon successful completion of this course you could go into self-employment, join a business start-up, secure a higher role within a business environment such as finance, or become a graduate trainee within an enterprise context.

Entry Requirements

- Level 3 BTEC (or equivalent) with a minimum of Merit, Merit, Pass profile

OR

- Three A-Levels at C or above
- GCSE English and maths at C/4 or above (or Level 2 equivalent)
- Relevant work experience would also be an advantage and contribute to entry requirements for mature learner entry

FUTURE CAREERS IN ACCOUNTING, BUSINESS AND MANAGEMENT

The accounting, business and management sector is ideal for those who are organised and have an interest in budget management and marketing.

Types of roles available:

Finance Officer

Finance Officers help to manage the finances of an organisation by overseeing book-keeping, general accounting and other financial and related clerical functions.

Day-to-day tasks:

- Recording financial transactions on computer systems
- Producing financial forecasts and carrying out financial audits
- Dealing with payroll, invoices, expenses and VAT
- Resolving payment queries for external contractors
- Creating monthly, quarterly and annual budget reports
- Presenting report findings to finance managers

Working environments

Primarily office based.

Average salary
£25,200*

Event Manager

Event Managers organise and coordinate events, business conferences and exhibitions and run promotional, business and social events.

Day-to-day tasks:

- Plan events to cater for a clients brief, within a set budget and timescale
- Research venues, contacts and suppliers, and negotiate prices
- Book venues, entertainment, equipment and supplies
- Oversee the design of publicity material and promote events
- Sell exhibition stand space and arrange sponsorship deals
- Follow health, safety and insurance regulations

Working environments

At an office, event venue or a client's business. The role may require travel and nights away from home.

Average salary
£26,700*

In-demand skills

In-demand skills that commonly appear in job descriptions for roles within the accounting, business and management sector include:

Communications, Sales, Management, Customer Services and Detail Oriented.

*EMSI 2021 **nationalcareers.service.gov.uk



ANIMAL MANAGEMENT AND LAND-BASED INDUSTRIES

ANIMAL MANAGEMENT

Higher National Certificate - Level 4 in Animal Management
Higher National Diploma - Level 5 in Animal Management

 Delivered over two days or less

Location

University Centre Rotherham
Dearne Valley College

Course Duration

HNC: 1 year - Full-time
HND: 1 year - Full-time

Apply online via

Our college websites
UCAS Centre Code 'R52'

Awarding Body

Pearson BTEC

Course Fee

£6,900 per year

Course Overview

The course provides you with a wealth of transferrable experience and employability skills either to take you straight into industry or onto further study.

The Pearson BTEC Level 5 Higher National Diploma is recognised by Higher Education providers as meeting admission requirements to many relevant Animal Management related courses.

Modules Covered

Level 4

- Health and Welfare
- Ecological Principles
- Managing a research project
- Anatomy and Physiology
- Managing Animal Collections
- Animal Nursing
- Teaching a Specialist Subject
- Business Environment

Level 5

- Biological Principles
- Research project
- Animal Boarding
- Work experience
- Ethics and Consultation
- Wildlife Conservation
- Breeding & Genetics

Why Study With Us?

Our lecturing staff have a wide range of expertise, having worked in a variety of animal-related industries and have many years of experience.

We have a broad range of animals at Dearne Valley College, including livestock and exotics.

You will also have the opportunity to be involved in our land-based retail outlet.

You'll study the theory side of your learning at University Centre Rotherham's modern campus and develop practical, hands-on knowledge at our animal housing facilities at Dearne Valley College.

Career Opportunities

Upon successful completion of these courses you could go into employment as an Animal Keeper, Animal Controls or Health Officer, Animal Trainer, Animal Nutritionist, Animal Instructor or Animal Behaviour Consultant. You could also go into technician roles in an animal lecturer wildlife capacity and animal science laboratories.

There are also management role opportunities for veterinary practices, animal centres, pet stores, kennels and catteries.

Entry Requirements

- A BTEC Level 3 qualification in Animal Management, Equine Management or another relevant subject

OR

- A-Levels demonstrating a strong performance in a relevant subject
- GCSE English and maths at grade C/4 or above or equivalent



"I love getting to work with a range of exotic species, and we are constantly learning new topics and information about the animals. Working so closely with the animals is very rewarding and gives me loads of experience."

Daisy Carter
Animal Management Student

ANIMAL MANAGEMENT AND LAND-BASED

Higher National Certificate - Diploma Level 4 in Animal Management
(Wildlife and Countryside Conservation)

Higher National Diploma - Diploma Level 5 in Animal Management
(Wildlife and Countryside Conservation)

 Delivered over two days or less

Location

Dearne Valley College
University Centre Rotherham

Awarding Body

Pearson BTEC

Course Duration

1 year - Full-time (per level)

Course Fee

£6,900 per year

Apply online via

Our college websites or
via UCAS

Course Overview

This course provides you with a wealth of transferable experience and employability skills either to take you straight into industry or onto Higher Education.

The Pearson BTEC Level 4 Higher National Certificate and Level 5 Higher National Diploma are recognised by Higher Education providers as meeting admission requirements to many relevant Wildlife Conservation related courses, for example:

- BSc (Hons) in Wildlife Conservation
- BSc (Hons) in Zoo Animal Management
- BSc (Hons) in Applied Animal Science
- BSc (Hons) in Animal Conservation and Biodiversity
- BSc (Hons) Ecology and Conservation

Additionally, after completing the Level 5 qualification, students have the option to apply for a Top-up one year course which, upon completion, could provide them with a full BSc (Hons) undergraduate degree.

Modules Covered

Level 4 example units:

- Principles of Ecology and their Applications
- Managing Environmental Resources
- British Wildlife
- Endangered Species Conservation
- Managing a Successful Project
- Animal Health and Welfare

Level 5 example units:

- Wildlife Conservation
- Habitat Restoration and Repair
- Biological Principles
- Woodland Management
- Conservation and Biodiversity
- Research Project

Why study with us?

Our lecturing staff have a wide range of expertise, having worked in a variety of animal and wildlife conservation-related industries and have many years of experience.

At Dearne Valley College we have access to a range of habitats, including woodland and a wildlife pond and the site is located near-by to the beautiful RSPB Old Moor reserve.

You will also get the opportunity to be involved in our land-based retail outlet.

Career Opportunities

Upon successful completion of these courses you could progress onto a 'Top-up' course, from which you could graduate with a full BSc (Hons) undergraduate qualification. You could also move into employment as an Animal Keeper, Animal Controls or Health Officer, Countryside ranger, Education Officer, Animal Instructor or Conservation Project Officer. You could also apply for roles in an Animal Lecturer capacity. There are Project Officer and management role opportunities for wildlife rehabilitation clinics, animal centres, environmental charities and ecological surveying organisations.

Entry Requirements

- A BTEC Level 3 qualification in Animal Management, Countryside Management/ Equine Management or another relevant subject

OR

- A-Levels demonstrating a strong performance in a relevant science-based subject
- GCSE English and maths at grade C/4 or above or equivalent
- Mature learners to be assessed on an individual basis dependant upon experience

FUTURE CAREERS IN ANIMAL MANAGEMENT AND LAND-BASED INDUSTRIES

The animal management and land-based sector is ideal for those who care about improving animal welfare or who enjoy working outside in physically demanding settings.

Types of roles available:

Veterinary Nurse

Veterinary Nurses provide assistance to veterinarians in the treatment and care of sick or injured animals.

Average salary
£20,800*

Day-to-day tasks":

- Keep the practice and equipment clean and hygienic
- Prepare animals for treatment and assist vets during procedures
- Administer injections, medication and take x-rays
- Take care of in-patient animals
- Support and talk to pet owners about treatment and care of their animals
- Reception and administrative duties

Working environments

You could work at a veterinary practice or at an animal welfare centre. Your working environment may be physically and emotionally demanding. You may need to wear a uniform and protective clothing.

Zoologist

Zoologists study animals and their behaviours, and work in sectors including agriculture, conservation, pharmaceuticals or for the Government.

Average salary
£33,000*

Day-to-day tasks":

- Carry out field and laboratory research
- Study animals in their natural environment or in captivity
- Identify, record and monitor animal species, and produce detailed reports
- Use complex procedures, like computerised molecular and cellular analysis, and in-vitro fertilisation
- Give presentations and publish information in journals and books
- Supervise technicians

Working environments

You could work in a laboratory or at a research facility. Your working environment may be outdoors some of the time and you'll travel often.

In-demand skills

In-demand skills that commonly appear in job descriptions for roles within the animal management and land-based sector include:

Enthusiasm, Customer Service, Communications, Consulting and Compassion.



MEET OUR INDUSTRY EXPERIENCED TEACHING TEAM



“We are proud to work with local businesses on a client basis such as Wentworth Woodhouse, Instant Print, Grimm & Co and YPPA. Working with live clients can sometimes lead to students earning placements with the clients or being offered additional work.”

Humairaa Hussain
Lecturer in Graphics

ARTS AND GRAPHICS

FINE AND APPLIED ART

Bachelor of Arts (Hons) in Fine and Applied Art

Location

University Centre Rotherham
Rotherham College

Course Duration

3 years - Full-time

Apply online via

Our college websites
UCAS Centre Code 'R52'

Awarding Body

University of Hull

Course Fee

£6,900 per year

Course Overview

This stimulating, hands-on course comprises of practical workshops, lectures and gallery visits. The programme supports the development of your studio practice within fine art, craft, ceramics or textiles, with the option to specialise or work across disciplines.

Emphasis is placed upon creative experimentation with a variety of media and the development of individual ideas and approaches.

Modules Covered

Year 1

- Visual Communication
- Studio Practice: Ceramics
- Contextual and Cultural Practice 1
- Studio Practice: Textiles
- Studio Practice: 3D Materials Exploration
- Studio Practice: Fine Art

Year 2

- Specialist Practice 1
- Contextual and Cultural Practice 2
- Studio Practice: Live Brief
- Specialist Practice 2
- Professional Practice 1

Year 3

- Extended Practice 1
- Dissertation
- Extended Practice 2
- Professional Practice 2

Why Study With Us?

We provide smaller study groups with training from experienced professionals in industry settings. Specialist facilities in screen printing, ceramics, 3D design and fine art will allow you to explore a wide range of techniques and processes within the dedicated studio space to develop your practice.

Our connections will allow you to gain the latest skills and knowledge needed to be successful in the art and design industry.

You will be supported by staff who are experts in their field and encouraged to develop a resourceful and independent approach, that will prepare you for artistic practice in the real world.

Career Opportunities

Upon successful completion of this course, you could go into employment as a Fine Artist, Textiles Designer, Ceramicist, Community Arts Worker, Art Teacher* or Art Therapist*

**Requires further study and additional qualifications.*

Entry Requirements

- A relevant Level 3 qualification
- GCSE English and maths at grade C/4 or above or equivalent
- A portfolio of artwork



“UCR has allowed me to experience university in a different way, as a larger university would be overwhelming.”

Ashleigh Lofthouse
Fine and Applied Art Student

GRAPHIC DESIGN

Foundation Degree in Graphic Design

 Delivered over two days or less

Location

University Centre Rotherham

Awarding Body

Sheffield Hallam University

Course Duration

2 years - Full-time

Course Fee

£6,900 per year

Apply online via

Our college websites
UCAS Centre Code 'R52'

Course Overview

This course will provide you with an opportunity for you to fulfil your creative ambitions and develop your understanding of current design practice.

You will gain an overview of the whole design and production process. It will give you the knowledge, understanding and skills to enter a range of careers in the graphic arts industries.

Work-based learning is at the heart of this course and is embedded into the modules.

Modules Covered

Year 1

- Design Techniques and Processes
- Graphic Image Making and Communication

Year 2

- Work-based Design Projects
- Specialist Creative Response

Why Study With Us?

The teaching team have a range of experience from practice within the industry with local, national and international networks. They can offer real-world advice to help develop your practice.

You will be based in our professional design studio space which provides a stimulating learning environment, all fully equipped with the latest Mac/Adobe software.

Live projects are set by designers and creatives including Eleven Design/Human Studios/Wentworth Woodhouse/Grimm & Co amongst many others. Students are offered placements to gain insight into the industry and to develop their professional practice.

You will have access to the lecture programme at Sheffield Hallam University where you will be able to see professional graphic designers and creatives and have access to their learning resources.

There's also the opportunity for field trips to local and international venues accompanied by a yearly residential to places such as Paris, Rome, Barcelona, New York and Berlin.

Career Opportunities

After successful completion of this course, you could top-up your qualification to a Level 6 or pursue employment in graphic design, illustration, UX/UI Design, branding, marketing or alternatively you could become self-employed as a Freelance Designer.

Entry Requirements

- A relevant Level 3 qualification or substantial relevant experience
- GCSE English and maths at grade C/4 or above or equivalent
- A portfolio of work
- All applicants who are non-native English speakers, or who have not studied the final two years of school in English, must have an IELTS score of 6.0 or above

GRAPHIC COMMUNICATION DESIGN

Bachelor of Arts (Hons) in Graphic Communication Design (Top-up)

 Delivered over two days or less

Location

University Centre Rotherham

Awarding Body

Sheffield Hallam University

Course Duration

1 year - Full-time

Course Fee

£6,900 per year

Apply online via

Our college websites
UCAS Centre Code 'R52'

UCAS Points

64

Course Overview

This course will provide you with an opportunity to fulfil your creative ambitions and develop your understanding of current design practice.

It will equip you with the necessary knowledge, understanding and skills required for success and future employment in the graphic design sector.

Modules Covered

Part One

- Explore and study an area of interest such as illustration, typography, branding or UX/UI design
- Explore and investigate a research topic that will provide the basis for practical work
- Construct a written project proposal on a research topic within a specialist practice
- Review and evaluate progress, analyse ongoing strengths and weaknesses
- Attend workshops, seminars and lectures lead by industry professionals
- Students are also encouraged to enter the Design and Art Direction, New Blood Student Awards each year, to enhance their professional practice and further develop a creative, professional quality portfolio of work

Part Two

- Research and production of a practical body of work
- Develop an ongoing professional practice by engaging with a range of institutions, local industry and commercial partners
- Graduation project presentation at the Final Year Show at UCR. This is a celebratory event attended by friends, family, industry partners, local design studios and academic institutions

Why Study With Us?

The teaching team have a range of experience from practice within the industry with local, national and international networks. They can offer real-world advice and guidance to help develop your practice.

You will be based in our professional design studio space which provides a stimulating learning environment, all fully equipped with the latest Mac/Adobe software.

Live projects are set by local and national designers and creatives including Eleven Design, Human Studios, Wentworth Woodhouse, Grimm & Co amongst many others. Students are offered placements to gain insight into the industry and to develop their professional practice.

You will have access to the lecture programme at Sheffield Hallam University where you will be able to see professional graphic designers and creatives and have access to their learning resources.

There's also the opportunity for field trips to local and international venues accompanied by a yearly residential to places such as Paris, Rome, Barcelona, New York and Berlin.

Career Opportunities

After successful completion of this course, you can pursue employment in graphic design, illustration, UX/UI Design, branding, packaging, advertising, marketing or alternatively you could become self-employed as a Freelance Designer.

Entry Requirements

- A relevant Level 5 qualification
- GCSE English and maths at grade C/4 or above or equivalent
- Successful interview with a course tutor
- A portfolio of work
- All applicants who are non-native English speakers, or who have not studied the final two years of school in English, must have an IELTS score of 6.0 or above



FUTURE CAREERS IN ARTS AND GRAPHICS

The arts sector is ideal for those who are detail-oriented and have a passion for creativity.

Types of roles available:

Artist

Artists create original works of art using appropriate techniques, materials and media, design artwork and illustrations and restore damaged pieces of art.

Day-to-day tasks**:

- Work from your own ideas, or a commission from an individual or an organisation
- Sell your work through an agent or through galleries, exhibitions, shops or online
- Research subjects, materials and new artistic techniques
- Network with agents, dealers, gallery owners and other artists
- Attend exhibitions, join artists' groups and run local art projects
- Work as 'artist in residence' – running classes and workshops in places like schools, prisons or hospitals

Working environments

You could work in a creative studio, in a workshop or from home.

Average salary
£28,800*

Graphic Designer

Graphic Designers use illustrations, visual and multimedia techniques to convey a message for informational, entertainment, advertising, promotion or publicity purposes.

Day-to-day tasks**:

- Discuss the client's requirements and come up with creative ideas
- Produce rough drafts and present your ideas
- Prepare designs using specialist software, and produce a final layout
- Make presentations to clients for feedback and approval
- Explain requirements to other design professionals
- Keep up with design trends and developments in software tools

Working environments

You could work in a creative studio, in an office or at a client's business.

Average salary
£28,200*

In-demand skills

In-demand skills that commonly appear in job descriptions for roles within the art sector include*:

Communication, Enthusiasm, Self-Motivation, Problem Solving and Innovation.

*EMSI 2021 **nationalcareers.service.gov.uk

CARING PROFESSIONS HIGHER/DEGREE APPRENTICESHIPS

We also offer a **Higher Apprenticeship Level 4 Lead Practitioner in Adult Care**, **Higher Apprenticeship Level 5 Assistant Practitioner in Health** and **Higher Apprenticeship Level 5 Leader in Adult Care** where you can combine hands-on learning with studying on-site at University Centre Rotherham or The Bridge Skills Hub in Worksop.

To find out more about our Higher and Degree Apprenticeships, contact our Apprenticeship Team on:

01709 513147

or email enquiries@rnngroup.ac.uk

CARING PROFESSIONS

THERAPEUTIC COUNSELLING

Level 4 Diploma in Therapeutic Counselling

Location

Dearne Valley College

Course Duration

2 years - Part-time

Apply online via

Our college websites

Awarding Body

CPCAB

Course Fee

£4,670

Course Overview

The CPCAB Level 4 Diploma in Therapeutic Counselling is a progression programme that leads on from the CPCAB Level 3 Certificate in Counselling Studies. This programme is designed to provide you with the essential knowledge, skills and behaviours to work as a Therapeutic Counsellor in an agency context.

This programme focuses on practical development, applying your knowledge, skills and behaviours learned in seminars and through work-based learning, and has been developed to take account of the latest research findings on what makes counselling effective. This is underpinned by the CPCAB Model of Practitioner Development.

Modules Covered

- Working Ethically, Safely and Professionally as a Counsellor
- Working Within a Counselling Relationship
- Working with Client Diversity in Counselling Work
- Working Within a User-Centred Approach to Counselling
- Working with Self-Awareness in the Counselling Process
- Working Within a Coherent Framework of Counselling Theory and Skills
- Working Self-Reflectively as a Counsellor

Why Study With Us?

This programme is delivered by subject specialists who are qualified counsellors and actively involved in the field.

The qualification currently offers routes on to the following professional body registers accredited by the Professional Standards Authority (PSA):

- BACP – British Association of Counselling and Psychotherapy
- NCS – National Counselling Society
- COSCA – Counselling and Psychotherapy in Scotland
- ACC – Association of Christian Counsellors

Career Opportunities

This qualification is designed to lead to an employed or voluntary role in a counselling agency in both medical and non-medical settings.

Students with sufficient experience can also begin working as independent practitioners in private practice.

Entry Requirements

- CPCAB Level 3 Certificate in Counselling Studies*
- CPCAB Level 2 Certificate in Counselling Skills*
- GCSE grade C/4 or above in English and maths*

*Applications may be considered to those who hold equivalent qualifications.

COUNSELLING PRACTICE

Level 4 Diploma in Counselling Practice

 Delivered over two days or less

Location

North Notts College

Course Duration

2 years - Part-time

Apply online via

Our college websites

Awarding Body

AIM

Course Fee

£2,882 per year

Course Overview

The AIM awards Level 4 Diploma in Counselling is a progression programme that leads on from the Level 3 Certificate in Counselling Studies.

This two-year part-time programme is designed to provide you with the knowledge skills and behaviours to work as a Counsellor in a volunteer placement gaining a minimum of 100 hours.

This programme focuses on the development of your practical skills, qualities and theory knowledge that has been developed throughout levels 2 and 3 counselling certificates to take account of the latest research findings on what makes counselling effective.

Modules Covered

- Counselling Theory - Psychodynamic concepts and interventions
- Working with Anxiety
- Working with Depression
- Working with Trauma
- Working with Grief and Loss
- Working Within a Coherent Framework of Counselling Theory and Skills
- Working Self-Reflectively as a Counsellor - Supervised practise

Why Study With Us?

This programme will be delivered by subject specialists who are qualified counsellors and actively involved in the field.

Career Opportunities

The qualification currently offers routes on to the following professional body registers accredited by the Professional Standards Authority (PSA):

- BACP - British Association of Counselling and Psychotherapy
- NCS - National Counselling Society

You can also become a qualified and/or employed Counsellor and progress onto registration and accreditation with varying professional bodies.

Entry Requirements

- AIM Level 3 Certificate in Counselling Studies
- AIM Level 2 Certificate in Counselling Skills
- A good reference from previous tutors/ education provider
- GCSE grade C/4 or above in English and maths*

*Applications may be considered to those who hold equivalent qualifications.

EARLY CHILDHOOD STUDIES

Foundation Degree in Early Childhood Studies

 Delivered over two days or less

Location

North Notts College

Awarding Body

University of Hull

Course Duration

3 years - Part-time

Course Fee

£4,400 per year

Apply online via

Our college websites
UCAS Centre Code 'R52'

Course Overview

This course will provide an innovative response to specific sector needs for the professional development of Childminders, Pre-school Learning Leaders and Early Years Practitioners. It can also allow progression to study the BA (Hons) Early Childhood Studies (Top-up).

Modules Covered

Level 4

- Academic Study Skills
- Early Childhood Development
- Professional Reflective Practice: Listening to Young Children
- Safeguarding and Promoting the Well-being of Young Children
- Natural Play
- Social Inclusion and Early Childhood Education

Level 5

- Approaches to Research in Early Childhood Studies
- Inclusive Strategies for Children with SEND
- Professional Reflective Practice: Transitions
- Professional Reflective Practice: Critical Reflection and Alternative Pedagogies
- Action Research Project
- Professional Reflective Practice: Learning Journey

Why Study With Us?

We have an excellent reputation within the early years and childcare sectors. Our highly-skilled and experienced staff, and links with employers in this sector, will support you to achieve your full potential.

Career Opportunities

Upon successful completion of this course you could go into employment as a Nursery Manager, Pre-School Leader, Teaching Assistant, Early Years Practitioner or a Family Support Worker. You could also progress onto our Bachelor of Arts (Hons) Early Childhood Studies (Top-up) Degree.

Entry Requirements

- A relevant Level 3 qualification in Early Years with license to practice status
- GCSE maths and English at grade C/4 or above or equivalent
- Hold a current Enhanced DBS
- Be employed within the sector in a relevant setting and role
- ICT access and skills to support online learning elements of the programme
- All applicants who are non-native English speakers, or who have not studied the final two years of school in English, must have an IELTS score of 6.0 or above

EARLY CHILDHOOD STUDIES (TOP-UP)

Bachelor of Arts (Hons) in Early Childhood Studies (Top-up)

 Delivered over two days or less

Location

North Notts College

Awarding Body

University of Hull

Course Duration

18 months - Part-time

Course Fee

£3,450 per year

Apply online via

Our college websites
UCAS Centre Code 'R52'

Course Overview

This course is tasked to support students who are already practitioners to develop a wide range of skills and knowledge for employment. Students on this course will enjoy a creative and innovative approach to learning.

Modules Covered

Year 1

- Professional Practice Working with 0- 7 years
- International Perspectives in Education and Care
- Creativity in Early Childhood
- Leadership and Management

Year 2

- Dissertation (student choice of content centred on early childhood studies)

Why Study With Us?

We have an excellent reputation within the Early Years and Childcare Sector. Our highly skilled experienced staff team, and links with employers in the sector, will support you to achieve your full potential.

Career Opportunities

Upon successful completion of your course you could progress your studies toward the social care sector as a Family Support Worker or Counsellor, the care sector as a Child Psychotherapist, or be a Manager in the private, voluntary, health, maintained sector and more.

We recognise that you may wish to enter teaching or a similar profession on graduation. Throughout your degree you will develop skills, expertise and knowledge that will enable you to apply, with confidence for initial Teacher Training or a range of other professional education routes.

Entry Requirements

- A relevant Level 5 academic study qualification
- GCSE English and maths at grade C/4 or above or equivalent

PROFESSIONAL PRACTICE IN HEALTH AND SOCIAL CARE

 Delivered over two days or less

Foundation Degree (FdSc) in Professional Practice in Health and Social Care

Location

University Centre Rotherham
The Bridge Skills Hub
Dearne Valley College

Course Duration

2 years - Full-time

Course Fee

£6,900 per year

Apply online via

Our college websites
UCAS Centre Code 'R52'

UCAS Points

48

Awarding Body

Sheffield Hallam University

Course Overview

This is a specialist Foundation Degree designed for adults wanting to progress towards a professional degree within the health and social care sector.

It has been designed in response to the rapidly changing workforce demands and policy initiatives aimed at modernising services and improving quality, productivity and efficiency. It covers both the academic and work-based competencies that are relevant to a multitude of roles within health and social care settings.

Modules Covered

Year 1

- Work Based Learning 1: Academic and Practice
- Reflective and Personal Development Skills
- Essential Sciences for Person-centred Care
- Integrated Holistic Assessment and Delivery of Health and Social Care Interventions

Year 2

- Work Based Learning 2: Academic and Practice
- Using and Evaluating Evidence to Inform Practice
- Promoting Health, Wellbeing and Independence
- Leadership and Management

Why Study With Us?

After completion of Year 1 and a successful UCAS application, the course has been designed to enable you to step-off and start Year 1 of a professional degree programmes within health and social care practice, such as (but not limited to):

- Nursing (Adult, Child, Mental Health)
- Midwifery • Allied Health Professions
- Social Work

After completion of Year 2, a successful internal progression interview with Sheffield Hallam University and completion of additional work, the course has been designed to provide you with the opportunity to access specific professional degree programmes (with advanced entry to Year 2), of programmes such as:

- Nursing (Adult) – Year 2
- Allied Health Professions (Various) – Year 2
- Social Work – Year 2

In addition, you could progress onto Year 3 and complete a top-up year at Sheffield Hallam University, to achieve a BSc (Hons) Professional Practice in Health and Social Care.

Career Opportunities

Upon successful completion of this course (at Year 1 or Year 2) and further study, you can gain employment across a wide range of pathways including Nursing (Adult, Child, Mental Health), Midwifery, Allied Health Professions and Social Work.

In addition, this programme could help you obtain the higher level knowledge, skills and behaviours to enhance your professional development and gain employment in the wider sector including as a Care Worker, Senior Carer, Care Home Manager, Healthcare Assistant, Community Support and Outreach Worker.

Entry Requirements

- 48 UCAS Points (e.g. A-Levels, Access to HE Diploma, BTEC Level 3 Diploma/Extended Diploma)
- GCSE English and maths at grade C/4 and above (or equivalent)
- Applications may be considered to those who hold equivalent qualifications

FUTURE CAREERS IN CARING PROFESSIONS

This sector is ideal for those who are passionate about caring for others with sensitivity, can listen to and empower those they look after, and can react calmly and responsively, whatever the situation.

Types of roles available:

Nurse

Nurses provide general and/or specialised nursing care for the sick, injured and others in need of such care. Nurses also work with other healthcare professionals and within teams of healthcare workers.

Average salary

£29,000*

Day-to-day tasks**:

- Take temperatures, blood pressures and pulse rates
- Assist doctors with physical examinations
- Administer drugs and injections
- Clean and dress wounds
- Use medical equipment, set up drips and blood transfusions
- Monitor patients' progress
- Update patient records and handover information to colleagues at the end of a shift

Working environments

You could work in an NHS or private hospital, a health centre, a hospice, an adult care home, at a client's home or in a prison. Your working environment may be physically and emotionally demanding. You may need to wear a uniform.

Social Worker

Social Workers provide information, advice and support to those who are socially excluded or are experiencing crisis; they protect the welfare of vulnerable groups including children, young people, people with disabilities and elderly people.

Average salary

£33,800*

Day-to-day tasks**:

- Offer information and counselling
- Create support plans for clients, maintain records and write reports
- Support clients' safety and take the right action to protect them when necessary
- Work closely with communities, health professionals and other agencies
- Help clients to develop and maintain independent living skills
- Hold meetings and assessments with individuals and families to review their situation

Working environments

You could work in an office, in an NHS or private hospital, at an adult or children's care home, or in the community. Your working environment may be emotionally demanding.

In-demand skills

In-demand skills that commonly appear in job descriptions for roles within the caring professions sector include*:

Communication, Enthusiasm, Management, Compassion and Empathy.

*EMSI 2021 **nationalcareers.service.gov.uk

COMPUTING AND SYSTEMS DEVELOPMENT

Bachelor of Science (Hons) in Computing and Systems Development

Location

University Centre Rotherham

Awarding Body

University of Hull

Course Duration

3 years - Full-time
6 years - Part-time

Course Fee

£6,900 per year

Apply online via

Our college websites
UCAS Centre Code 'R52'

UCAS Points

64

Course Overview

This programme has been developed in order to enable you to engage with the exciting and dynamic challenges presented by the computing and systems development sector.

This is a contemporary, cutting edge programme aimed at students eager to follow a career in various job roles within the high-tech and ever changing world of computing and systems development.

Modules Covered

Year 1

- Academic Excellence • Networking Fundamentals
- Fundamentals of Programming • Website Design
- User Interface Design • Business Systems Modelling

Year 2

- Group Project • E-Commerce
- Business Application of Social Media
- Database Development

Networking pathway:

- System Security
- Computer Communications and Networks

Software Development pathway:

- Web Application Development
- Data Structures and Algorithms

General pathway:

- Computer Communications and Networks
- Data Structures and Algorithms

Year 3

- Dissertation • Professional Development
- Web Analytics

Networking pathway:

- Cyber Security • Cloud Computing Software

Development pathway:

- Intelligent Systems • Mobile App Development

General pathway:

- Intelligent Systems • Cloud Computing

Why Study With Us?

The teaching team are very experienced, approachable and supportive and are fully committed to helping you achieve to the best of your ability.

You'll learn in small study groups and will have access to modern hardware and industry-standard software in order to prepare you for your transition to employment.

Our connections will allow you to gain the latest skills and knowledge needed to be successful in the computing and systems development industry.

We also have a range of real-life projects that you will be invited to work on as part of your programme.

Career Opportunities

Upon successful completion of this course you could go into employment as a Website Designer, Software Engineer, Network Technician, Data Analyst, Internet Marketer or Programmer.

Entry Requirements

- A relevant Level 3 qualification

OR

- Two A Levels (or equivalent) in a related subject

OR

- 60 Access to HE credits (of which a minimum of 45 must be at Level 3) in a related subject
- GCSE maths and English at grade C/4 or equivalent
- Applicants who lack formal qualifications will be set a piece of work to assess their academic potential and relevant experience
- Applicants may also be admitted with credit for prior certified learning (APcL) or work/life experience or other uncertified learning (APeL)
- All applicants who are non-native English speakers, or who have not studied the final two years of school in English, must have an IELTS score of 6.0 or above
- All applicants will attend a one-week summer school

MEET OUR INDUSTRY EXPERIENCED TEACHING TEAM



“My main area of expertise lies within the field of computers with a particular interest in website design, user interface design, spreadsheet modelling and databases; all key areas which are embedded into the course modules.”

Lavin Osman
Lecturer in Computing

COMPUTING AND DIGITAL

GAMES DESIGN

Foundation Degree in Games Design

Location

University Centre Rotherham

Awarding Body

Sheffield Hallam University

Course Duration

2 years - Full-time

Course Fee

£6,900 per year

Apply online via

Our college websites
UCAS Centre Code 'R52'

UCAS Points

64

Course Overview

This course has been carefully designed in consultation with employers within the sector to ensure that the content represents the skills and knowledge you need to directly meet the needs of employers within games design.

The focus will be around the development of practical skills which can be applied directly to tasks which are contextualised and able to test your skills in the real world.

Modules Covered

Year 1

- Games Design Theory and Project
- 3D Environments for Computer Games
- Introduction to Games Mechanics
- Visual Concepts for Games
- 3D Modelling

Year 2

- 3D Character Modelling
- Advanced Gameplay Development
- Animation Techniques
- Group Game Design Project
- Human Computer Interfaces for Computer Games
- Sound Design for Games



"I receive so much support from everyone. UCR is close to home and I love that the smaller class sizes help our tutors dedicate more time to us."

Amy Spalding
Computing and Systems Development

Scan here to find out more about Amy's experience.

Why Study With Us?

Our staff have strong links with industry and the qualification has been designed with employers at the heart of its content. We use state-of-the-art equipment and industry-standard software.

We also have a range of real-life projects that you will be invited to work on as part of your programme.

Career Opportunities

Upon successful completion of this course you could go into employment as a Games Designer, Games Animator, Level Editor, Assistant Producer or Creative Director.

Alternatively, you can progress onto further education to top-up your degree.

Entry Requirements

- A relevant Level 3 qualification
- OR
- A minimum of two A Levels in a related subject
- OR
- 60 Access to HE credits (of which a minimum of 45 must be at Level 3) in a related subject
- GCSE maths and English at grade C/4 or equivalent
- Applicants who lack formal qualifications will be set a piece of work to assess their academic potential and relevant experience
- All applicants who are non-native English speakers, or who have not studied the final two years of school in English, must have an IELTS score of 6.0 or above
- All applicants will attend a one-week summer school

FUTURE CAREERS IN COMPUTING AND DIGITAL

The computing and digital sector is ideal for those who have a passion for keeping up-to-date with the latest trends in technology.

Types of roles available:

Website Designer

Website Designers create, develop and maintain websites to meet a client's specific requirements.

Day-to-day tasks:

- Take a lead role in maintaining and developing a website
- Attend meetings with clients to plan and develop site content, style and appearance
- Use web content management systems (CMS)
- Analyse website usage statistics, and write reports
- Carry out quality assurance checks on content
- Report technical problems to IT support staff

Working environments

You could work in an office, from home or at a client's business.

Average salary
£31,700*

Software Developer

Software Developers design, create, test, implement and maintain software systems to meet the specifications of businesses as well as designing and developing specialist software.

Day-to-day tasks:

- Discuss requirements with the client and the development team
- Take part in technical design and progress meetings
- Write or amend computer code
- Test software, carry out quality checks and diagnose and fix problems
- Keep accurate records of the development process, changes and results
- Maintain and support systems once they're up and running

Working environments

You could work in an office, from home or at a client's business.

Average salary
£44,000*

In-demand skills

In-demand skills that commonly appear in job descriptions for roles within the computing and digital sector include*:

Communication, Management, Problem Solving, Innovation and Customer Service.

*EMSI 2021 **nationalcareers.service.gov.uk



EDUCATION

EDUCATION AND PROFESSIONAL DEVELOPMENT (TOP-UP)

Bachelor of Arts (Hons) in Education and Professional Development (Top-up)

Location

University Centre Rotherham

Course Duration

2 years - Part-time

Apply online via

Our college websites

Awarding Body

University of Hull

Course Fee

£4,400 per year

Course Overview

This is a two-year, blended learning top-up programme involving attendance at monthly day schools with an expectation of independent study and support by individual tutorials with the module tutor. In addition to this, you will be supported in your studies with academic support from our libraries.

The programme's aim is to enhance your knowledge and skills in three broad areas; critical reflection, policy and practice and research and academic scholarship.

Not only will you be supported in your studies by the teaching team, you will receive help from our learning-centred staff in relation to academic and research skills.

As the course is validated by the University of Hull, all processes, from admissions through to assessment, are regularly reviewed to ensure that there is compliance with the University's academic regulations, equivalence in academic standards, appropriate staffing and resources are maintained and that there is a provision of a good quality Higher Education experience for all students on the programme.

Modules Covered

Year 1

- Personal and Professional Development
- Research and Academic Study Skills
- Creativity and Innovation in Practice
- Working in Teams

Year 2

- Dissertation
- Professional Reflective Review

Why Study With Us

We have an experienced teaching team who have a good reputation for ensuring you receive a quality teaching and learning experience. The achievement rate on this course is consistently very good with a large proportion of graduates gaining a high degree classification.

Career Opportunities

Upon successful completion of this course you could go into employment as a Programme Leader, Curriculum Leader, Curriculum Manager or as a Teaching and Learning Development Officer.

Entry Requirements

- A Level 5 teaching qualification (Certificate in Education or Diploma in Education & Training) or a Foundation Degree in a relevant subject area
- GCSE English and maths at grade C/4 or above or equivalent
- Two years full-time teaching, training, learning support or educational leadership experience, or part-time equivalent

CERTIFICATE IN EDUCATION: FULL-TIME

Certificate in Education (Lifelong Learning): Full-time

Location

University Centre Rotherham

Awarding Body

University of Huddersfield

Course Duration

1 year - Full-time

Course Fee

£7,600

Apply online via

Our college websites or UCAS

Course Overview

This one-year course is aimed at those who are not currently working within a teaching environment. The course will help you to develop your teaching skills, reflect on current ideas about education and training and creatively explore the professional opportunities open to you.

Modules Covered

- Research Informed Teaching, Learning and Assessment
- Becoming a Subject Specialist Tutor
- Being a Subject Specialist Tutor
- Policy and Professional Issues

Why Study With Us

We have an experienced teaching team who have a good reputation for ensuring you receive a quality teaching and learning experience.

Not only will you be supported in your studies by the teaching team, you will receive help from our learning-centred staff in relation to academic and research skills.

As the course is validated by the University of Huddersfield, all processes, from admissions through to assessment, are regularly reviewed to ensure that there is compliance with the University's academic regulations, equivalence in academic standards, appropriate staffing and resources are maintained and that there is a provision of a good quality Higher Education experience for all students on the programme.

The full-time and part-time Certificate in Education are subject to change in line with University of Huddersfield.

Career Opportunities

Upon successful completion of this course you could go into employment as a College Lecturer or Teacher, Curriculum Team Leader, a Teacher in Uniformed Services or in learning and development. You could also be a teacher with adult and community learning as well as charitable organisations.

Entry Requirements

No prior teaching experience is needed. The course is particularly suitable if you have work experience in industry, business and administration, hair and beauty, social work, health service, uniformed services or armed forces.

You must:

- Have a HNC, CGLI Advanced, NVQ Level 3/4 or recognised professional qualification
- Be able to demonstrate appropriate work experience in the area you wish to teach
- Be prepared to undertake a placement to gain a minimum of 250 hours at a recognised training or education establishment. Voluntary teaching/ training may be acceptable (please ask for more details)
- GCSE Maths and English at grade C/4 or above (applicants with Level 2 Functional Skills will be required to take an entrance test)
- Be able to communicate in standard spoken and written English

In addition, you must also:

- Complete a satisfactory interview
- Undertake an Enhanced Disclosure and Barring Service (DBS) check
- Provide two satisfactory references

CERTIFICATE IN EDUCATION: PART-TIME

Certificate in Education (Lifelong Learning): Part-time

Location

University Centre Rotherham

Awarding Body

University of Huddersfield

Course Duration

2 years - Part-time

Course Fee

£3,800 per year

Apply online via

Our college websites

Course Overview

This two-year course will help you to develop your teaching skills, reflect on current ideas about education and training and to creatively explore the professional opportunities open to you.

Much of the course is focused on practical teaching. You will gain experience of learning and teaching alongside other teachers and trainers, with support from your tutors.

Modules Covered

- Research Informed Teaching, Learning and Assessment
- Becoming a Subject Specialist Tutor
- Being a Subject Specialist Tutor
- Policy and Professional Issues

Why Study With Us

We have an experienced teaching team who have a good reputation for ensuring you receive a quality teaching and learning experience.

Not only will you be supported in your studies by the teaching team, you will receive help from our learning-centred staff in relation to academic and research skills.

As the course is validated by the University of Huddersfield, all processes, from admissions through to assessment, are regularly reviewed to ensure that there is compliance with the University's academic regulations, equivalence in academic standards, appropriate staffing and resources are maintained and that there is a provision of a good quality Higher Education experience for all students on the programme.

The full-time and part-time Certificate in Education are subject to change in line with University of Huddersfield.

Career Opportunities

Upon successful completion of this course you could go into employment as a College Lecturer or Teacher, Curriculum Team Leader, a Teacher in Uniformed Services or in learning and development. You could also be a teacher with adult and community learning as well as charitable organisations.

Entry Requirements

No prior teaching experience is needed, however the course is particularly suitable if you have work experience in industry, business and administration, hair and beauty, social work, health service, uniformed services or armed forces.

You must:

- Have a HNC, CGLI Advanced, NVQ level 3/4 or recognised professional qualification
- Be able to demonstrate appropriate work experience in the area you wish to teach
- Be prepared to undertake a placement to gain a minimum of 250 hours at a recognised training or education establishment. Voluntary teaching/ training may be acceptable (please ask for more details)
- GCSE Maths and English at grade C/4 or above (applicants with Level 2 Functional Skills will be required to take an entrance test)
- Be able to communicate in standard spoken and written English

In addition, you must also:

- Complete a satisfactory interview
- Undertake an Enhanced Disclosure and Barring Service (DBS) check
- Provide two satisfactory references

LEARNING SUPPORT

Foundation Degree in Learning Support

Location

University Centre Rotherham

Awarding Body

University of Hull

Course Duration

3 years - Part-time

Course Fee

£4,400 per year

Apply online via

Our college websites

Course Overview

The Foundation Degree is a vocational programme for those who are involved in learning support as a Teaching Assistant, Classroom Assistant, Learning Mentor or Volunteer in a learning support setting.

All modules are closely related to the work of learning support workers

Modules Covered

- Study Skills for Higher Education
- Supporting and Enhancing Learning
- Social Contexts of Learning
- Digital Technologies for Learning
- Working with Professionals and Families
- Managing Behaviour
- Communication, Language and Literacy
- Safeguarding
- Research Methods
- Inclusivity
- Project Module

Why Study With Us

This is a well-established and popular course with a high achievement rate. The teaching team offers all their students a high level of support and guidance. There is one-to-one support available when needed and studying with us allows you to continue working in your local placement.

As the course is validated by the University of Hull, all processes, from admissions through to assessment, are regularly reviewed to ensure that there is compliance with the University's academic regulations, equivalence in academic standards, appropriate staffing and resources are maintained and that there is a provision of a good quality Higher Education experience for all students on the programme.

Career Opportunities

The course can enhance employment prospects and provides the first step towards a full degree via a top-up route. It is possible to progress from the Foundation Degree in Learning Support to Qualified Teacher Status (QTS) at primary level or onto the BA (Hons) Education and Professional Development top-up programme, available at University Centre Rotherham.

Entry Requirements

You should be in a paid or voluntary learning support position at a recognised training or education establishment for at least two days per week

- Basic IT skills
- A good level of English

PgCE/PGCE: FULL-TIME

Professional Graduate Certificate in Education (PgCE - Lifelong Learning): Full-time Postgraduate Certificate in Education (PGCE - Lifelong Learning): Full-time

Location

University Centre Rotherham

Awarding Body

University of Huddersfield

Course Duration

1 year - Full-time

Course Fee

£7,600

Apply online via

Our college websites or via The Department for Education website

Course Overview

This one-year course is aimed at those who are not currently employed within a teaching environment. The course will help you to develop your teaching skills, reflect on current ideas about education and training and creatively explore the professional opportunities open to you.

Much of the course is focused on practical teaching. You will gain experience of learning and teaching alongside other teachers and trainers, with support from your tutors. You will develop key skills needed to be teaching in the education, training and skills sector.

Modules Covered

- Research Informed Teaching, Learning and Assessment
- Becoming a Subject Specialist Tutor
- Being a Subject Specialist Tutor
- Policy and Professional Issues

Why Study With Us

We have an experienced teaching team who have a good reputation for ensuring you receive a quality teaching and learning experience.

Not only will you be supported in your studies by the teaching team, you will receive help from our learning-centred staff in relation to academic and research skills.

As the course is validated by the University of Huddersfield, all processes, from admissions through to assessment, are regularly reviewed to ensure that there is compliance with the University's academic regulations, equivalence in academic standards, appropriate staffing and resources are maintained and that there is a provision of a good quality Higher Education experience for all students on the programme.

Career Opportunities

Upon successful completion of this course you could go into employment as a College Lecturer or Teacher, a Secondary School Teacher, Curriculum Team Leader, a Teacher in Uniformed Services or in learning and development. You could also be a teacher with adult and community learning, as well as charitable organisations.

Entry Requirements

You must:

- Have a minimum of a UK Bachelor's Degree, or equivalent
- Be able to demonstrate appropriate work experience in the area you wish to teach
- Be prepared to undertake a placement to gain a minimum of 250 hours at a recognised training or education establishment. Voluntary teaching/training may be acceptable (please ask for more details)
- GCSE Maths and English at grade C/4 or above (applicants with Level 2 Functional Skills will be required to take an entrance test)
- Be able to communicate in standard spoken and written English

In addition, you must also:

- Complete a satisfactory interview
- Undertake an Enhanced Disclosure and Barring Service (DBS) check
- Provide two satisfactory references

The full-time and part-time PGCE is subject to change in line with University of Huddersfield.

PgCE/PGCE - PART-TIME

Professional Graduate Certificate in Education (PgCE - Lifelong Learning): Part-time
Postgraduate Certificate in Education (PGCE - Lifelong Learning): Part-time

Location

University Centre Rotherham

Course Duration

2 years - Part-time

Apply online via

Our college websites

Awarding Body

University of Huddersfield

Course Fee

£3,800 per year

Course Overview

This two-year course will help you to develop your teaching skills, reflect on current ideas about education and training and creatively explore the professional opportunities open to you.

Much of the course is focused on practical teaching. You will gain experience of learning and teaching alongside other teachers and trainers, with support from your tutors.

Modules Covered

- Research Informed Teaching, Learning and Assessment
- Becoming a Subject Specialist Tutor
- Being a Subject Specialist Tutor
- Policy and Professional Issues

Why Study With Us

We have an experienced teaching team who have a good reputation for ensuring you receive a quality teaching and learning experience.

Not only will you be supported in your studies by the teaching team, you will receive help from our learning-centred staff in relation to academic and research skills.

As the course is validated by the University of Huddersfield, all processes, from admissions through to assessment, are regularly reviewed to ensure that there is compliance with the University's academic regulations, equivalence in academic standards, appropriate staffing and resources are maintained and that there is a provision of a good quality Higher Education experience for all students on the programme.

The full-time and part-time PGCE is subject to change in line with University of Huddersfield.

Career Opportunities

Upon successful completion of this course you could go into employment as a College Lecturer or Teacher, a Secondary School Teacher, Curriculum Team Leader, a Teacher in Uniformed Services or in learning and development. You could also be a teacher with adult and community learning as well as charitable organisations.

Entry Requirements

You should normally be in employment as a teacher or trainer at a recognised training or educational establishment. The course is particularly suitable if you have work experience and/or qualifications in industry, including business and administration, hair and beauty, health and social care, uniformed services or armed forces, construction, engineering and many other vocational areas.

Entry requirements for this course are normally:

- Have a minimum of a UK Bachelor's Degree, or equivalent
- Be in paid employment as a teacher or trainer for a minimum of 250 hours, over the two-year programme, at a recognised training or education establishment. Voluntary teaching/training may be acceptable
- GCSE Maths and English (applicants with Level 2 Functional Skills will be required to take an entrance test)
- Be able to communicate in standard spoken and written English

In addition, you must also:

- Provide confirmation of an Enhanced Disclosure and Barring Service (DBS) check
- Provide one satisfactory reference
- Complete a satisfactory interview
- Identify a work-based mentor who can support you in your subject specialism

EDUCATION AND PROFESSIONAL DEVELOPMENT

Master of Arts (MA) in Education and Professional Development

Location

University Centre Rotherham

Course Duration

2 years - Part-time

Apply online via

Our college websites

Awarding Body

University of Hull

Course Fee

£3,450 per year

Course Overview

The programme has been designed to further enhance the knowledge and skills of educational practitioners in three broad areas: critical reflection; policy and practice; and research and academic scholarship. It is an academically rigorous programme underpinned by commitment to professional development which draws upon a range of differing perspectives, academic disciplines and sustainable practices applied to the practitioner's context. The purpose of the programme is to develop reflexive practitioners who shape and influence policy and its implementation within a changing professional context, whilst responding to the needs of learners, employers and organisations.

The blended learning model will allow for some flexibility in the modes of study additional support to students through personal and academic tutorials, group seminars, IT and library facilities.

Modules Covered

Year 1

- Action Research in Education
- Education in a Digital Society
- Critical Issues in Education

Year 2

- Mentoring and Coaching for Educational Professionals
- Research Project

Why Study With Us

This course is designed for those who are already in practice in an educational setting, this may be as a classroom-based Practitioner, Programme Leader or Manager; this could include voluntary roles.

Career Opportunities

This programme is intended to support professional and personal development and prepare graduates for new roles with greater responsibility, or support them in new teaching areas (such as Higher Education), or lead to improved teaching and learning skills to then have an impact on their own learners.

Entry Requirements

- A recognised Honours Degree (first or second class) in an appropriate subject. Relevant APL will be considered
- Applicants are required to be working (paid or voluntary) in an educational organisation

FUTURE CAREERS IN EDUCATION

The education sector is ideal for those who have a passion for inspiring others and helping people reach their full potential.

Types of roles available:

Further Education Lecturer

Further Education Lecturers supervise and teach trade and technical education to students beyond secondary education and for adults and commercial training.

Average salary

£33,700*

Day-to-day tasks**:

- Plan, prepare and teach classes and workshops for students
- Use e-learning technology to deliver lessons
- Work with learning support staff to give students with special educational needs or disabilities extra help
- Check and mark work and give feedback
- Help and motivate students facing barriers to learning and make sure that all students work well together
- Make referrals to other professionals e.g. mentors, personal tutors, careers advisers and counsellors
- Meet with subject colleagues and other staff to plan and review work and share good practice
- Plan and take part in events like open days or recruitment activities

Working environments

You could work in a sixth form college, an independent training centre, at a college or in a prison.

Training Officer

Training Officers plan and run courses and workshops for staff within organisations.

Average salary

£25,000**

Day-to-day tasks**:

- Assess individual and organisational training needs
- Conduct staff appraisals and meetings with managers
- Design engaging, appropriate, and inclusive learning activities
- Deliver training using online, blended or classroom based methods
- Assess individuals and the effectiveness of training programmes
- Monitor trainees' progress
- Make sure training is cost-effective and within budget

In-demand skills

In-demand skills that commonly appear in job descriptions for roles within the education sector include*:

Teaching, Enthusiasm, Communication, Management and Leadership.

ELECTRICAL AND ELECTRONIC ENGINEERING

Higher National Certificate - Diploma Level 4 in Electrical and Electronic Engineering
Higher National Diploma - Diploma Level 5 in Electrical and Electronic Engineering

 Delivered over two days or less

Location

University Centre Rotherham
Rotherham College

Course Duration

Level 4 - 2 years - Part-time
Level 5 - 1 year - Part-time

Apply online via

Our college websites
UCAS Centre Code 'R52'

Awarding Body

Pearson BTEC

Course Fee

£7,500 per year

Course Overview

These courses are designed to provide you with a thorough understanding of the electrical and electronic technologies which are used by businesses nationally and globally.

By studying the theory behind these technologies, you will develop knowledge of how electrical and electronic engineering systems feature in everyday life.

This course provides advanced technical knowledge through electrical and electronic engineering principles, concepts and theory. It also provides the higher-level technical vocational electrical and electronic engineering skills to prepare you for a range of related occupations.

The HNC course is offered on a part-time basis over three semesters (18 months) and can be topped up to a HND qualification with further study.

Modules Covered

Level 4 HNC

- Engineering Maths
- Engineering Science
- Materials, Properties and Testing
- Electrical and Electronic Principles
- Automation, Robotics and PLCs
- Renewable Energy
- Managing a Professional Engineering Project
- Engineering Design

Level 5 HND

- Further Maths
- Industrial Power, Electronics and Storage
- Lean Manufacturing and Virtual Engineering
- Professional Engineering Project
- Industrial Systems
- Research Project

Why Study With Us?

We continually invest in modern, state-of-the-art equipment including new mechatronics and Programmable Logic Controller (PLC) facilities.

With industry-experienced tutors, the course is designed to equip you with the skill set desired by employers within the electrical engineering industry and provide you with new opportunities for career development.

Career Opportunities

Upon successful completion of this course you could go into employment as an electrical engineer, another engineering-related occupation or progress onto an engineering degree.

Completing these higher-level courses will also enhance your career opportunities and help meet aspirations for career progression to supervisor or managerial level roles.

Entry Requirements

Level 4 HNC entry requirements:

- A relevant Level 3 qualification

Level 5 HND entry requirements:

- The HND is a one year top-up from the HNC Electrical and Electronic Engineering. The units gained on your HNC must be transferable to suit the HND matrix

Engineering Higher/Degree Apprenticeships

We also offer a Level 4 Engineering Manufacturing Technician Apprenticeship where you can combine hands-on learning with studying on-site at University Centre Rotherham.

For more information, contact our Apprenticeship Team on: 01709 513147 or email enquiries@rnngroup.ac.uk



MEET OUR INDUSTRY EXPERIENCED TEACHING TEAM

"I was a Test Engineer for Celestica, working with a number of companies including Hewlett Packard, Dell, Sun Microsystems, BAE and ITT corporation. I worked with technicians to repair test machines and debug failing circuit boards. This experience helps me to explain how international companies work and how electronics are manufactured and tested, which I can share with students."

Andrew Jordan
Curriculum Team Leader in Engineering

ENGINEERING

GENERAL ENGINEERING

Higher National Certificate - Diploma Level 4 in General Engineering
Higher National Diploma - Diploma Level 5 in General Engineering

Location

University Centre Rotherham
Rotherham College

Awarding Body

Pearson BTEC

Course Duration

Level 4 - 1 year - Full-time
Level 5 - 1 year - Full-time

Course Fee

£7,500 per year

Apply online via

Our college websites
UCAS Centre Code 'R52'

UCAS Points

64

Course Overview

These courses are designed to provide you with a thorough understanding of engineering technologies used by businesses nationally and globally.

By studying the theory behind these technologies, you will develop knowledge of how engineering systems feature in everyday life.

These courses provide advanced technical knowledge through general engineering principles, concepts and theory.

You will study higher-level technical vocational engineering skills to prepare you for a range of related occupations. The HNC course can be topped up to an HND qualification with further study.

Modules Covered

Level 4 HNC

- Engineering Maths
- Engineering Science
- Materials, Properties and Testing
- Mechanical Principles
- Electrical and Electronic Principles
- Renewable Energy
- Managing a Professional Engineering Project
- Engineering Design

Level 5 HND

- Further Maths
- Lean Manufacturing
- Professional Engineering Project
- Industrial Systems
- Advanced Manufacturing Principles and Virtual Engineering
- Research Project

Why Study With Us?

We continually invest in new equipment and facilities, including mechatronics, Programmable Logic Controller (PLC) facilities, and metallurgy and science laboratories.

With industry-experienced tutors, the BTEC HNC and HND in General Engineering courses are designed to equip you with the skill set desired by employers within the engineering industry and provide you with new opportunities for career development.

Career Opportunities

Upon successful completion of these courses you could go into employment as an Engineer in many different settings or progress onto further study.

Completing these higher-level courses will also enhance your career opportunities and help meet aspirations for career progression to supervisor or managerial level roles.

Entry Requirements

Level 4 HNC entry requirements:

- A relevant Level 3 qualification

Level 5 HND entry requirements:

- The HND is a one year top-up from the HNC General Engineering. The units gained on your HNC must be transferable to suit the HND matrix

MECHANICAL ENGINEERING

Higher National Certificate - Diploma Level 4 in Mechanical Engineering
Higher National Diploma - Diploma Level 5 in Mechanical Engineering



Delivered over two days or less

Location

University Centre Rotherham
Rotherham College

Awarding Body

Pearson BTEC

Course Duration

Level 4 - 2 years - Part-time
Level 5 - 1 year - Part-time

Course Fee

£7,500 per year

Apply online via

Our college websites
UCAS Centre Code 'R52'

Course Overview

These courses are designed to provide you with a thorough understanding of engineering technologies used by businesses nationally and globally.

By studying the theory behind these technologies, you will develop the knowledge of how mechanical engineering systems feature in everyday life.

You will study higher-level technical vocational mechanical engineering skills to prepare you for a range of related occupations. The HNC course is offered on a part-time basis over three semesters (18 months) and can be topped up to an HND qualification with further study.

Modules Covered

Level 4 HNC

- Engineering Maths
- Engineering Science
- Materials, Properties and Testing
- Mechanical Principles
- Fundamentals of Thermodynamics and Heat
- Machining and Processing of Engineering Materials
- Managing a Professional Engineering Project
- Engineering Design

Level 5 HND

- Further Maths
- Advanced Mechanical Principles
- Lean Manufacturing
- Professional Engineering Project
- Virtual Engineering
- Advanced Manufacturing Technology
- Research Project

Why Study With Us?

We continually invest in modern, state-of-the-art equipment including new mechatronics and Programmable Logic Controller (PLC) facilities.

With industry-experienced tutors, the BTEC HNC and HND in Mechanical Engineering are designed to equip you with the skill set desired by employers within the mechanical engineering industry and provide you with new opportunities for career development.

Career Opportunities

Upon successful completion of this course you could go into employment as a Mechanical Engineer, another engineering-related occupation or progress onto further study.

You could also enhance your career opportunities and progression to supervisor or managerial level roles.

Entry Requirements

Level 4 HNC entry requirements:

- A relevant Level 3 qualification

Level 5 HND entry requirements:

- The HND is a one year top-up from the HNC Mechanical Engineering. The units gained on your HNC must be transferable to suit the HND matrix



"I am learning new skills everyday which are transferable to the workplace, giving me a step up in my future career."

Dillon Bunclark
Mechanical Engineering

Scan here to find out more about Dillon's experience.

FUTURE CAREERS IN ENGINEERING

The Engineering sector is ideal for those who are innovative and aim for a high quality assurance.

Types of roles available:

Mechanical Engineer

Mechanical Engineers undertake research and design, direct the manufacture and manage the operation and maintenance of engines, machines, aircraft, vehicle, building services and other mechanical items.

Average salary

£42,400*

Day-to-day tasks:

- Turn research ideas into technical plans, using computer aided design/modelling (CAD/CAM)
- Carry out surveys of mechanical systems and equipment
- Research and assess new products and innovations
- Present design plans and data to managers and clients
- Oversee maintenance programmes and quality control
- Manage and lead a project team of technicians, designers and other engineering professionals

Working environments

You could work in an office, in a factory or visit sites. Your working environment may be outdoors in all weathers.

Electrical Engineer

Electrical Engineers undertake research and design, direct construction and manage the operation and maintenance of electrical equipment, power stations, building control systems and other electrical products and systems.

Average salary

£52,500*

Day-to-day tasks:

- Carry out feasibility studies for new technical developments
- Draw up project plans and circuit diagrams using computer-assisted engineering and design software
- Estimate costs and project timings
- Coordinate the work of technicians and craftspeople
- Test installations and systems, and analyse test data
- Make sure projects meet safety regulations

Working environments

You could work in a factory, at a power station, in a workshop, at a research facility or in an office.

In-demand skills

In-demand skills that commonly appear in job descriptions for roles within the engineering sector include*:

Communication, Management, Planning, Innovation and Problem Solving.

“The facilities are really modern and create a nice environment to learn. My company supported me to study here; they always use UCR to upskill their apprentices. The teachers are great and really supportive.”

Joseph Wilcock

Electrical and Electronic Engineering



Scan here to find out more about Joseph's experience.

THEATRICAL HAIR AND MEDIA MAKE-UP

Foundation Degree in Theatrical Hair and Media Make-up



Delivered over two days or less

Location

University Centre Rotherham
Rotherham College

Course Duration

1 year - Full-time (per level)

Apply online via

Our college websites
UCAS Centre Code 'R52'

Awarding Body

University of Hull

Course Fee

£6,900 per year

Course Overview

This course delivers a higher level of study for those who are looking for a career within the field of specialist make-up. You will gain the technical skills needed to work within specialised media make-up at an advanced level. Throughout your time on the course you will perform a variety of hair, make-up and character styles on your peers, models and actors. You will also develop a portfolio to showcase your professional skills.

We are involved within the industry and as well as your study programme you will also gain experience enabling you to enhance your CV and work with employers within theatre, the NHS and performing arts companies.

We also provide workshops, masterclasses and guest speakers to come in and work alongside you – giving you current insights into the modern workplace.

You will be encouraged to take an experimental approach to application, materials and creative development processes to produce innovative and contemporary design work. This includes make-up and hair styling for fashion editorial, wig work for theatre, TV, and alternative design contexts (eg, catwalk). You will be trained in photography to assist with your personal work.

Modules Covered

Year 1 - Level 4

- Creative Postiche
- Current Trends in Film Hair and Media Make-up
- Mask Design and Construction
- Photographic Materials, Techniques and Processes
- Understanding the Industry of Media Hair and Make-up
- Personal and Professional Development

Year 2 - Level 5

- Casualty Simulation
- Costume Design
- Work-based Experience
- Special FX Prosthetics with Character Make-up
- TV and Film Hair and Media Make-up
- Wig Making and Design

Why Study With Us?

You will have many opportunities to take part in commercial work, creating characters on theatre productions, designing high-end fashion make-up for fashion shows and working with medical professionals to create casualty effects. Former students have taken part in Europe's largest disaster simulation in London.

You will have access to state-of-the-art facilities, equipment and professional products from companies such as Illamasqua, Mistair and Kryolan.

You will study in well-equipped studios and workshops, ranging from make-up, hair and special effects studios, to photography studios, IT suites, as well as access to a comprehensive Virtual Learning Environment (VLE). You will be taught by a team with strong reputations as practicing professional designers or researchers, as well as visiting lecturers, a dynamic programme of industry speakers, and international visits.

Our close links with industry will allow you to have the opportunity to work on a range of live project briefs with many organisations.

Career Opportunities

Upon successful completion of these courses you could go into the TV and film industry, theatre, make-up consultancy or self-employment.

Entry Requirements

- A relevant Level 3 qualification
- GCSE maths and English at grade C/4 or above or equivalent
- Successful interview with a course tutor
- You must be flexible and able to commit to evening and weekend activities on location
- You will be expected to purchase a uniform and kit and pay for educational visits

HAIR AND BEAUTY

SPECIALIST MAKE-UP

Higher National Certificate - Diploma Level 4 in Specialist Make-up
Higher National Diploma - Diploma Level 5 in Specialist Make-up

 Delivered over two days or less

Location

Retford Campus

Awarding Body

Pearson BTEC

Course Duration

1 year - Full-time (per level)

Course Fee

£6,900 per year

Apply online via

Our college websites
UCAS Centre Code 'R52'

Course Overview

This course delivers a higher level of study for those who are looking for a career within the field of specialist make-up.

Throughout your time on the course you will practice a variety of hair, wig applications, make-up and character styles on your peers, models and actors. You will also develop a portfolio to showcase your professional skills.

Through participation and networking with local employers, your communication skills and knowledge of business needs will develop and will support you with the work experience needed throughout your career.

Modules Covered

Year 1 - Level 4

- The Performing Arts Industry
- Professional Development
- Investigation of a Specialism
- Special FX
- Hair and Make-up Application
- Fashion and Fashion Editorial Hair and Make-up
- Period Hair and Make-up
- Hair and Make-up Design

Year 2 - Level 5

- Preparation, Process and Production in Creative Arts
- Management and Freelance Skills
- Design Techniques and Applications for the Performer
- Historical Context in Performing Arts
- Personal and Professional Development
- Project Design, Implementation and Evaluation
- Work-based Learning
- Period Hair and Make-up
- TV and Film Hair and Make-up

Why Study With Us?

You will have many opportunities to take part in commercial work, creating characters on theatre productions, designing high-end fashion make-up for fashion shows and working with medical professionals to create casualty effects. Former students have taken part in Europe's largest disaster simulation in London.

You will have access to state-of-the-art facilities, equipment and professional products from companies such as Illamasqua, Mistair and Kryolan.

You will be taught by a team with strong reputations as practicing professional designers or researchers, as well as visiting lecturers, a dynamic programme of industry speakers, and international visits.

Our close links with industry will allow you to have the opportunity to work on a range of live project briefs.

Career Opportunities

Upon successful completion of these courses you could go into the TV and film industry, theatre, make-up consultancy or self-employment.

Entry Requirements

- A relevant Level 3 qualification
- GCSE English and maths at grade C/4 or above or equivalent
- Successful interview with a course tutor
- You must be flexible and able to commit to evening and weekend activities on location
- You will be expected to purchase a uniform and kit and pay for educational visits



MEET OUR INDUSTRY EXPERIENCED TEACHING TEAM

"I work freelance within this industry, keeping my skills current and up-to-date to teach my students. I am a World Skills UK Ambassador, which means I open doors for students to compete at an extremely high standard."

Katie Asgari
Curriculum Team Leader in Theatrical Hair and Media Make-up

THEATRICAL HAIR AND MEDIA MAKE-UP (TOP-UP)

Bachelor of Arts (Hons) Theatrical Hair and Media Make-up (Top-up)

 Delivered over two days or less

Location

University Centre Rotherham
Rotherham College

Awarding Body

University of Hull

Course Duration

1 year - Full-time

Course Fee

£6,900 per year

Apply online via

Our college websites
UCAS Centre Code 'R52'

Course Overview

This course delivers a higher level of study for those who are looking for a career within the field of specialist make-up. You will gain the technical skills needed to work within specialised media make-up at an advanced level. Throughout your time on the course you will perform a variety of hair, make-up and character styles on your peers, models and actors. You will also develop a portfolio to showcase your professional skills.

We are involved within the industry and as well as your study programme you will also gain experience enabling you to enhance your CV and work with employers within theatre, the NHS and performing arts companies.

We also provide workshops, masterclasses and guest speakers to come in and work alongside you - giving you current insights into the modern workplace.

You will be encouraged to take an experimental approach to application, materials and creative development processes to produce innovative and contemporary design work. This includes make-up and hair styling for fashion editorial, wig work for theatre, TV, and alternative design contexts (eg, catwalk). You will be trained in photography to assist with your personal work.

Modules Covered

- Dissertation
- Fantasy Character Design Creation
- Managing the Creation of a Showcase
- Period and Historical Design Techniques
- Production Management

Why Study With Us?

You will have many opportunities to take part in commercial work, creating characters on theatre productions, designing high-end fashion make-up for fashion shows and working with medical professionals to create casualty effects. Former students have taken part in Europe's largest disaster simulation in London.

You will have access to state-of-the-art facilities, equipment and professional products from companies such as Illamasqua, Mistair and Kryolan.

You will study in well-equipped studios and workshops, ranging from make-up, hair and special effects studios, to photography studios, IT suites, as well as access to a comprehensive Virtual Learning Environment (VLE). You will be taught by a team with strong reputations as practicing professional designers or researchers, as well as visiting lecturers, a dynamic programme of industry speakers, and international visits.

Our close links with industry will allow you to have the opportunity to work on a range of live project briefs with many organisations.

Career Opportunities

Upon successful completion of this course you could go into the TV and film industry, theatre, make-up consultancy or self-employment.

Entry Requirements

- A relevant Level 4/5 qualification
- GCSE English and maths at grade C/4 or above or equivalent
- Successful interview with a course tutor
- You must be flexible and able to commit to evening and weekend activities on location

DERMAPLANING

Level 4 in Dermaplaning

 Delivered over two days or less

Location

Rotherham College

Awarding Body

VTCT

Course Duration

1 year - Part-time

Course Fee

£250 per year

Apply online via

[Our college websites](#)

Course Overview

This course delivers and develops the learners' knowledge, understanding and practical skills when using dermaplaning techniques to enhance appearance.

It covers the skills involved in providing a thorough consultation to establish client suitability for treatment and the knowledge on how to formulate a specific treatment plan tailored to suit individual client needs.

Learners will also develop the knowledge required to provide pre and post-treatment advice and post care to ensure the client receives the full benefit of the treatment.

Modules Covered

- Enhance Appearance using dermaplaning Techniques

Why Study With Us?

Well-equipped salons in a town centre campus with easy access to transport networks. Highly qualified staff with a vast amount of experience within the industry and education.

Career Opportunities

- Employment opportunities within skin clinics offering advanced beauty therapy treatments.
- Progression on to other level 4/5 courses including aesthetic treatments.
- Self employed
- Mobile

Entry Requirements

- Level 3 Beauty Therapy qualification
- You will be expected to purchase a uniform and kit

LASER AND LIGHT

Level 4 Laser and Intense Pulsed Light (IPL) Treatments

 Delivered over two days or less

Location

Rotherham College

Awarding Body

VTCT

Course Duration

1 year - Full-time

Course Fee

Please see website

Apply online via

[Our college websites](#)

Course Overview

This course is for those who wish to pursue a career as an employed and/or self-employed beauty therapist specialising in advanced skin treatments.

You will be taught by experienced industry professionals and gain hands-on practical experience in our commercial on-site salons.

Your course assessments will include practical assessments as well as assignments and online exams.

Modules Covered

- Provide electrical epilation
- Advanced epilation techniques
- Laser and light treatments for hair removal
- Laser and light treatments for skin rejuvenation
- Management of health, safety and security in the salon
- Physiology of ageing
- Quality management of client care in the hair and beauty sector

Why Study With Us?

Learn from industry-experienced and well-qualified tutors who have many years of industry experience, and continue to work in the sector. Staff possess specialist qualifications and knowledge which they bring to their teaching

Gain practical skills within our commercial and training beauty salons, and benefit from our links with local beauty salons and employers. You will have the opportunity to take part in enrichment activities, including additional industry skills sessions and cross-college events.

Career Opportunities

After completing this course, you could progress to our Level 4 Skin Needling or Level 4 Skin Peeling qualifications.

Or you could go on to work as a Beauty Therapist in a range of settings including:

- Commercial salons
- Independent/self-employed/mobile /home-based settings
- Cruise liners
- Hospitals

Entry Requirements

- Level 3 qualification or equivalent in Beauty Therapy
- GCSE English at grade C/4 or above
- Successful interview with a course tutor
- You will be expected to purchase a uniform and kit and pay for educational visits

MICROBLADING

Level 4 in Enhancing Eyebrows using Microblading Techniques



Delivered over two days or less

Location

Rotherham College

Course Duration

1 year - Full-time

Apply online via

Our college websites

Awarding Body

VTCT

Course Fee

£941 per year

Course Overview

This qualification is based on attaining professional competence within the discipline of microblading and includes the required elements to work effectively as a microblading technician.

The qualification will prepare learners for employment in skin clinics offering advanced treatments.

Modules Covered

- Client care and consultation
- Enhance appearance using microblading techniques
- Anatomy and Physiology for microblading techniques
- Eyebrow shaping services
- Health and safety in the salon

Why Study With Us?

Well-equipped salons in a town centre campus with easy access to transport networks. Highly qualified staff with a vast amount of experience within the industry and education.

Career Opportunities

- Employment opportunities within skin clinics offering advanced beauty therapy treatments.
- Progression on to other level 4/5 courses including aesthetic treatments.
- Employment in brow bars
- Self employed

Entry Requirements

- Level 3 Beauty Therapy qualification
- You will be expected to purchase a uniform and kit

“The staff are very professional, friendly and approachable. It is close to home, making studying a degree easily accessible in my local area. I’m gaining lots of practical experience and have the opportunity to obtain knowledge and skills within the industry.”

Kelly Birkin

Theatrical Hair and Media Make-up



Scan here to find out more about Kelly's experience.

SKIN NEEDLING

Level 4 in Skin Needling

 Delivered over two days or less

Location

Rotherham College

Awarding Body

ITEC

Course Duration

1 year - Part-time

Course Fee

Please see website

Apply online via

[Our college websites](#)

Course Overview

Throughout this qualification, learners will develop their knowledge and understanding of relevant anatomy and physiology and health and safety pertaining to level 4 non-medical aesthetic therapies.

They will also develop the knowledge, understanding and skills to consult with and analyse clients whilst providing skin needling treatments

Modules Covered

- Principles and practice of non-medical aesthetic therapies
- Advanced consultation for non-medical aesthetic therapies
- Advanced skin care for non-medical aesthetic therapies
- Provide cosmetic skin needling treatments

Why Study With Us?

Well-equipped salons in a town centre campus with easy access to transport networks. Highly qualified staff with a vast amount of experience within the industry and education.

Career Opportunities

- Employment opportunities within skin clinics offering advanced beauty therapy treatments
- Progression on to other level 4/5 courses including aesthetic treatments
- Self employed
- Mobile

Entry Requirements

- Level 3 Beauty Therapy qualification
- You will be expected to purchase a uniform and kit

SKIN PEELING

Level 4 in Skin Peeling

 Delivered over two days or less

Location

Rotherham College

Awarding Body

ITEC

Course Duration

1 year - Part-time

Course Fee

Please see website

Apply online via

[Our college websites](#)

Course Overview

This qualification is an advanced therapy qualification aimed at level 3 practitioners aged 18 and over.

Throughout the qualification learners will develop knowledge, understanding and practical skills using skin peel products and techniques to rejuvenate the condition of the skin. They will prepare and apply a range of skin peels as well as providing relevant pre and post care advice.

Modules Covered

- Provide skin peeling treatments

Why Study With Us?

Well-equipped salons in a town centre campus with easy access to transport networks. Highly qualified staff with a vast amount of experience within the industry and education.

Career Opportunities

- Employment opportunities within skin clinics offering advanced beauty therapy treatments
- Progression on to other level 4/5 courses including aesthetic treatments
- Employment on skin care counters
- Self employed

Entry Requirements

- Level 3 Beauty Therapy qualification
- You will be expected to purchase a uniform and kit

FUTURE CAREERS IN HAIR AND BEAUTY

The hair and beauty sector is ideal for those who are interested in advising others with styling and have a creative flair.

Types of roles available:

Make-up Artist

Make-up Artists apply make-up and style hair for people appearing on camera or in front of a live audience.

Average salary
Variable*

Day-to-day tasks**:

- Research and design make-up and hairstyles
- Work to production designers' notes and instructions
- Tidy and style hair, be on set to redo make-up and hair
- Create special effects make-up
- Take notes and photos for reference
- Remove make-up and keep wigs and hairpieces in good condition

Working environments

You could work at a TV studio, in a theatre, on a film set or at a film studio.

Make-up Consultant

Makeup Consultants demonstrate makeup techniques, suggest products that meet clients' needs and inform customers about product details, such as ingredients, application methods and price.

Average salary
£19,500**

Day-to-day tasks**:

- Talk to customers and recommend the best products for them
- Give advice on how to use and apply products
- Meet sales targets
- Keep up to date with new product ranges
- Monitor stock levels and re-order items
- Keep customer and product records

Working environments**:

You could work at a store, on a cruise ship, in a beauty clinic or from home. You may need to wear a uniform.

In-demand skills

In-demand skills that commonly appear in job descriptions for roles within the hair and beauty sector include*:

Customer Service, Sales, Communication, Enthusiasm and Self-Motivation.

MEDIA, MOVING IMAGE AND PHOTOGRAPHY

Bachelor of Arts (Hons) in Media, Moving Image and Photography

 **Delivered over two days or less**

Location

University Centre Rotherham
Rotherham College

Course Duration

3 years - Full-time

Apply online via

Our college websites
UCAS Centre Code 'R52'

Awarding Body

University of Hull

Course Fee

£6,900 per year

UCAS Points

64



MEET OUR INDUSTRY EXPERIENCED TEACHING TEAM

I have worked as a professional photographer in industry for the last 12 years. My specialism is primarily portraiture and commercial photography. I still work in industry today to create portraits for both individuals and commercial clients.

Daniel Ashton
Curriculum Team Leader of Media,
Photography and Graphics



Scan here to find out more about what Daniel's industry experience brings to his teaching.

MEDIA, MOVING IMAGE AND PHOTOGRAPHY

Course Overview

This course focuses on the creative industries, within the sectors of media and photography.

It embraces the ever-changing technologies and platforms associated within the lens-based industries and aims to develop you into a work-ready, creative, independent and highly skilled media and photography practitioner.

Working across either a media or photography pathway or a combination of the two, students will become production ready whilst also exploring the mediums from cultural, historical and academic perspectives.

The modules on this course will allow students to work on both self-generated and client-led briefs, which will challenge and inspire students to think creatively.

These skills will enable students to gain work placements, find freelance opportunities and gain an insight into the lens-based industries.

Modules Covered

Year 1:

- Digital Foundations
- Research Techniques
- Historical Context

Specialist Pathway modules include: (Media pathway)

- Single Camera Techniques, Multi Camera Techniques, Film Studies

(Photography pathway)

- Processes and Approaches to Traditional Photography, Processes and Approaches to Digital Photography, Digital Image Manipulation

Year 2:

- Professional Practice
- Negotiated Practice
- Specialist Practice Investigation

Specialist Pathway modules include: (Media pathway)

- Sound Design
- Scriptwriting for Moving Image
- Advanced Production for Moving Image
- Photographic Genres and Technologies
- Introduction to the Artists Book
- Digital Story Telling

Year 3:

- Dissertation
- Freelance Practice
- Marketing and Branding for Lens- Based Praioners
- Realisation and Development
- Planning and Developing an Exhibition

Why Study With Us?

We provide smaller study groups with training from industry professionals in industry settings.

Students will have access to industry-standard facilities, including TV studio, radio studio, photography studio, a traditional photographic dark room and edit suites.

Trips will also take place during the course of study including film festivals, exhibitions, trade shows and creative based residentials.

Career Opportunities

Upon completion of this course you could go into employment as a Photographer, a TV or Film Producer/Director, a Photography or Moving Image Editor, a small business owner or Freelancer.

Entry Requirements

- A relevant Level 3 qualification
- GCSE English and maths at grade C/4 or above or equivalent
- You will also be expected to provide examples or a showreel/portfolio of work at interview

FUTURE CAREERS IN MEDIA AND PHOTOGRAPHY

The Media and Photography sector is ideal for those who are interested in the creation of content for film, television and radio.

Types of roles available:

Photographer

Photographers assist with and operate photography equipment for entertainment, cultural, commercial and industrial purposes.

Average salary
£30,300*

Day-to-day tasks**:

- Turn research ideas into technical plans, using computer aided design/modelling (CAD/CAM)
- Discuss a project with the client and agree the 'brief'
- Find and prepare the location for the photo session
- Choose the right equipment and set up lighting
- Use industry software to edit and process images
- Check image quality and choose the best images to suit the brief
- Promote and run your business

Working environments

You could work in a creative studio. Your working environment may be physically demanding and outdoors in all weathers.

Television Programme Production Coordinator

Television Programme Production Coordinators support Producers in making film or TV programmes.

Average salary
£37,855*

Day-to-day tasks**:

- Hire studio facilities and equipment
- Attend production meetings
- Copy and distribute scripts
- Type and circulate production schedules ('call sheets') and daily reports
- Get permission to use copyrighted music or film clips
- Call camera shots, and cue pre-recorded material

Working environments

You could work at a film studio, at a TV studio, on a film set or in an office. Your working environment may be outdoors some of the time and you may spend nights away from home.

In-demand skills

In-demand skills that commonly appear in job descriptions for roles within the media and photography sector include*:

Communication, Management, Detail Oriented, Enthusiasm and Innovation.

*E MSI 2021 **nationalcareers.service.gov.uk



“The tutors are really friendly and genuinely care about your development as an individual. I have easy access to state-of-the-art equipment used in industry and feel I can be free with my creativity.”

James Poulton
Media, Moving Image and Photography



Scan here to find out more about James' experience.

POPULAR MUSIC PERFORMANCE AND PRODUCTION

Bachelor of Arts (Hons) in Popular Music Performance and Production

Location

University Centre Rotherham
Rotherham College

Course Duration

3 years - Full-time

Apply online via

Our college websites
UCAS Centre Code 'R52'

Awarding Body

University of Hull

Course Fee

£6,900 per year

UCAS Points

64

Course Overview

We create opportunities and prepare students with the required knowledge, skills and behaviours to enter the music industry effectively.

The course offers an educational experience where the key focus is on your career path and progression route. The course will assist you in nurturing your passion for popular music and stimulate academic curiosity in the subject.

You are given access to a range of industry connections through experienced lecturers who continually work in the world of music performance and technology.

Many of our students have turned their passion into careers. We have an incredible alumni working in a large range of employment areas that actively engage with current undergraduates to offer support, guidance and networking opportunities.

Modules Covered

Year 1 - Level 4

- Music Theory in Practice
- Introduction to Ensemble Project
- Professional Roles and Practice
- Practitioner Skills 1 (Exploring Genre)
- Practitioner Skills 2 (Exploring Technique)
- Skills for the Professional World

Year 2 - Level 5

- Musicology
- Ensemble Project
- Popular Music in Practice
- Practitioner Skills 3 (Solo Project Design)
- Practitioner Skills 4 (Solo Project Delivery)

Year 3 - Level 6

- Dissertation 1 (Advanced Research Skills)
- Dissertation 2 (Final Submission)
- Advanced Ensemble Project
- Practitioner Skills 5 (Advanced Solo Project Design)
- Practitioner Skills 6 (Advanced Solo Project Delivery)

Why Study With Us?

This course offers our students the opportunity to be part of the Roland Music Academy which seeks to be innovative and explore new dimensions in the world of music performance and music technology.

The activities our students complete enable them to experience live projects with outside agencies and partners. This offers real life opportunities for building a portfolio of valuable experience and relevant employer links. Students have access to our specialised facilities including live music rehearsal rooms, the region's only silent live performance suite, recording studios, editing facilities and a working studio theatre performance space.

Work experience placements are supported at every opportunity and relevant considerations and adjustments are made in regards to university coursework to ensure that students can make the very most of every opportunity they have.

Teamwork is pivotal to the modern music industry and our programme is specially designed to enable students from technology and performance pathways to study together and combine their skills when working towards a common goal or product.

Career Opportunities

Upon successful completion of this course you will be prepared to enter a range of employment opportunities including being a Performing Musician, Composer, Producer, Live Sound Engineer, Freelance Practitioner, Event Organiser, Artist Management, Agent, Major and Indie Record Label Representative, Venue Management or Educator.

Entry Requirements

- Minimum of two A Levels
- Level 3 Extended Diploma
- GCSE English at grade C/4 is essential and GCSE maths C/4 is desirable but not compulsory
- Access to HE qualification



“University Centre Rotherham has a friendly and welcoming environment that helps me explore my creativity.”

Alyssa Kerry

Bachelor of Arts (Hons) in Popular Music Performance and Production



Scan here to find out more about Alyssa's experience.

PERFORMANCE

THEATRE, ACTING AND PERFORMANCE

Bachelor of Arts (Hons) in Theatre, Acting and Performance

 Delivered over two days or less

Location

University Centre Rotherham
Rotherham College

Awarding Body

University of Hull

Course Duration

3 years - Full-time

Course Fee

£6,900 per year

Apply online via

Our college websites
UCAS Centre Code 'R52'

UCAS Points

64

Course Overview

This course offers a broad practical curriculum underpinned by academic study, with the opportunity for you to influence the way you work. The main pathway is acting however, we do offer alternative modules for the musical theatre pathway.

You will gain an insight into the creation of new work, acting and performance in a range of styles from classical to contemporary. You will discover the theoretical and historical backdrop to theatre, acting and performance and will obtain the industry-desired skills and contacts.

Modules Covered

Year 1

- Approaches to Acting
- Acting with a Mask
- Devising Innovative Performance
- Theatre in Education and Community Arts
- Preparation, Process and Production
- Historical Context of Performance
- Musical Theatre pathway students will study Singing, Movement and Dance

Year 2

- Approaches to Acting
- Site Specific Performance
- Performing Shakespeare
- Performance Study and Demonstration
- TV and Screen Acting
- Musical Theatre pathway students will do Dance and Acting for Musical Theatre

Year 3

- Final Integrated Performance
- Creative Research Dissertation
- Personal and Professional Development
- Musical Theatre pathway students will do a final Musical Theatre Performance

Why Study With Us?

The course includes live projects in partnership with a range of companies and organisations such as the Rotherham Metropolitan Borough Council (RMBC) events team, A Mind Apart Theatre, Open Minds Theatre Company - Life Act, Break-Out Arts, Next Left Political Theatre Collective, Rotherham Music, Rotherham United and South Yorkshire Fire and Rescue as well as the opportunity to deliver workshops to local schools.

Our students also have the opportunity to visit Whitby/Scarborough for three nights to write, act in and direct short films, which are then screened and entered into competitions.

We have an impeccable 100% pass rate with former students from the course being recognised as Student of the Year. Alumni have gone on to set up companies such as Renegade Productions, Anti-Social Theatre, work freelance, act professionally and teach.

A number of our students have performed at the Crucible Theatre and at the National Theatre for the Connexions festival as well as on tour with Rotherham Underground.

Career Opportunities

After successful completion of this course you can progress into acting, directing and arts-related pathways, including stage management, script writing or working freelance in community or youth workshops.

Alternatively, you can progress onto further study on a PGCE or continue your studies to achieve a Masters Degree.

We currently have a 99% success rate for students gaining employment in the industry after completing the degree.

Entry Requirements

64 UCAS points from a combination of the following:

- Minimum of two A Levels
- Level 3 Extended Diploma
- GCSE English at grade C/4 is essential and GCSE maths C/4 is desirable but not compulsory
- Access to HE qualification

FUTURE CAREERS IN PERFORMANCE

The performance sector is ideal for those who are interested in the production and delivery of events and performances.

Types of roles available:

Musician

Musicians write, arrange, orchestrate, conduct and perform musical compositions.

Day-to-day tasks":

- Learn and rehearse music pieces
- Look after your voice and instrument
- Set up your instrument before performances
- Perform in front of an audience
- Prepare for and attend auditions

Working environments

You could work in a theatre, at a music venue or at a recording studio.

Average salary
£32,700*

Producer

Producers plan the organisation of productions including films and stage productions.

Day-to-day tasks":

- Hire staff, cast and crew
- Pitch to television broadcasters to commission your programme
- Read scripts and plan filming schedules
- Work with marketing companies and distributors
- Work out what resources are needed
- Check and approve locations

Working environments

You could work at a TV studio, in an office, at a film studio or on a film set. Your working environment may be outdoors some of the time and you may spend nights away from home.

Average salary
£43,500*

In-demand skills

In-demand skills that commonly appear in job descriptions for roles within the performance sector include*:

Communication, Management, Detail Oriented, Planning and Enthusiasm.

*EMSI 2021 **nationalcareers.service.gov.uk

COURSE INDEX

Access to Higher Education (HE)

Art and Design Level 3	65
Art and Design Foundation Diploma	71
Computing Level 3	66
Criminology and Policing Level 3	67
Health Science Professions Level 3	68
Science Level 3	69

Accounting, Business and Management

Accounting and Business Level 4	73
Business and Management BA (Hons)	74

Animal Management and Land-Based Industries

Animal Management HNC/HND	77
Animal Management (Wildlife and Countryside Conservation) HNC/HND	78

Arts and Graphics

Fine and Applied Art BA (Hons)	81
Graphic Design Foundation Degree	82
Graphic Communication Design BA (Hons) Top-up	83

Caring Professions

Counselling Practice Level 4	89
Therapeutic Counselling Level 4	87
Early Childhood Studies Foundation Degree	90
Early Childhood Studies BA (Hons) Top-up	91
Professional Practice in Health and Social Care Foundation Degree	92

Computing and Digital

Computing and Systems Development BSc (Hons)	95
Games Design Foundation Degree	96

Education

Education and Professional Development BA (Hons) Top-up	99
Certificate in Education (Lifelong Learning): Full-time	100
Certificate in Education (Lifelong Learning): Part-time	101
Learning Support Foundation Degree	102
PgCE/PGCE: Full-time	103
PgCE/PGCE: Part-time	104
Education and Professional Development Master of Arts (MA)	105

Engineering

Electrical and Electronic Engineering HNC/HND	109
General Engineering HNC/HND	110
Mechanical Engineering HNC/HND	111

Hair and Beauty

Theatrical Hair and Media Make-up Foundation Degree	115
Specialist Make-up HNC/HND	116
Theatrical Hair and Media Make-up BA (Hons) Top-up	117
Dermaplaning	118
Laser and Light	119
Microblading	121
Skin Needling	122
Skin Peeling	123

Media, Moving Image and Photography

Media, Moving Image and Photography BA (Hons)	126
---	-----

Performance

Popular Music Performance and Production BA (Hons)	131
Theatre, Acting and Performance BA (Hons)	132

Open Events

Saturday 18th November 2023

10.00am – 12.00pm

.....

Saturday 27th January 2024

10.00am – 12.00pm

.....

Wednesday 1st May 2024

3.30pm – 6.30pm

.....

Saturday 16th November 2024

10.00am – 12.00pm

.....

Please refer to our website ucr.rotherham.ac.uk/open-events

Rotherham College
North Notts College
Dearne Valley College
and
University Centre Rotherham

Part of
RNN GROUP

 **RNN GROUP**
SUSTAINABILITY

 **QAA**
UK Quality Assured