

The background is a solid pink color. There are three blue lines: one near the top, one in the middle that forms an 'X' shape, and one near the bottom.

# University Centre Rotherham

**2027/2028**



**UCR**  
University Centre Rotherham

**UCR**  
University Centre Rotherham

**UCR**  
University  
Centre  
Rotherham  
PART OF RNN GROUP

**BCR**  
Business  
Centre  
Rotherham  
PART OF RNN GROUP

# WELCOME



**We're here to help you achieve your goals and aspirations, whatever they may be.**

**Whether you're continuing your studies, changing career path or returning to education, we're here to help you succeed.**

**With us, you'll learn real-world skills for success.** Our industry-experienced lecturers bring passion and apply experience to what they teach. We co-design our courses with key employers, so you can be assured that what you're learning is what is required within your chosen career. You'll be able to soak up the skills needed to hit the ground running in the world of work - whether your career is just beginning, progressing, or changing.

Our smaller class sizes also allow our expert staff to tailor their teaching to your learning styles whilst getting to know you and provide the support you deserve.

**Our first-rate facilities prepare you for the future.** The way we work is changing and the way you can learn with us equips you with skills that will help you keep moving forward. As an accredited Google Reference Site, we are recognised by Google for our outstanding use of technology to drive positive outcomes. We use a suite of digital tools including Google Classroom, Google Drive and Google Meet to organise, collaborate and engage with learning.

Our two-storey library is equipped with a wide range of digital and physical resources. Our classrooms are teeming with technology, like our interactive teaching boards, curriculum-specific settings such as photography studios, computing classrooms and graphic design studios, and the latest software for any topics. Laptops can also be borrowed so that you can study in one of our breakout study areas. For social catch-ups, we have a spacious café area and impressive outdoor amphitheatre.

**You'll be part of a driven learning community.** We're part of the RNN Group alongside Rotherham College, North Notts College, Dearne Valley College and other subsidiary training organisations. We offer a range of higher-level and degree courses at our sites across South Yorkshire and North Nottinghamshire, helping our communities achieve their ambitions.

**Your achievements are accredited by top partner universities.** Sheffield Hallam University, the University of Hull and the University of Huddersfield accredit our qualifications, so our courses will set you apart in the world of work. We're proud of our students who graduate from a variety of higher-level courses each year.

Our prospectus gives an insight into all the benefits of studying degrees locally, such as gaining specific skills for your dream career and increasing your earning potential. Throughout this prospectus, you can find out more about our available programmes of study, how to apply, ways to get in touch, funding and financial support and more.

**OVER 90%**  **OF OUR STUDENTS SAID THAT THE TEACHING ON THEIR COURSE WAS GOOD.\***

**You can flexibly fit your studies alongside existing commitments.** Some of our courses are delivered over only one to two days a week (depending on subject area), allowing you to gain a higher-level qualification without the time commitment.

**Your professional and personal fulfilment is at the heart of everything we do.**

\* National Student Survey 2024/25



# CONTENTS

## WELCOME

Why Higher Education?	8
Why Study with Us?	9
Why Study Locally?	10-11
Funding and Financial Support	12-15
Travelling to Us	16-17

## WHO WE ARE

Our Campus Locations	20-27
The Way We Teach	28-29
Excellent Employer Links	30-31
Higher and Degree Apprenticeships	32-33
HN Flex	34-35
Higher Technical Qualifications	36-37
South Yorkshire Institute of Technology	38-39

## YOUR EXPERIENCE

What our Students Say	42-43
Continuing in Education	44-45
Returning to Education	46-47
Support and Wellbeing	48-49
The Full Experience	50-51
Sustainability	52-53

## GET STARTED

Course Levels Explained	56-57
Entry Requirements	58-59
The Application Process	60-61
Get to Know Us	62-63
Our Courses	64-153
Course Index	154-155

# WHY HIGHER EDUCATION?

**Progressing into Higher Education is an investment in your ideal future. Take ownership of your path and open the door to opportunities related to your passions.**

## Studying a higher-level course is...

### ...achieving your ambitions

We all have aspirations, it's what action you take to turn your goals into a reality. Studying a higher-level course is for anyone wanting to take that next step in their education journey - whether you're coming straight from college or sixth form, or are a mature student looking to step-up in your current job, change direction or start something completely new. Higher-level qualifications equip you with the skills, knowledge, and expertise to excel, both personally and professionally.

### ...a boost to your potential earnings

IFS research suggests a significant positive impact of HE on lifetime earnings, with a discounted gain of approximately £240,000 for men and £140,000 for women compared to non-graduates.\*

### ...being in the know

You'll be able to delve into what interests you and you'll be in great company - your class will be full of like-minded individuals and you will be taught by tutors who are industry professionals. Our staff are people in the know and bring real-world experience and knowledge to their teaching. We also have excellent employer links, guest speaker sessions, masterclasses and employer visits, helping you discover a network full of opportunity.

**OVER  
86%**



# WHY STUDY WITH US?

## Degrees Accredited by Top Universities

Our degree and higher-level qualifications are accredited by partner universities including Sheffield Hallam University, the University of Hull and the University of Huddersfield, giving you access to top-quality Higher Education courses closer to home.

## Study Locally

With us you can study a degree on your doorstep. You're able to keep living at home, save additional money and comfortably accommodate your studies around existing commitments.

## Flexible Learning

We offer courses on both a full and part-time basis. Some of our full-time courses are delivered over only one to two days a week (depending on subject area). This allows full-time courses to be accessible no matter what your schedule is, enabling you to develop in something you're passionate about.

## Friendly Campus Community

You'll have access to our purpose-built Higher Education facilities and benefit from smaller and highly-supported class sizes, filled with focused classmates, and be part of a friendly, tight-knit learning community designed to support your development.

## Fantastic Student Experience

Our student experience is one of a kind, and your development and wellbeing is our priority. Your voice is a welcome addition to our learning community, and you can be employed as a Student Ambassador, run for a role in the Student Union or become a Student Voice Representative. Our enrichment activities also provide you the opportunity to try new things, develop new skills and meet a variety of new people outside of the classroom.

## Industry Experienced Teaching Professionals

Our talented team of lecturers are passionate about their practice and bring with them expert knowledge in their fields and a breadth of experience to their teaching. We are passionate about your development and place your success at the heart of everything we do.

**Find out more about the way we teach on pages 28-29.**

## Excellent Employer Links

Our extensive employer links ensure that our teaching matches local and regional skill needs, as well as offering you experience and future employment opportunities. You'll be able to participate in guest speaker sessions, visits from industry experts and live projects to set up a lifetime of opportunity.



# WHY STUDY LOCALLY?

**We are proud to offer our local communities access to higher-level qualifications and degrees to help them achieve their ambitions.**

## **Easy Access to Your Future**

Our state-of-the-art university centre is just a ten-minute walk from Rotherham's revamped central train and bus stations. The centre is also close to multiple car parks, allowing easy access to our wide range of courses and facilities.

## **Investing in Your Community**

We're proud to deliver degrees in the heart of Rotherham, contributing to the regeneration of the town and region by helping you realise your potential.

Rotherham is an evolving community and is pressing forward with the ambitious 'Rotherham 2025' plan. The £150m town centre masterplan included the opening of our university centre, New York stadium, a tram-train service, and the Minster Gardens.

Ongoing and future development includes the Forge Island leisure scheme, markets and a library development, improvements to the public realm, and a new leisure and cultural quarter.

Studying locally means building your skills for a better future in a community that is doing the same.

## **Saving Money**

With our tuition fees ranging from £3,000 to £7,600 per year, you can save money by staying at home, as we charge considerably less than the average £9,500 to £9,750-a-year required by most traditional universities.

## **Tailored to Your Time**

By studying on your doorstep with us, you can tailor your time and flexibly fit study around existing commitments.

Many of our courses are also delivered over just a few days of the week, including some on evenings, so you can flexibly fit your studies around busy family lives, employment, and other commitments.

# FUNDING AND FINANCIAL SUPPORT



## Student Loans

### Tuition Fee Loans

Our full-time courses and some of our part-time courses are eligible for funding via the Student Loans Company which is how most of our students fund their tuition fees.

**Student loans are repayable for graduates from the April following the completion of your course and only when your earnings rise above £26,900 per year.**

This equates to income earnings over £517 per week, or £2,241 per month, or £26,900 per year. This will be deducted from your salary in the same way that tax and national insurance payments are deducted.

For more information on eligibility, the application process and repayment, please visit [www.slc.co.uk](http://www.slc.co.uk)

### Maintenance Loans

You may be eligible for loans and grants to support with living costs during your studies. For more information on eligibility, the application process, potential grants and repayment, please visit the Student Loans Company website.

### Advanced Learner Loans

Advanced Learner Loans are tuition fee loans designed for students aged 19 or above\*, who are undertaking eligible Level 3 to Level 6 courses. This funding route may be an option for students applying for one of the Level 3 Access to Higher Education courses. More information about the Advanced Learner Loans can be found at [www.gov.uk/advanced-learner-loan](http://www.gov.uk/advanced-learner-loan)

For students who can't access tuition fee loans, we offer flexible repayment options.

\*If you are aged 19 - 23 years old and studying your first Level 3, you will not pay tuition fees.

## Other Support

### Childcare Grant

Full-time Higher Education students with children can apply for a Childcare Grant to help with childcare costs for children under 15, or under 17 if they have special educational needs.

You must be eligible for student finance to apply for a Childcare Grant. For further information and eligibility criteria, please visit [www.gov.uk/childcare-grant](http://www.gov.uk/childcare-grant)

### Disabled Students' Allowance (DSA)

It may be possible to receive financial support to cover any additional study related costs you encounter. If you have a sensory or physical disability, a medical condition, mental health difficulty or a specific learning disability, such as Dyslexia or Dyspraxia, you may qualify to apply for support. DSA is available to both new and existing students, full-time or part-time and has no age limit. It may be able to support top-up costs for laptop purchases.

If you qualify for DSA then you will need to have a DSA Needs Assessment to establish the support you will require on your course. More information about eligibility and how to apply can be found at [www.gov.uk/disabled-students-allowance-dsa](http://www.gov.uk/disabled-students-allowance-dsa)

### HE Hardship Fund

Students who are struggling financially throughout the year may be eligible for hardship support. This is a one-off payment to support in times of need. To be eligible, students must have all means of financial support through Student Finance England in place and will need to provide evidence of household income.

### College Bursary

Level 3 Access to Higher Education Diploma students across all of our Colleges and University Centre Rotherham can apply to be supported with additional costs associated with learning e.g. travel and equipment.

**To find out more about financial support call us on 01709 722777 or email [bursary@rnngroup.ac.uk](mailto:bursary@rnngroup.ac.uk)**

# FEES AND FINANCE FAQs



## What is Student Finance?

Student Finance helps students cover the cost of university tuition and living expenses.

## How Do I Apply for Student Finance?

Applications are made through the Student Finance England website. Apply early!

## How Much Money Can I Receive Through a Student Loan?

The amount varies depending on whether you're applying for tuition fee loans, maintenance loans, or both.

## When Do I Start Repaying the Loan?

Loan repayment is contingent upon both completing your studies and earning over a specific income threshold. Repayments start the April following graduation.

## Can I Get Student Finance If I Study Part-Time?

Absolutely

## What About Additional Support?

Extra funding is available for students with children or dependent adults, those with a disability, or those from low-income households.

## What Happens If My Circumstances Change?

You should inform Student Finance England immediately of any changes to your income, household situation, or course details, as it may affect the amount you're entitled to.

## For How Many Years Can I Benefit from Student Finance?

The duration for which you can receive Student Finance support typically depends on the length of your course, plus one additional year if needed, often referred to as the "gift year."

## Can I Apply If I've Previously Studied?

Generally, you can only get funding if it's your first higher education qualification. However, exceptions exist, such as changing course or if you had to leave your studies for personal reasons.

## I want to cover the cost myself and don't need Student Finance.

Great, did you know you can pay for your course monthly by direct debit, so if you are doing a course full time or part time around a job that typically pays monthly, this eases your cash flow rather than paying for it as a lump sum.

Scan here to find out more:



# TRAVELLING TO US



**Our colleges and university centre are easily accessible by bus, train and car.**

## **University Centre Rotherham and Rotherham College**

Rotherham Interchange bus station, is conveniently located close to our town centre campuses and provides great travel access from surrounding areas. We also offer a student bus service from many areas which you can view on our college website.

Scan here to  
find out more:



Our town centre campuses are also located a short walk from Rotherham Central train station (RMC) which runs a number of local train services as well as the tram train service from Sheffield city centre.

A number of public car parks are located within easy walking distance of our town centre campuses including Drummond Street and Percy Street.

## **North Notts College (including the Bridge Skills Hub)**

Worksop has many bus routes offering access to our colleges from North Nottinghamshire and South Yorkshire.

Worksop train station (WRK) is a short walk away from both North Notts College and the Bridge Skills Hub.

North Notts College offers free parking for students and visitors.

## **Dearne Valley College**

Dearne Valley College is situated on many bus routes across South Yorkshire. We also offer a student bus service from many areas which you can view on our college website.

The closest train stations to Dearne Valley College are Bolton-on-Deerne (BTD), Mexborough (MEX), Swinton (SWN) and Wombwell (WOM).

Dearne Valley College offers free parking for students and visitors.

## **Travel passes**

If you often travel by train you could benefit from a railcard.

A 16-25 railcard can get you 1/3 off rail travel for everyone aged 16-25 for £35 for one year or £80 for three years.

Mature students can also apply for a one-year railcard, which can be extended with evidence of continuing to study every year.

There are tickets available for fares in South Yorkshire that range from 1, 7, 28 day or annual period to make travelling to us cheaper.

If you live in Worksop, a Worksop PlusBus ticket gives you unlimited bus travel on participating operator services, around the urban area of Worksop town.

# WHO WE ARE



# OUR CAMPUS LOCATIONS

## Rotherham Campus

UCR is located on Doncaster Gate, in the heart of Rotherham. Rotherham College is located centrally within Rotherham Town Centre.

**UCR** **University Centre Rotherham**  
Doncaster Gate  
Rotherham  
S65 1DA

**RC** **Rotherham College**  
Eastwood Lane  
Rotherham  
S65 1EG

## North Notts Campus

North Notts College is located in Worksop. Higher-level courses and apprenticeships are also offered at The Bridge Skills Hub.

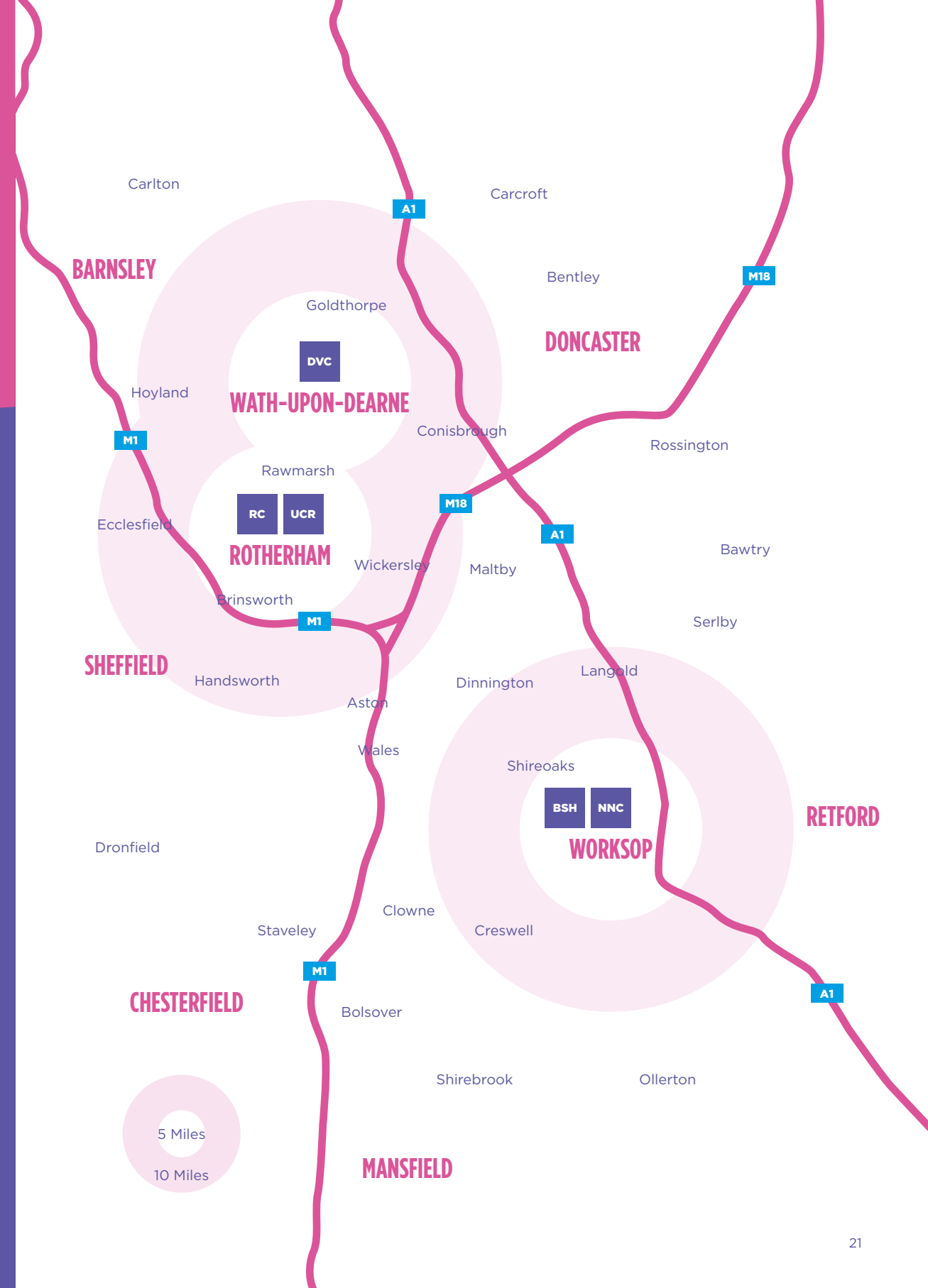
**NNC** **North Notts College**  
Carlton Road  
Worksop  
S81 7HP

**BSH** **Bridge Skills Hub**  
Bridge Place  
Worksop  
S80 1DT

## Dearne Valley Campus

Dearne Valley College is based in Wath-upon-Dearne in Rotherham.

**DVC** **Dearne Valley College**  
Wath-upon-Dearne  
Rotherham  
S63 7EW



# ROTHERHAM CAMPUS

**We're a modern, state-of-the-art campus in the heart of Rotherham, dedicated to providing outstanding outcomes for all of our students.**

## **Our Facilities**

We opened in 2018 with the aim of providing outstanding outcomes for local people. How you learn is important, but where you learn is also vital to determining your success. We believe that your learning environment should show investment in your future, and we've invested in a wide range of first-rate facilities.

You can access the latest research for your subject in our cutting edge two-storey library and catch-up with your classmates in our modern café and variety of social areas, including our outdoor amphitheatre.

## **Our Courses**

Each of our tutors brings a unique set of skills, expertise, and a commitment to helping you succeed.

With courses ranging from level 3 all the way up to level 7, throughout your time studying with us, our tutors will be with you every step of the way.

Our courses are accredited by leading universities, ensuring students benefit from the same academic standards offered at university level, while significantly reducing the financial burden associated with travel and accommodation costs.



# WORKSOP CAMPUS

**North Notts College, Worksop, delivers a variety of Higher Education courses at The Bridge Skills Hub located in the heart of Worksop town centre.**

## **Our Facilities**

The state-of-the-art Education Centre is kitted out with the latest technology and equipment. It houses six classrooms, several breakout spaces, private offices, an auditorium, two clinical teaching rooms, and its very own clinical suite and mock ward.

These facilities offer students exposure to real-world environments while providing a safe space for learning.

## **Our Courses**

Whether you are looking to switch careers, retrain, or further your education, our committed tutors will be there to help you every step of the way. With courses from level 3 to level 5. The Bridge is the perfect place to begin your university education.

Our degree courses are accredited by top universities, meaning you can access the same high-quality education, without having to pay travel or accommodation expenses! We boast strong industry links in the local area and this is reflected in the diversity of the courses we have on offer across the health and social care sector.



# DEARNE VALLEY CAMPUS

**Dearne Valley College provides high-quality Higher Education programmes in Animal Care and Management, Esports, and Health.**

## **Our Facilities**

Our state-of-the-art health facilities, where we have two simulated wards, offer students invaluable hands-on practice. Complementing this practical training there is also a well-equipped laboratory for scientific exploration and modern classrooms.

Our animal care facilities provide a diverse and enriching learning environment for students, encompassing a range of specialised habitats designed to meet the needs of various species.

Our Esports facilities feature suites full of top-specification computers, alongside a room with eight immersive F1 Williams simulator racing rigs.

## **Our Courses**

Our courses are accredited by leading universities, ensuring students benefit from the same academic standards offered at university level, while significantly reducing the financial burden associated with travel and accommodation costs.



# THE WAY WE TEACH



**With us, teaching isn't a one-way transaction. It's an immersive experience designed to deliver you the best learning experience possible.**

## We think learning should...

### Put Passion into Practice

Gaining a qualification isn't just a box-ticking exercise. It's a journey where you should develop the right combination of theory and practice, so you have the skills to succeed in your dream career.

Our learning spaces reflect our approach to your future and aim to provide you with professional and practical skills. You can nurture your passion for animal welfare in our animal housing facilities, level-up your professional prospects in our cutting-edge computer rooms, develop your portfolio using the latest software in our graphic design rooms, brush up on your skills in our media make-up rooms, take centre stage in our performance studio, or frame your future in our high-quality photography studio and much more.

### Be Fit for the Future

Though our facilities are first-rate, studying should be more than just a classroom. By studying with us you'll be getting to grips with the latest in transferable learning techniques which you can take with you as a graduate.

The way we use technology is constantly evolving and we aim to be at the forefront of modern practices. We provide a study experience which emphasises utilising cutting edge digital resources. As an accredited Google Reference Site, we are recognised by Google for our outstanding use of technology to drive positive outcomes. We use a suite of digital tools including Google Classroom, Google Drive and Google Meet to organise, collaborate and engage with learning.

Outside the classroom, you can use and borrow laptops and enjoy access to our impressive and modern two-storey library, equipped with a wide range of digital and physical resources including e-books, online journals, computers and media.

## Expertly Deliver for your Development

Who you learn from is just as important as how and where. Brimming with brilliant minds, our talented teams of lecturers, many of whom are industry experienced, apply real world knowledge to what they teach. Our lecturers listen to industry experts, and incorporate the latest thinking in their delivery - what you learn with us is what you'll use.

In our smaller-than-average class sizes, you get the support you deserve to drive your development. Whether it's additional help, questions or one-to-one time, our lecturers personalise their approach based on your learning preferences. You can take control of your learning, be challenged to create excellence and be guided by staff who hold your success at the heart of all they do.



### MEET OUR INDUSTRY EXPERIENCED TEACHING TEAM

My background is illustration and graphic design, with my clients including Hodder and Stoughton, Oxford University Press, and the Royal Institute of Chartered Surveyors. My industry experience feeds into my teaching in many ways, from delivering workshops in digital design and animation to idea generation, working with clients and developing and refining visual language.

**Richard Lyon**  
Curriculum Team Leader in Visual and Performing Arts



Scan here to find out more about what Richard's industry experience brings to his teaching.



# EXCELLENT EMPLOYER LINKS

## Experience the Difference, with our Extensive Employer Links

Your university education is about so much more than classroom-based learning. Our industry-experienced lecturers provide an extensive and hands-on learning experience, where you will build a network of links with employers from a wide range of industries. Our employer links ensure that what you learn, matches the requirements of local and regional skill needs, and offers you the chance to gain valuable work experience.

## Who we Work with

Our links with businesses ensure that we can provide industry placements and work experience to our students with local and regional employers.

To ensure that you gain vital, hands-on experience and the opportunity to build connections and boost your employment prospects, we work with employers such as the NHS, Premier Foods (Owner of brands such as Cadbury's, Bird's Custard and OXO), AESSEAL, Rotherham Metropolitan Borough Council, Open Minds Theatre Company and Rotherham Music.

## Guest Lectures and Live Projects

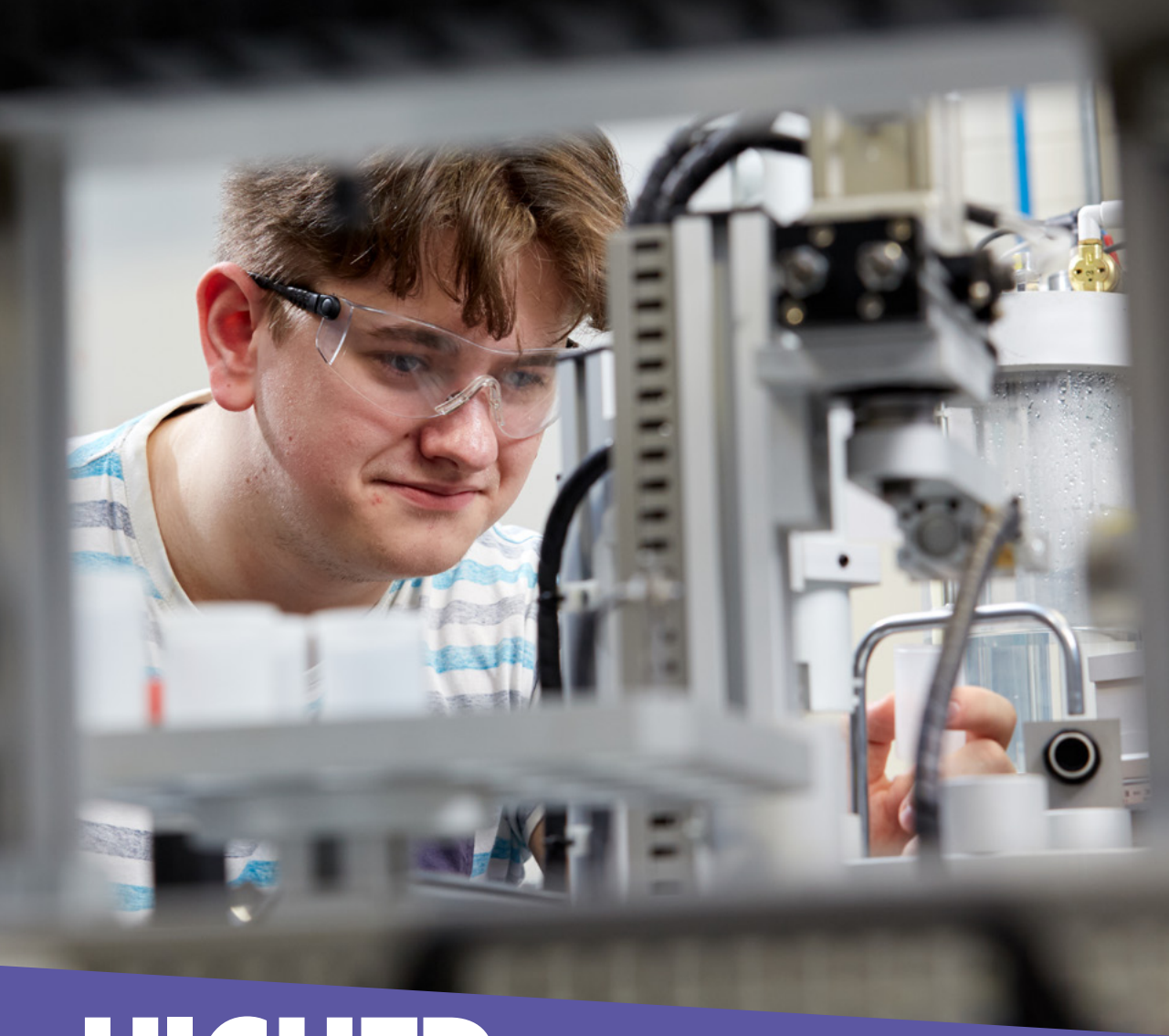
Throughout your studies, you'll have the opportunity to hear from and interact with a number of industry guest speakers.

Across all of our courses, we work closely with experienced individuals in your chosen industry, to offer a series of talks, live projects, workshops and masterclasses.

We also work with a number of partners to give you the opportunity to attend trade shows, exhibitions and competitions, such as WorldSkills UK.

## Careers Advice

Throughout your university experience (including when you graduate as an alumni) you'll have access to a wide range of careers advice and support to secure placements or work experience. With our careers advice, we will help you enhance your CV and provide interview advice and guidance on completing application forms. Whatever support you need, you'll find it through our Careers Team.



# HIGHER AND DEGREE APPRENTICESHIPS

## Earn while you learn. Get your foot in the door. No university fees.

Higher and degree apprenticeships are an exciting way to gain a sought-after qualification and boost your career prospects.

They can be a hands-on approach to getting started in your career, or give your existing career a boost by consolidating your know-how with new knowledge and skills.

We design and deliver our apprenticeships with key local businesses. This ensures you're equipped with the essential experience and skills needed for success in your industry of choice.

**You'll be employed for a minimum of 30 hours per week and the cost of your apprenticeship is usually paid through your employer via their Apprenticeship Levy payments or with up to 95% Government-backed funding.**

Higher and degree apprenticeships at Levels 4, 5 and 6 are equivalent to a Foundation Degree or above.

### Who we work with and how you can apply

If you're already in work, we advise you to ask your employer if they will support you through an apprenticeship; they may have access to Government funding or the Apprenticeship Levy.

If you aren't currently working we can help you find an employer offering higher and degree apprenticeship vacancies. We have developed a wide range of strong links with local employers such as;

- NHS
- AESSEAL
- Rotherham Metropolitan Borough Council
- Local care providers

### What can I study?

**We offer higher and degree apprenticeships in:**

#### Accounting, Business and Management

- Apprenticeship Standard in Operations Departmental Manager, Level 5
- Apprenticeship Standard in Teaching Assistant, Level 5

#### Caring Professions

- Apprenticeship in Leader in Adult Care Level 5

#### Education

- Apprenticeship Standard in Teaching Assistant



**Use this QR code to keep up to date with our latest offers.**

**To find out more, or to apply, contact our dedicated Apprenticeship Recruitment team.**

**Phone:**  
**01709 513147**  
(South Yorkshire office)

**01909 504777**  
(North Nottinghamshire office)

**Email:** enquiries@rnngroup.ac.uk

# HN FLEX

## Your flexible route to higher education.

### What is HN Flex?

HN Flex is a study option that allows you to undertake selected modules of a university-level course on an individual basis facilitating upskilling and reskilling and enabling students to pursue employment within new or alternative sectors.

### Who is it for?

The acquisition of individual Higher National units presents a valuable opportunity for employed individuals pursuing Continuing Professional Development and career advancement.

### How does it work?

It breaks down traditional higher education qualifications into smaller, manageable units, each carrying 15 credits.

Learners have the option to study up to 4 units and stack these units, potentially leading towards a full Higher National Qualification in the future.

Learners can choose units that align with their specific career goals or areas of interest, enabling personalised learning pathways.

### What are the benefits?

This approach caters to those who may not have the time or resources for a full-time qualification. Each module takes around one term to complete and can be undertaken on a flexible basis to suit you.

The modular units are delivered remotely through virtual learning environments, such as Google Classroom, and are supplemented by individualised tutor support. Eliminating the necessity for on-campus attendance.

### Courses Available

#### Rotherham College:

- Business
- Computing
- Engineering
- Modern Methods of Construction

#### North Notts College

- Computing

#### Dearne Valley College:

- Health Science



University Centre Rotherham, Rotherham College, North Notts College and Dearne Valley College offer HN Flex units in digital, construction, engineering and health and science.

Email [ucr@rotherham.ac.uk](mailto:ucr@rotherham.ac.uk) for further information.



# HIGHER TECHNICAL QUALIFICATIONS

**Higher Technical Qualifications (HTQs) are specialist technical courses developed with employers and delivered by industry experts.**

## What are HTQs?

HTQs have been developed in partnership with employers and are delivered by industry experts and focus on the skills, knowledge and behaviours that are in-demand by employers. They can also act as a stepping stone to further study, such as an apprenticeship or undergraduate degree.

Whether you're looking to take the next step in your chosen career or want to retrain into a new industry, an HTQ can help you gain the skills you need for a specialist technical job.

The first HTQs, focussing on digital sector subjects like Cyber Security or Software Development, began teaching in September 2022. New qualifications in Health and Science and Construction successfully launched in September 2023. Please visit our website for updates on our HTQs.

## What will I achieve?

By completing an HTQ you will also achieve a Level 4 or 5 qualification in your subject area. These technical qualifications include Foundation Degrees, Higher National Certificates and Higher National Diplomas.

The courses are classroom-based with the opportunity to learn practical skills through workshops, role playing exercises, or using industry facilities.

## Course Duration

On average an HTQ will take between one and two years to complete if studying full-time. Flexible options such as part-time, online and learning through short courses may also be available.

HTQs are provided by universities, Institutes of Technology, local colleges and independent providers.

## Entry Criteria

Many providers will have their own entry criteria, such as minimum GCSE or A level (or equivalent) requirements. If you don't have GCSEs or A levels, you may be eligible for an HTQ through an Access to HE course.

## Courses Available

### Rotherham Campus:

- HNC Diploma Data Analyst HTQ
- HNC (Level 4) in Digital Technologies (Cyber Security Technologist) HTQ
- HNC Data Analyst HTQ
- HNC in Modern Methods of Construction HTQ

### University Centre Rotherham:

- Foundation Degree (FdSc) in Assistant Practitioner Health and Social Care
- HNC/HND in Animal Management

### Dearne Valley Campus:

- HNC in Esports

# SOUTH YORKSHIRE INSTITUTE OF TECHNOLOGY SYIOT

**The South Yorkshire Institute of Technology (SYIoT) went live in September 2023 engaging with employers and new learners.**

## **What is the SYIoT?**

Backed by over £12 million in funding from the Department for Education, the establishment of SYIoT in South Yorkshire marks a significant milestone for the region, kite-marking the high-quality, higher-level technical education and training provision in the region. One of only twenty-one IoTs nationally, this is a major investment and recognition of the region's higher education providers.

## **What are IoTs?**

IoT is a partnership of employers and education providers. The RNN Group is proud to be in partnership with SYIoT. With the pace of change and emerging and changing technologies, the investment in South Yorkshire ensures that education providers have access to facilities and equipment that can support them to prepare and develop individuals with skills that meet employer's needs.

SYIoT is supported by core employers of HLM Architects, AESSEAL Plc and Pendo. SYIoT already works with over 5,000 employers in the region but a key focus will be extending the reach, particularly to small and medium sized businesses.

## **What do they provide?**

SYIoT provides high-quality training and qualifications in engineering and manufacturing, construction, digital, healthcare sciences, science and media. Qualifications and courses are designed and delivered with local and national employers. This gives students the practical skills and technical knowledge they need to stand out in the job market and provides employers with the reassurance that the training their staff receive can be applied to their business.

## **What do they specialise in?**

Specialising in Higher Technical Qualifications (HTQs), professional training and higher apprenticeships, the investment in facilities and cutting-edge equipment is focused on widening opportunities in higher education. SYIoT offers flexible and affordable qualifications to adults of all ages, and the costs of programmes may be supported by the new Lifelong Learning Entitlement as well as current funding streams. For employers, alongside funding support for apprenticeships, education partners can advise on any other funding available, including the Skills Bank.



# YOUR EXPERIENCE



# WHAT OUR STUDENTS SAY



**“I chose this course because of the high standards that Rotherham College and University Centre Rotherham strive for.”**

**Austin James-Atkins**

BSc (Hons) in Computing and Systems Development



**“I chose to study at University Centre Rotherham because it was open to mature students as opposed to other local colleges at that time.”**

**Naomi Hall**

Access to Health Science Professions



**“I would have been 55 when I started doing this journey... I want to show people it’s never too late, and there’s always a chance to learn.”**

**Jane Galley**

BA (Hons) in Education and Professional Development



**“It is a people-led campus where the campus prioritises the community. The teachers and learners are what drive it and make it a wonderful place to work and study.”**

**James Poulton**

Full-time Lecturer of Media and Photography



**“I picked the University Centre Rotherham because it’s literally 5 minutes away from home here, and it feels more personal with the teaching styles here.”**

**Rebecca Foster**

Foundation Degree in Graphic Design



**“I’m just thankful I had the teaching staff while completing my PGCE, otherwise I wouldn’t be in the position I am in now.”**

**Emily Stables**

PGCE



# CONTINUING IN EDUCATION

**Taking the next steps after college or sixth form is a big decision, and one that may not always be easy.**


Choosing to continue your studies on a higher or degree level course can be exciting and the start of an amazing journey. However, it can also bring worries and doubts about moving away from home or building up student debt.

If you dream of the career you have always wanted, but don't want to move away from home, we put students like you at the centre of everything we do. We will support you with every step of your journey to ensure continuing in education is the best decision you will ever make.

We are a local provider, based in the heart of our communities, that offers a range of higher-level and degree qualifications accredited by top universities, such as Sheffield Hallam University, the University of Hull and the University of Huddersfield.

With us you can gain a top-quality degree at lower-than-average fees on your doorstep whilst being assured that the quality standards are maintained to the highest level. Our lecturers are experts in their fields, with plenty of industry experience and employer networks to share with you. We will help you meet your career goals all whilst studying smart and locally.

Our small and friendly campus creates a fantastic student experience, as you will be recognised as an individual. You will learn in a supportive and relaxed environment in smaller classes compared to other traditional universities - meaning you will receive more, and better, access to one-to-one support and guidance. We care about all of our students, and pride ourselves on our close-knit community.

**OVER  
95%** 

**OF OUR STUDENTS AGREED  
OUR TEACHING STAFF  
SUPPORTED LEARNING  
THIS IS OVER 8% HIGHER THAN  
THE NATIONAL AVERAGE AT  
OTHER PROVIDERS\*.**

\*National Student Survey 2024/25



**“I have progressed here from studying at Rotherham College and am loving the great learning environment.”**

**Alex Wheeler**  
Higher National Diploma in  
Mechanical Engineering

# RETURNING TO EDUCATION



“The teachers are very welcoming and always push me to achieve my goals.”

Caroline Morgan  
BA (Hons) in Fine and Applied Art

If you're 21 or over and looking to return to education, you'll be joining our ever-growing mature student learning community - all of whom are taking a firm step in achieving a wide variety of personal and professional goals.

**Learning as an adult is something...**

### ...For You

Learning as an adult is a wonderful opportunity for you to be the go-getter you know you either are or can be. It opens a door to a brilliant future and offers you the chance to be successful in something you take ownership of and enjoy.

Many of our courses are delivered over just a few days of the week, including some on evenings, so you can flexibly fit your studies around busy family lives, employment, and other commitments.

All of our campuses are also within easy access of local amenities and public transport, making us a great choice if you're looking to get back into education and gain higher and degree level qualifications right on your doorstep.

### ...You Enjoy

You choose what you study, which means learning more about your passions - it's a way to explore something that inspires and excites you. Taking that step in returning to education can be daunting, but it's just the first step on a journey full of increased confidence, achievement, and fulfilled purpose.

You'll be in great company. Many mature students have joined us in their study journey and felt the transition to higher-level study was smooth and they were fully supported. In smaller class sizes, compared to traditional universities, you'll meet like-minded, driven individuals, and will be taught by our insightful lecturers, many of whom bring real-world experience to their teaching. Our staff are also happy to provide any support you need, and we'll always have a friendly face available to offer guidance.

### ...For your Career

Gaining a new qualification brightens your professional future. Whether you're looking for career or pay progression, or want to change career entirely, the in-depth knowledge and skills you'll learn can help you achieve your goals. Our lecturers have industry contacts, and provide guest speakers, so you'll be able to build a professional network tailored to your passions.

Becoming better educated opens doors to your ideal future and broadens your horizon.

### ...To Make a Change

The way we approach work, leisure, and even social activities is evolving in the face of emerging technologies and trends. All this change comes from people driven to improve their communities, and we want you to help yours. As the pace of change increases, many of us will need to update our skills or learn entirely new ones. It's an exciting time, and if you'd like to get ahead of the game then returning to education is a fantastic choice.

**Returning to education is something for you - and we're here to help you succeed.**

## Our Specialist Adult Provision

For anyone aged 19+, we offer courses at different levels across a wide range of curriculum at our Colleges including Rotherham College, North Notts College and Dearne Valley College. Our adult provision includes free, informal and short community courses, flexible distance learning courses and part-time industry-recognised professional qualifications.



# SUPPORT AND WELLBEING

**Learning and wellbeing go hand in hand and it's vital to us that your time here is healthy, holistic, and happy. If you feel at your best, you'll do your best.**

## Student Support

Our student support staff are a helping hand and friendly face who ensure you make the most of your learning journey. Our staff are also always happy to chat through any concerns and queries.

Using our Student Services team, you can also book rooms and resources, and be signposted to relevant staff who are happy to provide support tailored to your needs. This can include course guidance, financial support, sexual health advice, help to stop smoking, additional learning support, and more.

**For more financial support information, please visit pages 14-15.**

## HE Achievemet Coach

Our Higher Education Achievement Coach offers academic skills and pastoral support, so you can improve a variety of assignment and organisation-based skills.

## Disability Support

If you have a disability which affects your study, we will work with you to put an Additional Support Plan in place to ensure you have the right reasonable adjustments. We can also help you to access Disabled Student Allowance if it is appropriate for you.

## We Listen to You

Your learning shouldn't be a one-way transaction; we challenge you to always outdo yourself and expect you to challenge us too. Your voice matters, and we ensure there are opportunities for it to be heard.

We encourage you to have ongoing input into ensuring an effective learning experience, by being part of our Student Voice and Student Representative schemes. Our Student Union provides a platform for our learning community's wants, needs, and opinions, to be recognised.

Our professional Mentors and Counsellors also strive to ensure that you have a fulfilling study experience and feel supported every step of the way.

## FREDIE

FREDIE stands for Fairness, Respect, Equality, Diversity, Inclusion and Engagement, and for the RNN Group and it's Colleges (Rotherham College, North Notts College, Dearne Valley College and University Centre Rotherham) it is the backbone of a truly inclusive culture.

We want everyone, whether staff, students or parents/carers, to feel they belong to a fair organisation and College Group that fosters inclusion through identifying common ground and finding opportunities for connection by recognising a fundamental need for respect that all human beings can understand and appreciate.

For more information visit: [nationalcentrefordiversity.com/meet-fredie](http://nationalcentrefordiversity.com/meet-fredie)





# THE FULL EXPERIENCE

**Students can access a range of activities and support available across our sites to add value to their educational experience.**

## **Your Experience**

We have a focus upon enrichment throughout your experience. Our enrichment programme includes things such as guest speaker events, student events for example fresher's week, a range of clubs, public speaking events, volunteering opportunities, our student union and enrichment sessions.

## **Events**

We plan many events throughout the year for you to get involved with and enjoy your experience with us. More events continue to be added so it's good to keep checking back at our website and social media platforms.

## **Freshers Fair**

Our annual Freshers Fair will give you the chance to interact with staff throughout the university centre, to liaise with local employers, enjoy a bite to eat and make new friends. The experience will be a great start to your time here and give you a taste of what is to come when you study at the University Centre Rotherham.

## **Support**

There is a lot of support available to you throughout your time with us. Our student support teams are there to give you a helping hand to ensure you make the most of your learning journey. This support includes additional learning services, health and wellbeing, finances and accommodation.

**For more support information, please visit pages 48-49.**

For more information please visit  
[ucr.rotherham.ac.uk/student-support/enrichment-and-personal-development](http://ucr.rotherham.ac.uk/student-support/enrichment-and-personal-development)

# SUSTAINABILITY AND WORKING TOWARDS A GREENER FUTURE



**RNN GROUP**  
SUSTAINABILITY

Designed by Student Gracie Firth.

“My logo design consists of a leaf in four sections, each representing the four colleges and university buildings in RNN Group. I hope that my logo can help staff and students to recognise environmental issues and how we can play a part in reducing them.

Gracie Firth  
Graphic Design Student

**Sustainability is central to how we operate at University Centre Rotherham and the RNN Group, something that all staff and students contribute to.**

**Climate change in particular is having an impact on us, here in South Yorkshire with frequent periods of drought, wildfires and flooding.**

We have to change the way we heat and power our buildings, and the way we run our business, to reduce our greenhouse gas emissions and to make our campuses a home for nature. As educators we have an added duty to teach our students about sustainability, in a place in which sustainability is commonplace. We're committed to being sustainable in all that we do and are looking at ways we can do this whilst being innovative.

## **The Sustainable Things We Do**

As a Group, here is a list of the many actions we are taking to reduce our footprint:

### **Energy and Utilities**

The Group has a number of solar panels / solar heaters and wind turbines as well as a ground source heat pump at one college to produce clean energy, as well as capturing rainwater for use and moving to LED lights.

### **Travel and Travel Reduction**

We operate a number of Electric charging points and have a salary sacrifice scheme for bike users, bike boxes for secure cycle storage and shower facilities for bike users too. Not only that, more meetings are conducted digitally to remove travelling between sites and there are hybrid working opportunities for most staff.

Our Transport provider Zeelo - the first global bus platform to offer 100% carbon neutral services - is committed to all-electric vehicles by 2030. Since September 2022 Zeelo have saved 10.01 tonnes of CO2 (3.2Kg per rider) and taken 2,853 car journeys off the road on RNN Group Bus Routes.

### **Recycling and Upcycling**

Our students run clothing rails across the Group for pre-loved clothing to be picked up by another learner and we use recycled wood, metal and plaster across our construction departments as well as recycling cardboard and paper.

### **Environment and Sustainability Committee**

Our learners regularly talk about ways we can make things better and then act on these.

### **Google Reference College**

Through the use of Google Workspace for education, we have significantly reduced printing not only reducing printing costs but supporting our journey to becoming more sustainable by reducing paper usage and energy.

### **Go Local**

We make a point of using local contractors and partners as our suppliers.

### **Flora and Fauna**

We support 'No Mow May' and we have wildlife gardens, woodland management in operation, are part of the Big Schools Bird Watch and Dearne Valley College is a Hedgehog friendly campus.

### **Print and Paper**

As a Group we have moved to non PVC banners which does not involve the use of fossil fuels and all paper that we use for our literature is FSC graded or recycled.

Not only that, we are moving away from printing lots of guides and using QR codes linked to our website on small business cards to reduce our use and reliance on paper.

# GET STARTED





# COURSE LEVELS EXPLAINED

**We are proud to offer a range of higher-level and degree qualifications. Your starting point depends on your existing qualifications.**

Level 3 >>	Level 4 >>	Level 5 >>	Level 6 >>	Level 7
<p><b>Foundation Year</b> Access to Higher Education courses are available if you do not meet the entry requirements or are looking for a career change. You will study for one year in preparation to study a Higher Education course.</p>	<p><b>Higher National Certificate (HNC)/ Higher Technical Qualifications (HTQ)/HN Flex</b> This is the first year of a degree in a subject and equips you with the knowledge and skills for employment in your chosen field. An external body awards this qualification.</p>	<p><b>Higher National Diploma (HND)/ Foundation Degree/ Higher Technical Qualifications (HTQ)</b> Studying at Level 5 provides you with advanced employability skills by building on practical knowledge of your chosen course.</p>	<p><b>Top-up/Bachelors Degree</b> Completing a Bachelors Degree, through either three full years of study or a one-year top-up, provides you with a holistic understanding of your specialist subject.</p>	<p><b>Masters Degree</b> This one-year course enables you to further specialise in an area once you have completed a Bachelors Degree.</p>
<p><b>Please see the relevant course information pages for further detail on your chosen level of qualification.</b></p>				

# ENTRY REQUIREMENTS

## What do I need to apply?

We list entry requirements on all course pages. You'll be interviewed to assess your suitability for the course; relevant work experience is also considered on an individual basis.

Some of our courses require certain amounts of UCAS tariff points. These can be found on each course page.

Wondering how many UCAS tariff points your qualifications are worth? The table opposite shows current UCAS tariff points for some popular qualifications. You can also calculate your points via the UCAS tariff point calculator at: [www.ucas.com/ucas/tariff-calculator](http://www.ucas.com/ucas/tariff-calculator)

AS Level	A Level	T Level	BTEC Extended Diploma	BTEC Diploma	BTEC Subsidiary Diploma	BTEC Certificate	Tariff Points
		D*	D* D* D*				168
			D* D* D				160
			D* D D				152
		D	D D D				144
			D D M				128
		M					120
			D M M	D* D			112
				D* D			104
		P	M M M	D D			96
			M M P	D M			80
		P					72
			M P P	M M			64
	A*				D*		56
	A		P P P	M P	D		48
	B						40
	C			P P	M		32
						D*	28
		D				D	24
A							20
B	E				P	M	16
C							12
D							10
						P	8
E							6

UCAS tariff points are not the only way of applying for our courses. All applicants are invited to an interview to assess their suitability for the course; relevant work experience is also considered on an individual basis.

# THE APPLICATION PROCESS

You can apply to study a course at any of our campuses or colleges specialising in your chosen subject. Our sites include **University Centre Rotherham, Rotherham College, North Notts College and Dearne Valley College.**

## Contact Details

### University Centre Rotherham

Website: [ucr.rotherham.ac.uk](http://ucr.rotherham.ac.uk)

Email: [ucr@rotherham.ac.uk](mailto:ucr@rotherham.ac.uk)

Phone: **01709 722806**

### Rotherham College

Website: [www.rotherham.ac.uk](http://www.rotherham.ac.uk)

Email: [info@rotherham.ac.uk](mailto:info@rotherham.ac.uk)

Phone: **01709 362111**

### North Notts College

Website: [www.nnc.ac.uk](http://www.nnc.ac.uk)

Email: [contact@nnc.ac.uk](mailto:contact@nnc.ac.uk)

Phone: **01909 504500**

### Dearne Valley College

Website: [www.dearne-coll.ac.uk](http://www.dearne-coll.ac.uk)

Email: [learn@dearne-coll.ac.uk](mailto:learn@dearne-coll.ac.uk)

Phone: **01709 513355**

## 1. Search

Find a course that interests you in this guide or by visiting our website at: [ucr.rotherham.ac.uk](http://ucr.rotherham.ac.uk)

Why not visit us at one of our **Open Events**, speak to course tutors and view our facilities?

You can see our **Open Event dates on the next page.**

## 2. Apply

You can apply for some of our courses via UCAS at: [www.ucas.com/students](http://www.ucas.com/students), using '**University Centre Rotherham**', '**RNN Group**', or our centre code '**R52**'.

OR

**Apply through our website.** You can complete our application form at any time throughout the year via our websites.

## 3. Interview

You will be invited to an interview to ensure that the course is right for you. During your interview, you'll meet the teaching team and can ask any questions and discuss any Additional Learning Support requirements.

You may also be required to bring along proof of your qualifications, a portfolio of work and/or audition as part of your interview process.

## 4. Offer

If you are successful at the interview stage, you'll receive either an unconditional or conditional offer for a place on the course. A conditional offer may be subject to exam results and references.



# GET TO KNOW US

Attending one of our Open Events provides you with the opportunity to explore our dedicated Higher Education campus, speak to tutors in the subject areas you're interested in studying, meet other prospective students and get a feel for the courses on offer.



## Open Events

Book your place at: [ucr.rotherham.ac.uk/open-events](http://ucr.rotherham.ac.uk/open-events)

### Other Ways to Explore your Options

We're always happy to talk with you about your future.

**Bespoke personal tours** can be provided of our study and social facilities.

**Have an individual talk** with one of our specialist staff for any queries surrounding courses, funding and financial information or student support.



Scan to book a personal tour

### FOLLOW US

- University Centre Rotherham - UCR
- @universitycentrerotherham
- @RotherhamUni
- @RotherhamUni
- University Centre Rotherham (UCR)

### CONTACT US

Tel: 01709 722806 Email: [ucr@rotherham.ac.uk](mailto:ucr@rotherham.ac.uk)

## 2026

Wednesday 30<sup>th</sup> September

4.30pm - 6.30pm

## 2027

Wednesday 10<sup>th</sup> February

4.30pm - 6.30pm

Wednesday 19<sup>th</sup> May

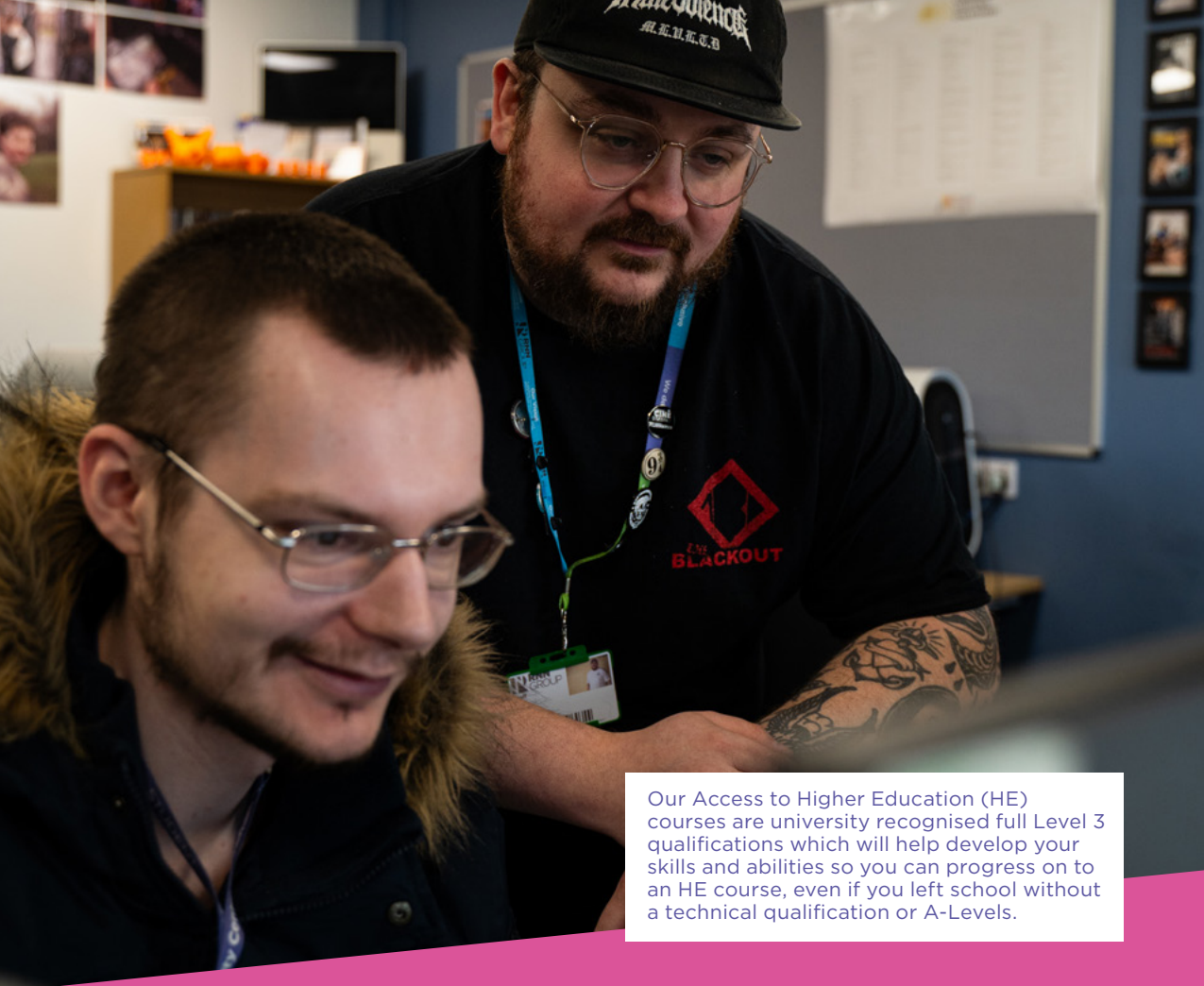
4.30pm - 6.30pm

# COURSES

<b>Access to Higher Education (HE)</b>	<b>66-71</b>	<b>Education</b>	<b>108-121</b>
<b>Accounting, Business and Management</b>	<b>72-75</b>	<b>Engineering</b>	<b>122-127</b>
<b>Animal Management and Land-Based Industries</b>	<b>76-79</b>	<b>Hair and Beauty</b>	<b>128-137</b>
<b>Arts and Graphics</b>	<b>80-87</b>	<b>Media, Moving Image, and Photography</b>	<b>138-141</b>
<b>Caring Professions</b>	<b>88-95</b>	<b>Performance</b>	<b>142-145</b>
<b>Computing and Digital</b>	<b>96-103</b>	<b>Protective Services</b>	<b>146-149</b>
<b>Construction</b>	<b>104-107</b>	<b>Sport and Public Service</b>	<b>150-153</b>
		<b>Course Index</b>	<b>154-155</b>

We make every effort to ensure the information within our Higher Education Prospectus is accurate and a true representation of the courses we are offering in 2027-28. However, we do reserve the right to make changes if necessary. All information correct at the time of going to print.





Our Access to Higher Education (HE) courses are university recognised full Level 3 qualifications which will help develop your skills and abilities so you can progress on to an HE course, even if you left school without a technical qualification or A-Levels.

# ACCESS TO HIGHER EDUCATION

## COMPUTING

Access to HE Diploma: Computing Level 3

<b>Location</b> Rotherham Campus	<b>Course Duration</b> 1 year - Full-time	<b>Apply online via</b> Our campus websites
<b>Awarding Body</b> Certa	<b>Course Fee</b> £3,928	

### Course Overview

Studying this programme will allow you to build up your academic skills and confidence while providing you with the knowledge you need to progress onto studying computing at a higher level at college or university. This one-year course is aimed at students aged 19 or above.

### Modules Covered

- Components of Computer Systems
- Database Development
- Networks
- Project Development
- Software Development
- Spreadsheet Modelling
- Systems Analysis
- Website Design

### Why Study With Us?

You will work on live client briefs and be taught by industry professionals, who will guide you on your journey to becoming a digital practitioner. You will have access to our industry-standard facilities which includes PCs for stripping and re-building.

As well as gaining invaluable work experience, you will participate in projects such as PC repair clinics and code club and develop skills such as employability and teamwork.

There will be the opportunity for you to take part in national and global competitions as well as field trips, which have previously included visits to the Bradford Media Museum and gaming events.

### Career Opportunities

Upon successful completion of this course you may be eligible to begin a Higher Education qualification in a number of areas including computing, computer science, software engineering, business and IT, computer security networks and forensics, web development or games development.

You could also go into employment as a Website Designer, Software Engineer, Network Technician, Data Analyst or Programmer.

### Entry Requirements

- GCSE English and maths at grade C/4 or above or equivalent
- Successful interview with a course tutor
- You must be 19 years or over



# CRIMINOLOGY

Access to HE Diploma: Criminology Level 3

## Location

Dearne Valley Campus

## Course Duration

1 year - Full-time

## Apply online via

Our campus websites

## Awarding Body

New Skills Academy

## Course Fee

£3,022

## Course Overview

Are you passionate about understanding crime, justice, and the forces that shape our society? The Access to HE Diploma (Criminology) is your gateway to an exciting career in criminology, policing, law, psychology, and beyond. This qualification provides a comprehensive foundation in criminology-related fields, covering essential topics such as policing, sociology, social policy, psychology, law and health studies, gaining a well-rounded perspective on crime and justice.

With a strong emphasis on practical learning and real-world application, you'll develop critical thinking, research and analytical skills, as well as the ability to work collaboratively and evaluate evidence, essential for careers in law, social work, or policy-making. Flexible online delivery ensures you can study at your own pace, while expert industry guidance helps you build the knowledge and confidence to progress to university or further education.

## Modules Covered

- Psychology: studying the Brain and Nervous System
- Criminology: Aspects of Situational Crime
- Criminology: The Prison System
- Law: Criminal Court Procedures, Personnel and Sentencing
- Sociology: Exploring Family Structure and Changes

## Why Study With Us

A flexible hybrid delivery model which provides opportunities for learners to develop theoretical underpinning and application of knowledge and skills needed to progress in higher/further education.

## Career Opportunities

Upon completion of this course you could progress onto further study or use your qualification to enhance your prospects of going into a policing career, criminal psychology or forensic psychology, as well as the criminal justice system including border force and the prison and probation services.

## Entry Requirements

- GCSE English language and maths at grade C/4 or above. Level 2 equivalents, such as functional skills will be considered
- Successful interview with a course tutor
- You must be 19 years or over

# HEALTH SCIENCE PROFESSIONS

Access to HE Diploma: Health Science Professions Level 3

## Location

University Centre Rotherham  
The Bridge Skills Hub  
Dearne Valley Campus

## Course Duration

1 year - Full-time

## Apply online via

Our campus websites

## Awarding Body

Skills and Education Group  
Access (SEGA)

## Course Fee

£3,384

## Course Overview

This one-year programme is designed for adults wishing to progress to university to study professional degrees within the health and social care sector.

The course will equip you with the fundamental knowledge, skills and behaviours required to help you progress to the next steps to become the Social Workers, Nurses, Midwives, Paramedics and the Allied Health Professionals of the future.

## Modules Covered

- Biology/Science
- Psychology
- Health
- Study Skills

## Why Study With Us

Our students have successfully progressed onto a wide range of degree programmes at a variety of different universities across the country.

You will be encouraged to gain experiences linked to the health and social care sector, and to develop your knowledge, skills and behaviour specific to the subjects you are studying.

## Career Opportunities

Completing this course opens up opportunities to study courses including:

- Nursing (Adult, Mental Health, Child)
- Midwifery
- Physiotherapy
- Paramedic Practice
- Social Work
- Occupational Therapy
- Diagnostic Radiography
- Radiotherapy and Oncology
- Operating Department Practice
- Nurse Associate
- Assistant Practitioner
- Biomedical Science
- Biology
- Criminology and Psychology
- Public Health and Nutrition
- Health and Human Sciences
- Professional Practice in Health/Social Care

## Entry Requirements

- GCSE English at grade C/4 or above or equivalent
- GCSE Maths at grade D/3 or above or equivalent\*\*
- A maths Functional Skills qualification may be accepted following discussion with the course leader
- You must be 19 years old or over

\*\* If you have GCSE Maths at Grade D (3), it is recommended that you also enrol onto a Level 2 Maths qualification

# SCIENCE

Access to HE Diploma: Science Level 3

## Location

University Centre Rotherham  
Rotherham Campus

## Course Duration

1 year - Full-time

## Apply online via

Our campus websites

## Awarding Body

Certa

## Course Fee

£3,384

## Course Overview

This one-year course will allow you to build up your academic skills and confidence whilst providing you with the knowledge you need to progress onto Higher Education.

This course is an ideal starting point for individuals looking for a career change or career development. Upon successful completion of this course, you will be eligible to begin a Higher Education qualification in science.

## Modules Covered

- Chemistry
- Physics
- Biology
- Maths
- Study Skills

There will also be sessions giving advice and guidance on the UCAS application process and developing a personal statement.

## Why Study With Us?

Our highly qualified and skilled staff are industry specialists and will support you to achieve your full potential and aspirations.

You will be able to develop a broad understanding of the wider spectrum of subjects in science.

## Career Opportunities

Following completion of this course you can go into further study at university level and go into employment in biomedical sciences, nutrition and dietetics, medicinal and pharmaceutical chemistry, radiography, optometry, ophthalmology, marine biology or forensic sciences.

## Entry Requirements

- GCSE English language and maths at grade C/4 or above. Level 2 equivalents, such as functional skills will be considered.
- Successful interview with a course tutor
- You must be 19 years or over



## MEET OUR INDUSTRY EXPERIENCED TEACHING TEAM

“I take my experiences as a registered nurse, in both primary and secondary services, with me everyday in the classroom. Through my experience and through updating my knowledge and skills, I can enhance my teaching and allow students to visualise the links between theory and practice.”

**Gina Burgess**  
Curriculum Team Leader in  
Access Health Science Professions

# BUSINESS AND MANAGEMENT

Bachelor of Arts (Hons) in Business and Management

 Delivered over two days or less

**Location**

University Centre Rotherham

**Course Duration**

3 years - Full-time

**Apply online via**

Our campus websites  
UCAS Centre Code 'R52'

**Awarding Body**

University of Hull

**Course Fee**

£6,900 per year



## BUSINESS HIGHER/DEGREE APPRENTICESHIPS

We also offer an **Operations/ Department Manager Level 5, Level 6 in Chartered Management and Level 7 Senior Leader Degree Apprenticeship.**

To find out more about our Higher and Degree Apprenticeships, contact our Apprenticeship Team on:

**01709 513147**  
or email [enquiries@rnngroup.ac.uk](mailto:enquiries@rnngroup.ac.uk)

# ACCOUNTING, BUSINESS AND MANAGEMENT

### Course Overview

This course covers the main functional areas of business, so is broad in approach and will provide diverse employment opportunities across business disciplines.

Business enterprise is also a focus of the course for a creative approach towards business and for those considering self-employment.

### Modules Covered

**Year 1**

- The Marketing Planning Process
- Accounting and Finance
- Business Environment
- Introduction to Contemporary Business Practices
- Applications for Contemporary Business Practices
- Introduction to Enterprise

**Year 2**

- Engaging with Enterprising Organisations
- Business Law
- Research Methods
- Financial Literacy and Awareness
- Managing People
- Integrated Marketing Communications

**Year 3**

- Specialism – Finance and Accounts, Marketing, Management/HR
- Business Improvement Strategy
- Business Improvement Action and Control
- Dissertation

### Why Study With Us?

Level 4 (Year 1) and Level 5 (Year 2) study will focus on the underpinning business knowledge required to understand how business disciplines interrelate. Level 6 (Year 3) will develop acquired knowledge and abilities to not only become an effective Business Manager, but also the entrepreneurialism to develop a start-up business.

The final year of the programme will develop research, and effective writing of the practical skills utilised to plan a business venture. Each student will develop a business plan and focus on a specialism in either Marketing, Human Resources Management or Accounting. Each student will write a dissertation on the practical skills used and the research required to develop a business venture and to execute it.

### Career Opportunities

Upon successful completion of this course you could go into self-employment, join a business start-up, secure a higher role within a business environment such as finance, or become a graduate trainee within an enterprise context.

### Entry Requirements

- Level 3 BTEC (or equivalent) with a minimum of Merit, Merit, Pass profile

OR

- Three A-Levels at C or above
- GCSE English and maths at C/4 or above (or Level 2 equivalent)
- Relevant work experience would also be an advantage and contribute to entry requirements for mature learner entry

# ACCOUNTING

ACCA (FIA) Diploma in Accounting and Business Level 4

 Delivered over two days or less

## Location

University Centre Rotherham

## Course Duration

1 year - Part-time

## Apply online via

[Our campus websites](#)

## Awarding Body

ACCA

## Course Fee

£2573 +ACCA reg fees

## Course Overview

The ACCA Diploma in Accounting and Business is the highest level of ACCA's Foundation in Accounting (FIA) suite of qualifications. The course is made up of your first three Chartered examinations and provides a solid platform for progression onto the Final Applied Skills Chartered examination papers at Levels 5, 6 and 7.

## Modules Covered

- Financial Accounting
- Management Accounting
- Finance and Business Technology

## Why Study With Us?

All members of the teaching team have worked in the industry and are nationally-recognised as an outstanding provider of accountancy tuition.

We have great links with the Barnsley and Rotherham Chamber of Commerce, local accountancy firms, awarding bodies and national publications, all of whom support the work we are doing with future Accountants.

## Career Opportunities

Upon successful completion of this course you could go into employment as a Management Accountant, Financial Accountant, Assistant Accountant, Payroll Officer, Senior Accounts Clerk, Financial Analyst or Ledger Supervisor.

## Entry Requirements

- Must have undertaken AAT/ACCA Levels 2 and 3 or have extensive relevant professional experience in an accounting function
- You must be 19 or over



### MEET OUR INDUSTRY EXPERIENCED TEACHING TEAM

**I worked as an Accountant and Company Auditor for 10 years prior to teaching – this was in the Medical Industry and Private Training Industry. I decided to teach to offer my knowledge to others, and have been teaching for seven years.**

**Conal White**  
Curriculum Team Leader in Accounting



**The tutors create a great support network, and everybody is really helpful. I get to learn new things and meet new people.**

**Adele Mitchell**  
Accounting and Business Student

# FUTURE CAREERS IN ACCOUNTING, BUSINESS AND MANAGEMENT

The accounting, business and management sector is ideal for those who are organised and have an interest in budget management and marketing.

## Types of roles available:

### Bookkeeper

Bookkeepers maintain an organisation's financial records and help to prepare accounts for filing returns.

#### Day-to-day tasks\*:

- Process purchasing and sales invoices
- Make sure bank statements match income and payment records
- Prepare VAT returns check that accounts are accurate and up to date
- Prepare wages and manage claims for expenses
- Help to prepare annual accounts
- Use computerised accounting systems and handle commercially sensitive and valuable information

#### Working environments\*:

You could work in an office.

Average salary  
**£24,000**  
to  
**£35,000\***

### Payroll Administrator

Payroll administrators make sure employees get paid the right amount on the right date.

#### Day-to-day tasks\*:

- Enter employee data onto a payroll system
- Process wages, overtime, deductions and send out pay slips
- Calculate statutory contributions like pensions and National Insurance
- Audit information to make sure it's accurate and up-to-date
- Answer staff queries about timesheets or pay slips and create payroll reports for management

#### Working environments\*:

You could work in an office.

Average salary  
**£22,000**  
to  
**£35,000\***

## In-demand skills

**In-demand skills that commonly appear in job descriptions for roles within the accounting, business and management sector include\*\*:**

Communication, Detail oriented, Organisational skills, Sales, Time management

\*nationalcareers.service.gov.uk

\*\*Lightcast 2026



# ANIMAL MANAGEMENT AND LAND-BASED INDUSTRIES

## ANIMAL MANAGEMENT

Higher National Certificate - Level 4 in Animal Management  
Higher National Diploma - Level 5 in Animal Management

 Delivered over two days or less

### Location

University Centre Rotherham  
Dearne Valley Campus

### Course Duration

HNC: 1 year - Full-time  
HND: 1 year - Full-time

### Apply online via

Our campus websites  
UCAS Centre Code 'R52'

### Awarding Body

Pearson BTEC

### Course Fee

£6,900 per year

### Course Overview

The course provides you with a wealth of transferable experience and employability skills either to take you straight into industry or onto further study.

The Pearson BTEC Level 5 Higher National Diploma is recognised by Higher Education providers as meeting admission requirements to many relevant Animal Management related courses.

### Modules Covered

#### Level 4

- Animal Health and Welfare
- Business and the Business Environment
- Managing a Successful Project
- Animal Husbandry
- Animal Anatomy and Physiology
- Animal Nutrition
- Ecological Principles
- Animal Collection Management

#### Level 5

- Biological Principles
- Research project
- Anthrozoology
- Evolution and Adaptations
- Animal Therapy and Rehabilitation
- Chemistry for Biologists
- Breeding and Genetics
- Behavioural Approaches to Animal Management

### Why Study With Us?

Our lecturing staff have a wide range of expertise, having worked in a variety of animal-related industries and have many years of experience.

We have a broad range of animals at Dearne Valley College, including livestock and exotics.

You will also have the opportunity to be involved in our land-based retail outlet.

You'll study the theory side of your learning at University Centre Rotherham's modern campus and develop practical, hands-on knowledge at our animal housing facilities at Dearne Valley College.

### Career Opportunities

Upon successful completion of these courses you could go into employment as an Animal Keeper, Animal Controls or Health Officer, Animal Trainer, Animal Nutritionist, Animal Instructor or Animal Behaviour Consultant. You could also go into technician roles in an animal lecturer wildlife capacity and animal science laboratories.

There are also management role opportunities for veterinary practices, animal centres, pet stores, kennels and catteries.

### Entry Requirements

- A BTEC Level 3 qualification in Animal Management, Equine Management or another relevant subject

OR

- A-Levels demonstrating a strong performance in a relevant subject
- GCSE English and maths at grade C/4 or above or equivalent



# FUTURE CAREERS IN ANIMAL MANAGEMENT AND LAND-BASED INDUSTRIES

The animal management and land-based sector is ideal for those who care about improving animal welfare or who enjoy working outside in physically demanding settings.

Types of roles available:

Average salary

**£24,000**  
to  
**£38,000\***

## Veterinary Physiotherapist

Veterinary physiotherapists work with injured animals, or animals with movement problems, to help reduce pain and improve their health.

### Day-to-day tasks\*:

- Learn about an animal's medical history from its owner, keeper or vet
- Work with animals in recovery after operations or accidents
- Plan exercise programmes
- Use manual and electrotherapy methods to reduce pain and help movement
- Write reports on an animal's rehabilitation progress
- Use massage and hydrotherapy techniques

### Working environments\*:

You could work at a veterinary practice, in a therapy clinic, on a farm, at a wildlife park or at a zoo. Your working environment may be physically demanding. You may need to wear a uniform.

Average salary

**£21,000**  
to  
**£24,000\***

## Animal Care Worker

Animal care workers look after animals in kennels, rescue centres, pet shops and sanctuaries.

### Day-to-day tasks\*:

- Check animals daily and monitor their health and behaviour
- Clean out kennels, enclosures, cages or stables
- Prepare food and help out at feeding times
- Clean and groom animals, exercise animals regularly
- Look after sick or distressed animals and update records and deal with questions from colleagues or the public

### Working environments\*:

You could work at an animal welfare centre, at a wildlife park, in kennels or at a store. Your working environment may be outdoors some of the time, physically demanding and dirty.

## In-demand skills

**In-demand skills that commonly appear in job descriptions for roles within the animal management and land-based sector include\*\*:**

Communication, Management, Customer Service, Planning, Detail Oriented.



### MEET OUR INDUSTRY EXPERIENCED TEACHING TEAM

We are proud to work with local businesses on a client basis such as Wentworth Woodhouse, Instant Print, Grimm & Co and YPPA. Working with live clients can sometimes lead to students earning placements with the clients or being offered additional work.

**Humairaa Hussain**  
Lecturer in Graphics

# ARTS AND GRAPHICS

## GRAPHIC DESIGN

Foundation Degree in Graphic Design

 Delivered over two days or less

### Location

University Centre Rotherham

### Awarding Body

Sheffield Hallam University

### Course Duration

2 years - Full-time

### Course Fee

£6,900 per year

### Apply online via

Our campus websites  
UCAS Centre Code 'R52'

### Course Overview

This course will provide you with an opportunity to fulfil your creative ambitions and develop your understanding of current design practice.

You will gain an overview of the whole design and production process. It will give you the knowledge, understanding and skills to enter a range of careers in the graphic arts industries.

Work-based learning is at the heart of this course and is embedded into the modules.

### Modules Covered

#### Year 1

- Design Techniques and Processes
- Graphic Image Making and Communication

#### Year 2

- Work-based Design Projects
- Specialist Creative Response

### Why Study With Us?

The teaching team have a range of experience from practice within the industry with local, national and international networks. They can offer real-world advice to help develop your practice.

You will be based in our professional design studio space which provides a stimulating learning environment, all fully equipped with the latest Mac/Adobe software.

Live projects are set by designers and creatives including Eleven Design/Human Studios/Wentworth Woodhouse/Grimm & Co amongst many others. Students are offered placements to gain insight into the industry and to develop their professional practice.

You will have access to the lecture programme at Sheffield Hallam University where you will be able to see professional graphic designers and creatives and have access to their learning resources.

There's also the opportunity for field trips to local and international venues accompanied by a yearly residential to places such as Paris, Rome, Barcelona, New York and Berlin.

### Career Opportunities

After successful completion of this course, you could top-up your qualification to a Level 6 or pursue employment in graphic design, illustration, UX/UI Design, branding, marketing or alternatively you could become self-employed as a Freelance Designer.

### Entry Requirements

- A relevant Level 3 qualification or substantial relevant experience
- GCSE English and Maths at grade C/4 or above or equivalent
- A portfolio of work
- All applicants who are non-native English speakers, or who have not studied the final two years of school in English, must have an IELTS score of 6.0 or above

# ART, DESIGN AND MEDIA PRACTICE

L4 BTEC Foundation Diploma in Art, Design and Media Practice

## Course Fee

To be confirmed

## Course Duration

1 year - Full-time

## Apply online via

Our campus websites

## Awarding Body

Pearson

## Course Overview

The Foundation Diploma in Art, Design and Media Practice is a practical course designed to develop creative skills and build a strong portfolio for university progression. Learners will explore a range of creative disciplines while developing their own style and professional practice.

Learners will experiment with different media and techniques while building technical skills, research ability and visual communication. The course prepares learners for higher education and career routes within the creative industries.

Learners will explore areas such as Fine Art, Graphic Design, Illustration, Photography, Digital Media and 3D Design.

## Modules Covered

### Core Units

Programming, Networking, Professional Practice, Database Design & Development, Security and Planning a Computing Project (Pearson-set project)

### Specialist Unit

One mandatory specialist unit (e.g. Software Development Lifecycles for the general Computing pathway)

### Optional Unit

One optional unit chosen from a bank of options such as Strategic Information Systems, Management in the Digital Economy, Website Design & Development, Maths for Computing, or Fundamentals of Artificial Intelligence

## Career Opportunities

Potential career pathways include Graphic Design, Illustration, Photography, Digital Media and Production - all part of a UK creative industry that is currently worth around £100 billion.

## Entry Requirements

- GCSE Maths and English at grade C/4 or equivalent
- Level 3 qualification (such as BTEC Nationals in Computing or A-Levels in related subjects) or possess equivalent industry experience to ensure they can successfully engage with the coursework.
- International or non-native English speakers should have an appropriate English proficiency since the qualification is taught and assessed in English



# GRAPHIC COMMUNICATION DESIGN

Bachelor of Arts (Hons) in Graphic Communication Design (Top-up)

 Delivered over two days or less

## Location

University Centre Rotherham

## Awarding Body

Sheffield Hallam University

## Course Duration

1 year - Full-time

## Course Fee

£6,900 per year

## Apply online via

Our campus websites  
UCAS Centre Code 'R52'

## UCAS Points

64

## Course Overview

This course will provide you with an opportunity to fulfil your creative ambitions and develop your understanding of current design practice. It will equip you with the necessary knowledge, understanding and skills required for success and future employment in the graphic design sector.

## Modules Covered

### Part One

- Explore and study an area of interest such as illustration, typography, branding or UX/UI design
- Explore and investigate a research topic that will provide the basis for practical work
- Construct a written project proposal on a research topic within a specialist practice
- Review and evaluate progress, analyse ongoing strengths and weaknesses
- Attend workshops, seminars and lectures led by industry professionals
- Students are also encouraged to enter the Design and Art Direction, New Blood Student Awards each year, to enhance their professional practice and further develop a creative, professional quality portfolio of work

### Part Two

- Research and production of a practical body of work
- Develop an ongoing professional practice by engaging with a range of institutions, local industry and commercial partners
- Graduation project presentation at the Final Year Show at UCR. This is a celebratory event attended by friends, family, industry partners, local design studios and academic institutions

## Why Study With Us?

The teaching team have a range of experience from practice within the industry with local, national and international networks. They can offer real-world advice and guidance to help develop your practice.

You will be based in our professional design studio space which provides a stimulating learning environment, all fully equipped with the latest Mac/Adobe software.

Live projects are set by local and national designers and creatives including Eleven Design, Human Studios, Wentworth Woodhouse, Grimm & Co amongst many others. Students are offered placements to gain insight into the industry and to develop their professional practice.

You will have access to the lecture programme at Sheffield Hallam University where you will be able to see professional graphic designers and creatives and have access to their learning resources.

There's also the opportunity for field trips to local and international venues accompanied by a yearly residential to places such as Paris, Rome, Barcelona, New York and Berlin.

## Career Opportunities

After successful completion of this course, you can pursue employment in graphic design, illustration, UX/UI Design, branding, packaging, advertising, marketing or alternatively you could become self-employed as a Freelance Designer.

## Entry Requirements

- A relevant Level 5 qualification
- GCSE English and maths at grade C/4 or above or equivalent
- Successful interview with a course tutor
- A portfolio of work
- All applicants who are non-native English speakers, or who have not studied the final two years of school in English, must have an IELTS score of 6.0 or above

# FUTURE CAREERS IN ARTS AND GRAPHICS

The arts sector is ideal for those who are detail-oriented and have a passion for creativity.

## Types of roles available:

### Product Designer

Product designers turn ideas for new products into reality, using digital manufacturing, engineering and hand-crafting methods.

Average salary

**£26,000**  
to  
**£46,000\***

#### Day-to-day tasks\*:

- Talk to clients about their needs and ideas on how to meet them
- Investigate how existing products work or how services are used
- Develop ideas with initial sketches and outline plans
- Use 2D and 3D design software to produce detailed blueprints
- Work out which materials are best suited to your design
- Make samples or working models, known as prototypes
- Test and refine prototypes ready for production and check product quality and safety

#### Working environments\*:

You could work in a workshop, in a creative studio or in an office.

### Graphic Designer

Graphic designers create printed and digital materials for magazines, packaging, branding, websites and social media.

Average salary

**£25,000**  
to  
**£40,000\***

#### Day-to-day tasks\*:

- Discuss your client's requirements and come up with creative ideas
- Work out budgets, timescales and deadlines
- Produce design drafts for images, wording, colours, style and layout
- Prepare artwork and templates using design software, present ideas to the design team and clients for approval
- Update materials and online content to match changes to branding
- Keep up to date with design trends and developments in software

#### Working environments\*:

You could work in a creative studio, in an office, at a client's business or from home.

## In-demand skills

**In-demand skills that commonly appear in job descriptions for roles within the art sector include\*\*:**

Communication, Creativity, Detail oriented, Innovative, Time management

\*nationalcareers.service.gov.uk

\*\*Lightcast 2026

# PROFESSIONAL PRACTICE IN HEALTH AND SOCIAL CARE: HE CERTIFICATE

Higher Education Certificate in Professional Practice in Health and Social Care

## Location

University Centre Rotherham

## Course Duration

1 year

## Apply online via

Our campus websites

## CARING PROFESSIONS HIGHER/DEGREE APPRENTICESHIPS

We also offer a **Higher Apprenticeship Level 4 Lead Practitioner in Adult Care, Higher Apprenticeship Level 5 Assistant Practitioner in Health and Higher Apprenticeship Level 5 Leader in Adult Care** where you can combine hands-on learning with studying on-site at University Centre Rotherham or The Bridge Skills Hub in Worksop.

To find out more about our Higher and Degree Apprenticeships, contact our Apprenticeship Team on:

**01709 513147**

or email [enquiries@rnngroup.ac.uk](mailto:enquiries@rnngroup.ac.uk)

# CARING PROFESSIONS

## Course Overview

This course has been designed to enable you to step off and start Year 1 of a professional degree programme within health and social care practice, such as (but not limited to):

- Nursing (Adult, Child, Mental Health)
- Midwifery
- Allied Health Professions
- Social Work

## Modules Covered

### Year 1

- Work Based Learning 1: Academic and Practice
- Reflective and Personal Development Skills
- Essential Sciences for Person-centred Care
- Integrated Holistic Assessment and Delivery of Health and Social Care Interventions

### Year 2

- Work Based Learning 2: Academic and Practice
- Using and Evaluating Evidence to Inform Practice
- Promoting Health, Wellbeing and Independence
- Leadership and Management

## Why Study With Us?

When you choose to study with us, you aren't just sitting in a classroom; you are entering a professional ecosystem designed for success. Our state-of-the-art Higher Education building serves as a modern hub for academic growth, providing the perfect atmosphere for collaborative study and innovation.

However, the real magic happens at our DVC campus, home to some of the best practical assessment wards in the country. These immersive spaces allow you to:

- Utilise Industry Gear: Train with the exact equipment you'll encounter in the workplace.
- Hone Your Skills: Practice complex procedures in a safe, controlled, and high-fidelity environment.
- Bridge the Gap: Transition seamlessly from theory to practice, building the clinical confidence that employers demand.

At our campus, we don't just teach you the profession—we give you the space to master it.

## Career Opportunities

Careers in Health and Social Care include Nursing (Adult, Child, Mental Health), Midwifery, Allied Health Professions and Social Work.

## Entry Requirements

- Maths and English GCSE/Equivalents or working towards.
- OR
- Functional Skills Level 2.
- OR
- Level 3 in Health and Social Care/Child Care or complete a portfolio of evidence of working in sector.

# PROFESSIONAL PRACTICE IN HEALTH AND SOCIAL CARE: FOUNDATION DEGREE

Foundation Degree (FdSc) in Professional Practice in Health and Social Care

## Location

University Centre Rotherham  
The Bridge Skills Hub  
Dearne Valley Campus

## Course Duration

2 years - Full-time

## Apply online via

Our campus websites  
UCAS Centre Code 'R52'

## Course Fee

£6,900 per year

## Awarding Body

Sheffield Hallam University

## Course Overview

This is a specialist Foundation Degree designed for adults wanting to progress towards a professional degree within the health and social care sector.

It has been designed in response to the rapidly changing workforce demands and policy initiatives aimed at modernising services and improving quality, productivity and efficiency. It covers both the academic and work-based competencies that are relevant to a multitude of roles within health and social care settings.

## Modules Covered

### Year 1

- Work Based Learning 1: Academic and Practice
- Reflective and Personal Development Skills
- Essential Sciences for Person-centred Care
- Integrated Holistic Assessment and Delivery of Health and Social Care Interventions

### Year 2

- Work Based Learning 2: Academic and Practice
- Using and Evaluating Evidence to Inform Practice
- Promoting Health, Wellbeing and Independence
- Leadership and Management

## Why Study With Us?

After completion of Year 1 and a successful UCAS application, the course has been designed to enable you to step-off and start Year 1 of a professional degree programme within health and social care practice, such as (but not limited to):

- Nursing (Adult, Child, Mental Health)
- Midwifery
- Allied Health Professions
- Social Work

After completion of Year 2, a successful internal progression interview with Sheffield Hallam University and completion of additional work, the course has been designed to provide you with the opportunity to access specific professional degree programmes (with advanced entry to Year 2), of programmes such as:

- Nursing (Adult) - Year 2
- Allied Health Professions (Various) - Year 2
- Social Work - Year 2

In addition, you could progress onto Year 3 and complete a top-up year at Sheffield Hallam University, to achieve a BSc (Hons) Professional Practice in Health and Social Care.

## Career Opportunities

Upon successful completion of this course (at Year 1 or Year 2) and further study, you can gain employment across a wide range of pathways including Nursing (Adult, Child, Mental Health), Midwifery, Allied Health Professions and Social Work.

In addition, this programme could help you obtain the higher level knowledge, skills and behaviours to enhance your professional development and gain employment in the wider sector including as a Care Worker, Senior Carer, Care Home Manager, Healthcare Assistant, Community Support and Outreach Worker.

## Entry Requirements

- 48 UCAS Points (e.g. A-Levels, Access to HE Diploma, BTEC Level 3 Diploma/Extended Diploma)
- GCSE English and maths at grade C/4 and above (or equivalent)
- Applications may be considered to those who hold equivalent qualifications



# LEADER IN ADULT CARE

Level 5 Apprenticeship in Leader in Adult Care

## Location

University Centre Rotherham

## Course Duration

21-24 months - Part-time

## Apply online via

Our campus websites

## Course Overview

The Leader in Adult Care standard will develop your knowledge skills and behaviours within a general care home manager role.

You will be able to guide and inspire teams to make positive differences to someone's life when they are faced with physical, practical, social, emotional, psychological or intellectual challenges and lead others within your service.

## Modules Covered

- Leadership and management roles and responsibilities
- Governance and quality assurance
- Working with others
- Person-centred practice for positive outcomes
- Professional development, supervision and performance management
- Safe ways of working, protection and risk
- Managing and developing self
- Vision and strategy
- Recruitment, selection and retention
- Coaching and Mentoring
- Mental Capacity

## Why Study With Us?

Our staff are experienced tutors and assessors with a wealth of experience across the health and social care sector. They will support your professional development.

Attending this course will give you the opportunity to meet other people studying your course allowing you to build your professional network and share best practice and ideas within your job role.

## Career Opportunities

Upon successful completion of this course you could go into employment as a Manager within a Care Home, a Care Broker or a Case Manager.

## Entry Requirements

- You are the current manager of a community or residential based service i.e. registered manager, deputy or assistant manager
- Four GCSEs at grade 3 or above including English and Maths. There is also the opportunity to study for English and Maths qualifications if you do not already hold them at the required level
- A clear Disclosure and Barring (DBS) certificate

# EARLY YEARS PROFESSIONAL LEADERSHIP

BTEC Level 4 and 5 HND in Early Years Professional Leadership for England

## Location

North Notts College, Worksop

## Course Duration

1 year - Full-time

## Apply online via

Our campus websites

## Awarding Body

Pearson

## Course Fee

To be confirmed

## Course Overview

At Level 5, students build on early years practice through leadership focused study. Mandatory units include investigating childhood through action research, improving quality in early education and care environments, managing and leading people in children's early education and care environments, managing children's early education and care environments, and mentoring and supervision in early education and care practice. The diploma also includes additional optional and specialist units.

## Why Study With Us?

This course is aimed at students who want a clear route into leadership roles or progression to university. It develops advanced professional skills in management, quality improvement, research, safeguarding, and child centred practice. The qualification is mapped to the Early Years Lead Practitioner occupational standard and is designed to support direct employment and degree progression.

## Career Opportunities

Upon successful completion of this course you could go into employment as a Nursery Leader, Manager, Deputy Manager or other leadership or management roles across early childhood environments.

## Entry Requirements

Students are likely to need relevant prior study and experience, such as a suitable Level 4 qualification, a strong Level 3 profile with progression potential, or relevant work experience. GCSE English and Maths at grade 4 or above are strongly recommended and may be required for employment purposes in England.



# FUTURE CAREERS IN CARING PROFESSIONS

This sector is ideal for those who are passionate about caring for others with sensitivity, can listen to and empower those they look after, and can react calmly and responsively, whatever the situation.

Types of roles available:

## Midwife

Midwives support pregnant people and their babies before, during and after, childbirth.

Average salary  
**£32,000**  
 to  
**£48,000\***

### Day-to-day tasks\*:

- Advise pregnant people and check they are healthy
- Run classes about pregnancy and parenting
- Manage labour and deliver babies
- Advise on ways to manage pain during labour
- Give advice after the baby is born and visit homes to check on parents and the baby

### Working environments\*:

You could work at a client's home, at a health centre, at a GP practice or in an NHS or private hospital. Your working environment may be physically and emotionally demanding. You may need to wear a uniform.

## Social worker

Social workers help to protect vulnerable children and adults from harm or abuse, and support people to live independently.

Average salary  
**£32,000**  
 to  
**£48,000\***

### Day-to-day tasks\*:

- Meet individuals and families to review their needs and make support plans
- Give emotional and practical support to clients
- Build trust and confidence with young people to support their wellbeing
- Help clients develop and maintain independent living skills
- Keep clients safe and take action to protect them when necessary
- Work closely with communities, health professionals and other agencies and keep accurate records
- Write reports and review cases with your supervisors

### Working environments\*:

You could work in an office, in the community, at an adult care home, at a children's care home or in an NHS or private hospital. Your working environment may be emotionally demanding.

## In-demand skills

**In-demand skills that commonly appear in job descriptions for roles within the caring professions sector include\*\*:**

Communication, Compassion, Empathy, Management, Teamwork

\*nationalcareers.service.gov.uk

\*\*Lightcast 2026

# BSC (HONS) COMPUTING AI & CLOUD

Bachelor of Science (Hons) in Computing - AI & Cloud

## Location

University Centre Rotherham

## Course Duration

3 years - Full-time

## UCAS Points

64

## Awarding Body

University of Hull

## Apply online via

Our campus websites

## Course Overview

This course delivers top-tier computer science education through its experienced staff, thoughtfully designed curriculum, and state-of-the-art facilities.

It offers a wide array of computer science modules, including programming languages, database development, cybersecurity, artificial intelligence, and computer networks.

Students can tailor their degree to align with their interests by choosing from specialised streams such as Artificial Intelligence, and Cloud Computing, providing flexibility to accommodate diverse career aspirations.

Additionally, the course ensures personalised support through academic mentoring, one-on-one tutorials, career counselling, and dedicated tutoring. This comprehensive support system empowers students to excel academically and achieve their career goals.

## Modules Covered

### Core units

- The Internet of Things
- Professional Development
- Database Development
- Computer System Architecture
- Computational Thinking
- Programming Fundamentals
- Fundamentals of AI
- Web Coding and Development
- Networking and Cloud Fundamentals
- Big Data Analysis
- Data Analytics and Visualisation
- Computing and Business Enterprise
- Dissertation

### AI Pathway

- Data Structure and Algorithms
- Advanced Programming
- Machine Learning
- Natural Language Processing

### Year 3

- Advanced Cloud
- Cyber Security
- Penetration Testing
- Advanced Networking and Cloud

## Why Study With Us?

You should study here because this course offers exceptional computer science education, supported by experienced staff, a thoughtfully designed curriculum, and state-of-the-art facilities.

You can customise your degree to match your career aspirations by choosing specialised streams such as Artificial Intelligence and Cloud Computing, giving you the flexibility to pursue your interests.

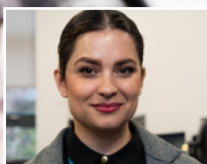
Moreover, personalised support, including academic mentoring, one-on-one tutorials, career counselling, and dedicated tutoring, ensures you receive the guidance needed to excel academically and professionally.

## Career Opportunities

Upon successful completion of this course you could go into employment as a Website Designer, Software Engineer, Network Technician, Data Analyst, Internet Marketer or Programmer.

## Entry Requirements

- 64 UCAS points
  - Access to HE
  - A full Level 3
  - A Level 5 qualification (or equivalent) in a related subject or from an HND to allow for a top up to BSC Degree.
  - Prior knowledge, work experience and qualifications will be considered and discussed upon interview.
- Students are also required to hold English & Maths GCSE (or equivalent) grade C or above.
- Applicants may be admitted with credit for prior certificated learning (APCL) or work/life experience or other uncertificated learning (APeL).



## MEET OUR INDUSTRY EXPERIENCED TEACHING TEAM

“My main area of expertise lies within the field of computers with a particular interest in website design, user interface design, spreadsheet modelling and databases; all key areas which are embedded into the course modules.”

Lavin Osman  
Lecturer in Computing



HTQs and HN Flex courses available in this area

# COMPUTING AND DIGITAL

# ESPORTS

Higher National Certificate - Level 4 in Esports

Higher National Diploma - Level 5 in Esports

## Location

University Centre Rotherham  
Dearne Valley Campus

## Course Duration

HNC: 1 Year Full-time  
HND: 1 Year Full-time

## Apply online via

Our campus websites  
UCAS Centre Code 'R52'

## Awarding Body

Pearson

## Course Fee

£6,900 per year

## Course Overview

Esports is a global phenomenon, growing into an industry that generates billions every year. The esports industry boom is reflected with thousands of new job opportunities appearing every year within esports in the UK and even more globally.

The BTEC HNC and BTEC HND in Esports will help prepare learners for the logistics of operations management by observing these practices in business through the lens of Esports.

You'll gain practical expertise in planning and executing Esports events, managing teams, and optimising operations for international tournaments. The programme also develops skills in entrepreneurship, marketing and community engagement, essential for roles such as Operations Manager, Community Officer or Event Coordinator.

## Modules Covered

### Level 4

- Esports Ecosystem
- Esports Skills, Strategy and Analysis
- Event Planning For Esports
- Esports Research Project
- Entrepreneurial Ventures
- Branding and Sponsorship
- Tournament Operations
- Games Design Philosophy

### Level 5

- Professional Development
- Esports Research Project
- Global Business and Emerging Markets
- Event and Production Financing
- Social Media Management
- Game Analytics and Statistical Insights
- Emerging Technologies

## Why Study With Us?

The Dearne Campus provides a range of high-tech equipment and machines to facilitate the course. We also provide numerous opportunities for students to compete in both internal and external competitions with major figure heads such as the British Esports Federation. We also provide fantastic opportunities for visits to major businesses and providers such as The National Esports Performance Campus, Williams F1 & BETT.

## Career Opportunities

The Esport sector in the UK currently supports over 1,200 direct jobs and is rapidly growing. The course will draw upon the continued success of this national and international industry and provide a programme that will educate and inspire the next generation of industry professionals into careers such as Professional Gaming, Coaching, Business Management, Journalism and Content Creation, Sales, PR and Marketing, Production, and Product Management.

## Entry Requirements

### For HNC:

- Level 3 qualification in a related area (IE: Esports, Computing, Game Design Sports or Media)
- English GCSE Grade 4 or above
- Maths GCSE Grade 4 or above

### For HND:

- As above
- OR
- Completion of Esport HNC Level 4



# COMPUTING: HNC/HND

Higher National Certificate - Level 4 in Computing  
Higher National Diploma - Level 5 in Computing

## Location

North Notts College

## Awarding Body

Pearson

## Course Duration

HNC: TBC  
HND: 1 Year Full-time

## Apply online via

Our campus websites

## Course Overview

The BTEC Higher National Certificate and Diploma in Computing (2022) provide an enhanced work-related curriculum addressing the need for high-quality professional and technical education at Levels 4 and 5.

These qualifications equip students with relevant skills and competencies for the workplace and for progression to further study. The HND offers several specialist pathways (e.g. Software Engineering, Data Analytics, Network Engineering, Cyber Security) to tailor learning to specific career fields.

## Modules Covered

### Core Units (HNC)

Programming, Networking, Professional Practice, Database Design & Development, Security and Planning a Computing Project (Pearson-set project).

### Specialist Unit (HNC)

One mandatory specialist unit (e.g. Software Development Lifecycles for the general Computing pathway).

### Optional Unit (HNC)

One optional unit chosen from a bank of options such as Strategic Information Systems, Management in the Digital Economy, Website Design & Development, Maths for Computing, or Fundamentals of Artificial Intelligence.

## Level 5 (HND)

The HND comprises the Level 4 units plus additional Level 5 units including a substantial Computing Research Project (Pearson-set, typically 30 credits) and specialist modules according to the chosen pathway. For example, an HND (Data Analytics pathway) would include advanced data analysis units, while the Cyber Security pathway covers topics like cryptography and information security. Across all pathways, the HND curriculum totals 240 credits (120 at Level 4 + 120 at Level 5).

## Career Opportunities

Upon successful completion of this course you could go into employment as a Website Designer, Software Engineer, Network Technician, Data Analyst, Internet Marketer or Programmer.

## Entry Requirements

- GCSE Maths and English at grade C/4 or equivalent
- Level 3 qualification (such as BTEC Nationals in Computing or A-Levels in related subjects) or possess equivalent industry experience to ensure you can successfully engage with the coursework.
- International or non-native English speakers should have an appropriate English proficiency since the qualification is taught and assessed in English.

# GAMES DEVELOPMENT

Foundation Degree in Games Development

## Location

University Centre Rotherham

## Awarding Body

Sheffield Hallam University

## Course Duration

2 years - Full-time

## Course Fee

£6,900 per year

## Apply online via

Our college websites  
UCAS Centre Code 'R52'

## UCAS Points

64

## Course Overview

This course has been carefully designed in consultation with employers within the sector to ensure that the content represents the skills and knowledge you need to directly meet the needs of employers within games design.

The focus will be around the development of practical skills which can be applied directly to tasks which are contextualised and able to test your skills in the real world.

## Modules Covered

### Year 1

- Games Design Theory and Project
- 3D Environments for Computer Games
- Introduction to Games Mechanics
- Visual Concepts for Games
- 3D Modelling

### Year 2

- 3D Character Modelling
- Advanced Gameplay Development
- Animation Techniques
- Group Game Design Project
- Human Computer Interfaces for Computer Games
- Sound Design for Games

## Why Study With Us?

Our staff have strong links with industry and the qualification has been designed with employers at the heart of its content. We use state-of-the-art equipment and industry-standard software.

We also have a range of real-life projects that you will be invited to work on as part of your programme.

## Career Opportunities

Upon successful completion of this course you could go into employment as a Games Designer, Games Animator, Level Editor, Assistant Producer or Creative Director.

Alternatively, you can progress onto further education to top-up your degree.

## Entry Requirements

- A relevant Level 3 qualification  
OR
- A minimum of two A Levels in a related subject  
OR
- 60 Access to HE credits (of which a minimum of 45 must be at Level 3) in a related subject
- GCSE maths and English at grade C/4 or equivalent
- Applicants who lack formal qualifications will be set a piece of work to assess their academic potential and relevant experience
- All applicants who are non-native English speakers, or who have not studied the final two years of school in English, must have an IELTS score of 6.0 or above
- All applicants will attend a one-week summer school



# FUTURE CAREERS IN COMPUTING AND DIGITAL

The computing and digital sector is ideal for those who have a passion for keeping up-to-date with the latest trends in technology.

Types of roles available:

Average salary  
**£35,000**  
to  
**£75,000\***

## Artificial Intelligence (AI) Engineer

Artificial intelligence (AI) engineers develop programs and algorithms which teach a machine or computer to carry out tasks and learn from them.

### Day-to-day tasks\*:

- Work with businesses to understand the problems they want to solve
- Develop machine learning models and algorithms
- Run tests on prototypes and analyse data to make improvements
- Find and fix problems or 'bugs'
- Assess the risks associated with new machine learning programs
- Work as part of a team to roll out AI solutions and stay up to date with the latest advancements in AI

### Working environments

You could work in an office, at a client's business or remotely.

Average salary  
**£27,000**  
to  
**£71,000\***

## Computer Games Developer

Computer game developers create video games for phones, tablets, PCs and consoles.

### Day-to-day tasks\*:

- Work with level designers and graphic artists
- Decide what a game will look like and how it will be played
- Create concept art, drawings or storyboards at the planning stage
- Use computer modelling and animation software to make characters and scenes
- Add audio and sound effects, write code to programme the game, fix problems and 'bugs' that testers have found

### Working environments

You could work in a creative studio or in an office.

## In-demand skills

**In-demand skills that commonly appear in job descriptions for roles within the computing and digital sector include\*:**

Communication, Detail orientated, Problem solving, Self-motivation, Management

\*nationalcareers.service.gov.uk

\*\*Lightcast 2026

# MODERN METHODS OF CONSTRUCTION

HNC Modern Methods of Construction (HTQ)

## Location

University Centre Rotherham

## Course Duration

2 years - Part-time

## Apply online via

Our campus websites

## Awarding Body

Pearson

## Course Fee

£5,986

## Course Overview

Modern methods of construction are seen as a way to solve the UK's housing crisis with the potential for a 30% improvement in speed of construction of new homes through adoption of innovation with a 25% reduction in costs as well as advances in energy efficiency and quality.

This course will provide you with an in-depth understanding of both the design and technical requirements to meet the needs of the 21st century in terms of sustainability and efficiency concerning building methods of the future from factory produced structures built offsite to more easily assembled modular components.

## Modules Covered

- Construction Design Project (Pearson-set)
- The Construction Environment
- Construction Technology
- Principles of Off-site Construction
- Building Information Modelling
- Principles of Alternative Energy
- Tender & Procurement
- Digital Applications for Construction Information

## Career Opportunities

Careers that are available on completion of the course include architectural technologist, construction managers and digital engineers. Further opportunities should be available to progress your career into more senior and management roles and responsibilities with experience.

## Entry Requirements

Pathways for entry onto the course are as follows:

- A level 3 qualification in Construction or Civil Engineering discipline
- A minimum of two 'A' levels in scientific subject areas
- Proven relevant industrial management experience in the Construction Industry

# CONSTRUCTION



HN Flex courses  
available in this area



# FUTURE CAREERS IN CONSTRUCTION

The Construction sector is ideal for those who are innovative and aim for a high quality assurance.

Types of roles available:

## Construction Manager

Construction managers organise building projects to make sure they're completed safely, within budget and on time.

### Day-to-day tasks\*:

- Review plans with architects, surveyors and engineers
- Hire staff and make sure the site has the materials it needs
- Organise work schedules
- Monitor building progress and costs
- Check the quality of the work your team has done
- Report progress to clients, partners and local communities
- Maintain and promote health and safety

### Working environments\*:

You could work on a construction site or at a client's business. Your working environment may be outdoors in all weathers, at height and you may spend nights away from home. You may need to wear protective clothing.

Average salary

**£27,000**  
to  
**£65,000\***

## Building Site Inspector

Building site inspectors check the quality and safety of construction work.

### Day-to-day tasks\*:

- Inspect construction sites
- Check that work is following building regulations
- Make sure that work is following project plans
- Measure and sample building materials to check their quality, find defects and recommend ways to fix them
- Monitor work progress and write reports for construction managers and clients

### Working environments\*:

You could work in an office or on a construction site. Your working environment may be outdoors some of the time. You may need to wear protective clothing.

Average salary

**£21,000**  
to  
**£50,000\***

## In-demand skills

**In-demand skills that commonly appear in job descriptions for roles within the construction sector include\*:**

Communication, Customer service, Detail oriented, Organisational skills, Problem solving

\*nationalcareers.service.gov.uk

\*\*Lightcast 2026

# EDUCATION AND PROFESSIONAL DEVELOPMENT (TOP-UP)

**Bachelor of Arts (Hons) in Education and Professional Development (Top-up)**

## Location

University Centre Rotherham

## Course Duration

2 years - Part-time

## Apply online via

Our campus websites

## Awarding Body

University of Hull

## Course Fee

£4,400 per year

## Course Overview

This is a two-year, blended learning top-up programme involving attendance at monthly day schools with an expectation of independent study and support by individual tutorials with the module tutor. In addition to this, you will be supported in your studies with academic support from our libraries.

The programme's aim is to enhance your knowledge and skills in three broad areas; critical reflection, policy and practice and research and academic scholarship.

## Modules Covered

### Year 1

- Personal and Professional Development
- Research Methods 1 (Literature Review)
- Research Methods 2 (Research Plan)
- Creativity and Innovation in Practice
- Working in Teams

### Year 2

- Dissertation
- Professional Reflective Review

## Why Study With Us

We have an experienced teaching team who have a good reputation for ensuring you receive a quality teaching and learning experience. The achievement rate on this course is consistently very good with a large proportion of graduates gaining a high degree classification.

Not only will you be supported in your studies by the teaching team, you will receive help from our learning-centred staff in relation to academic and research skills.

As the course is awarded by the University of Hull, all processes, from admissions through to assessment, are regularly reviewed to ensure that there is compliance with the University's academic regulations, equivalence in academic standards, appropriate staffing and resources are maintained and that there is a provision of a good quality Higher Education experience for all students on the programme.

## Career Opportunities

This degree supports progression into a wide range of teaching and education-related roles across all phases of education. Many graduates go on to work as unqualified teachers, learning mentors, pastoral leads, Programme Leaders, Curriculum Leaders, Curriculum Managers, or Teaching and Learning Leads. For those in primary education, it can also provide a valuable alternative route into qualified teacher status (QTS) through postgraduate pathways.

## Entry Requirements

- A Certificate in Education (Cert Ed), Diploma in Education and Training (DiET), or equivalent, achieved within the last six years. This grants entry with 120 credits. An additional 60 credits may be awarded through APL based on verified professional experience, such as curriculum design, staff development, project management, or stakeholder engagement.
- OR a Foundation Degree in a curriculum area related to education, achieved within the last six years, providing 240 credits at Certificate and Diploma levels.
- All applicants must provide detailed evidence of relevant professional responsibilities as part of the application process. This will be assessed by the admissions tutor and verified through references.

# EDUCATION

# CERTIFICATE IN EDUCATION: FULL-TIME

Certificate in Education (Lifelong Learning): Full-time

## Location

University Centre Rotherham

## Course Duration

1 year - Full-time

## Apply online via

Our campus websites

## Awarding Body

University of Huddersfield

## Course Fee

£7,600 per year

## Course Overview

This one-year course is aimed at those who are not currently working within a teaching environment. The course will help you to develop your teaching skills, reflect on current ideas about education and training and creatively explore the professional opportunities open to you.

## Modules Covered

- Research Informed Teaching, Learning and Assessment
- Becoming a Subject Specialist Tutor
- Being a Subject Specialist Tutor
- Policy and Professional Issues

## Why Study With Us

We have an experienced teaching team who have a good reputation for ensuring you receive a quality teaching and learning experience.

Not only will you be supported in your studies by the teaching team, you will receive help from our learning-centred staff in relation to academic and research skills.

As the course is awarded by the University of Huddersfield, all processes, from admissions through to assessment, are regularly reviewed to ensure that there is compliance with the University's academic regulations, equivalence in academic standards, appropriate staffing and resources are maintained and that there is a provision of a good quality Higher Education experience for all students on the programme.

The full-time and part-time Certificate in Education are subject to change in line with University of Huddersfield.

## Career Opportunities

Upon successful completion of this course you could go into employment as a College Lecturer or Teacher, Curriculum Team Leader, a Teacher in Uniformed Services or in learning and development. You could also be a teacher with adult and community learning as well as charitable organisations.

## Entry Requirements

No prior teaching experience is needed. The course is particularly suitable if you have work experience in industry, business and administration, hair and beauty, social work, health service, uniformed services or armed forces.

### You must:

- Have a HNC, CGLI Advanced, NVQ Level 3/4 or recognised professional qualification
- Be able to demonstrate appropriate work experience in the area you wish to teach
- Be prepared to undertake a placement to gain a minimum of 250 hours at a recognised training or education establishment. Voluntary teaching/ training may be acceptable (please ask for more details)
- GCSE Maths and English at grade C/4 or above (applicants with Level 2 Functional Skills will be required to take an entrance test)
- Be able to communicate in standard spoken and written English

### In addition, you must also:

- Complete a satisfactory interview
- Undertake an Enhanced Disclosure and Barring Service (DBS) check
- Provide two satisfactory references

# CERTIFICATE IN EDUCATION: PART-TIME

Certificate in Education (Lifelong Learning): Part-time

## Location

University Centre Rotherham

## Course Duration

2 years - Part-time

## Apply online via

Our campus websites

## Awarding Body

University of Huddersfield

## Course Fee

£3,800 per year

## Course Overview

This two-year course will help you to develop your teaching skills, reflect on current ideas about education and training and to creatively explore the professional opportunities open to you.

Much of the course is focused on practical teaching. You will gain experience of learning and teaching alongside other teachers and trainers, with support from your tutors.

## Modules Covered

- Research Informed Teaching, Learning and Assessment
- Becoming a Subject Specialist Tutor
- Being a Subject Specialist Tutor
- Policy and Professional Issues

## Why Study With Us

We have an experienced teaching team who have a good reputation for ensuring you receive a quality teaching and learning experience.

Not only will you be supported in your studies by the teaching team, you will receive help from our learning-centred staff in relation to academic and research skills.

As the course is awarded by the University of Huddersfield, all processes, from admissions through to assessment, are regularly reviewed to ensure that there is compliance with the University's academic regulations, equivalence in academic standards, appropriate staffing and resources are maintained and that there is a provision of a good quality Higher Education experience for all students on the programme.

The full-time and part-time Certificate in Education are subject to change in line with University of Huddersfield.

## Career Opportunities

Upon successful completion of this course you could go into employment as a College Lecturer or Teacher, Curriculum Team Leader, a Teacher in Uniformed Services or in learning and development. You could also be a teacher with adult and community learning as well as charitable organisations.

## Entry Requirements

No prior teaching experience is needed, however the course is particularly suitable if you have work experience in industry, business and administration, hair and beauty, social work, health service, uniformed services or armed forces.

### You must:

- Have a HNC, CGLI Advanced, NVQ level 3/4 or recognised professional qualification
- Be able to demonstrate appropriate work experience in the area you wish to teach
- Be prepared to undertake a placement to gain a minimum of 250 hours at a recognised training or education establishment. Voluntary teaching/ training may be acceptable (please ask for more details)
- GCSE Maths and English at grade C/4 or above (applicants with Level 2 Functional Skills will be required to take an entrance test)
- Be able to communicate in standard spoken and written English

### In addition, you must also:

- Complete a satisfactory interview
- Undertake an Enhanced Disclosure and Barring Service (DBS) check
- Provide two satisfactory references

# LEARNING SUPPORT

Foundation Degree in Learning Support

## Location

University Centre Rotherham

## Course Duration

3 years - Part-time

## Apply online via

Our campus websites

## Awarding Body

University of Hull

## Course Fee

£4,400 per year

## Course Overview

The Foundation Degree is a vocational programme for those who are involved in learning support as a Teaching Assistant, Classroom Assistant, Learning Mentor or Volunteer in a learning support setting.

All modules are closely related to the work of learning support workers.

## Modules Covered

- Study Skills for Higher Education
- Supporting and Enhancing Learning
- Social Contexts of Learning
- Digital Technologies for Learning
- Working with Professionals and Families
- Managing Behaviour
- Communication, Language and Literacy
- Safeguarding
- Research Methods
- Inclusivity
- Project Module

## Why Study With Us

This is a well-established and popular course with a high achievement rate. The teaching team offers all their students a high level of support and guidance. There is one-to-one support available when needed and studying with us allows you to continue working in your local placement.

As the course is awarded by the University of Hull, all processes, from admissions through to assessment, are regularly reviewed to ensure that there is compliance with the University's academic regulations, equivalence in academic standards, appropriate staffing and resources are maintained and that there is a provision of a good quality Higher Education experience for all students on the programme.

## Career Opportunities

The Foundation Degree in Learning Support enhances employment prospects for those working or aspiring to work in support roles across educational settings. Many graduates progress into roles such as, Learning Mentor, Unqualified Teacher, Pastoral Support Worker, Safeguarding Lead and Behaviour or Inclusion Support Assistant. The course also provides a clear academic progression route. On completion, learners can progress onto the BA (Hons) in Education and Professional Development (Top-Up) at University Centre Rotherham or pursue Qualified Teacher Status (QTS) through a primary teaching route or other appropriate pathways.

## Entry Requirements

You should be in a paid or voluntary learning support position at a recognised training or education establishment for at least two days per week

- Basic IT skills
- A good level of English

# SUPPORTING THE LEARNING OF LEARNERS WITH SPECIAL EDUCATION NEEDS (SEND)

Level 4 Certificate in Supporting the Learning of Learners with Special Educational Needs and Disability (SEND)

## Location

University Centre Rotherham

## Course Duration

1 academic year

## Apply online via

Our campus websites

## Awarding Body

Gateway Qualifications

## Course Fee

£795

## Course Overview

This course is aimed at those who support the Learning of Learners with Special Educational Needs and Disability (SEND). The course is designed to enhance the skills of experienced learning support professionals, focusing on improving support for learners with SEND and helping you develop your practice.

## Modules Covered

- Understanding the Four Broad Areas of Special Educational Need
- Using Evidence-Based Practice with Learners with SEND
- Communication Skills for Professionals Supporting Learners with SEND
- Person-Centred Approaches with Learners with SEND
- Coaching Skills
- Developing the Metacognitive Skills of Learners with SEND
- Action Research

## Why Study With Us

We have an experienced teaching team who have a good reputation for ensuring you will receive a quality teaching and learning experience.

Not only will you be supported in your studies by the teaching team, you will receive help from our learning-centres staff in relation to academic and research skills.

## Career Opportunities

Upon successful completion of this qualification you could progress on to our Foundation Degree in Learning Support or one of our other education and professional development qualifications. You could also progress to more senior or management roles within learning support, particularly within the SEND sector.

## Entry Requirements

- A good level of English
- Aged 19 or over.
- Considerable experience of supporting the learning of learners with SEND
- Be working in a role where you will be able to put into practice the skills you are required to evidence for the qualification.

<b>Location</b> University Centre Rotherham	<b>Course Fee</b> £1000,00	<b>Apply online via</b> Our campus websites
<b>Awarding body</b> NOCN		

### Course Overview

The NOCN Level 5 Certificate in Teaching English to Speakers of Other Languages (TESOL) is a teaching qualification for unqualified or prospective teachers of English for Speakers of Other Languages (ESOL).

This is a level 5 qualification that would give entry to TESOL and does not require candidates to have prior teaching experience. It requires a combination of input training, teaching practice and independent study and is assessed through teaching observations and written assignments.

This level of qualification is increasingly the standard requirement for ESOL teachers around the world.

### Modules Covered

The delivery will include the following topics:

- Assessment of Learning
- Classroom Management
- Classroom Teaching Skills and Techniques
- English Language Awareness
- Learning Materials
- Planning Learning
- Theories, Principles, Models and Learning Processes in Education and Training
- Intercultural Awareness for Teaching Learning and Assessment

### Why Study With Us?

You will be taught by industry professionals who will guide you on your journey to becoming a teacher of ESOL.

### Entry Requirements

Five GCSEs at grade 4 or above including English and Maths or equivalent.

As part of the course, you will be assessed through teaching observations so therefore require a teaching placement up to 8 hours.

<b>Location</b> University Centre Rotherham	<b>Course Duration</b> 6-8 months	<b>Apply online via</b> Our campus websites
<b>Awarding body</b> City & Guilds	<b>Course Fee</b> £495.00	

### Course Overview

This course is designed for those who conduct internal quality assurance of assessments within their organisations. It is designed to develop your knowledge and skills in planning and carrying out quality assurance processes within an education setting, ensuring consistency and reliability in assessment decisions. You will have the opportunity to develop and improve your practice and achieve a recognised professional qualification.

### Modules Covered

- The qualification comprises of two mandatory units:
- Understanding the Principles and Practices of Internally Assuring the Quality of Assessment
  - Internally Assuring the Quality of Assessment

### Why Study With Us?

We have an experienced teaching team who have a good reputation for ensuring you will receive a quality teaching and learning experience.

Not only will you be supported in your studies by the teaching team, you will receive help from our learning-centre staff in relation to academic and research skills.

### Entry Requirements

- A good level of English
- Be working in a role where you will be able to put into practice the skills you are required to evidence for the qualification.

# EDUCATION AND PROFESSIONAL DEVELOPMENT

## Master of Arts (MA) in Education and Professional Development

### Location

University Centre Rotherham

### Course Duration

2 years - Part-time

### Apply online via

Our campus websites

### Awarding Body

University of Hull

### Course Fee

£3,450 per year

## Course Overview

The programme has been designed to further enhance the knowledge and skills of educational practitioners in three broad areas: critical reflection; policy and practice; and research and academic scholarship.

It is an academically rigorous programme underpinned by commitment to professional development which draws upon a range of differing perspectives, academic disciplines and sustainable practices applied to the practitioner's context.

The purpose of the programme is to develop reflexive practitioners who shape and influence policy and its implementation within a changing professional context, whilst responding to the needs of learners, employers and organisations.

The blended learning model will allow for some flexibility in the modes of study, additional support to students through personal and academic tutorials, group seminars, IT and library facilities.

## Modules Covered

### Year 1

- Action Research in Education
- Education in a Digital Society
- Critical Issues in Education

### Year 2

- Mentoring and Coaching for Educational Professionals
- Research Project

## Why Study With Us

This course is designed for those who are already in practice in an educational setting. This may be as a classroom-based Practitioner, Programme Leader or Manager. This could include voluntary roles.

### Career Opportunities

This MA in Education supports both professional and personal development for educators across all sectors. Graduates have progressed into a wide range of roles, including, Senior Leadership in Schools (e.g. Assistant Head, Deputy Head), Curriculum and Phase Leadership, Teaching and Learning Lead roles, Educational Consultant or Specialist Advisor, Lecturer or Tutor in Higher Education and Professional Development or Training Coordinator. The programme also enhances critical reflection and research-informed practice, equipping graduates to lead improvements in teaching and learning and to take on positions with greater strategic responsibility.

## Entry Requirements

- A recognised Honours Degree (first or second class) in an appropriate subject. Relevant APL will be considered
- Applicants are required to be working (paid or voluntary) in an educational organisation

# APPRENTICESHIP STANDARD IN TEACHING ASSISTANT

## Level 5 Apprenticeship Standard in Teaching Assistant

### Location

Rotherham Campus

### Course Fee

Paid by employer

### Apply online via

Our campus websites

## Course Overview

This Specialist Teaching Assistant course prepares you to support learners of all ages in a variety of educational settings, from primary schools to colleges and beyond. You'll gain the skills to plan and deliver specialised learning activities, drawing on research and your chosen area of expertise.

The course offers three specialism options: supporting learners with Special Educational Needs and Disabilities (SEND), focusing on learners' social and emotional well-being, or specialising in a specific curriculum area like early literacy, maths interventions, forest schools, or English as an Additional Language (EAL).

## Modules Covered

During the apprenticeship, apprentices will study and learn the knowledge, skills and behaviours which will prepare for the End Point Assessment:

- Curriculum Frameworks and Planning
- Child Development and Learning Theories
- Inclusive Practice and Equality
- Safeguarding and Wellbeing
- Assessment and Observation
- Teaching Strategies and Resources
- Communication and Collaboration
- Learner Voice and Engagement
- Professional Development and Reflection
- Technology in Education
- Professional Behaviours and Ethics

## Why Study With Us?

We provide state of the art facilities, close links with employers to ensure you develop the knowledge and skills needed in industry, excellent teaching from specialist staff and a small cohort so you will have a high level of support during your time with us.

## Entry Requirements

GCSE grade A-C/4-9 or Level 2 Maths and English equivalent

## PgCE/PGCE: PART-TIME

Professional Graduate Certificate in Education (PgCE – Lifelong Learning): Part-time  
Postgraduate Certificate in Education (PGCE – Lifelong Learning): Part-time

### Location

University Centre Rotherham

### Course Duration

2 years - Part-time

### Apply online via

Our campus websites

### Awarding Body

University of Huddersfield

### Course Fee

£3,800 per year

### Course Overview

This two-year course will help you to develop your teaching skills, reflect on current ideas about education and training and creatively explore the professional opportunities open to you.

Much of the course is focused on practical teaching. You will gain experience of learning and teaching alongside other teachers and trainers, with support from your tutors.

### Modules Covered

- Research Informed Teaching, Learning and Assessment
- Becoming a Subject Specialist Tutor
- Being a Subject Specialist Tutor
- Policy and Professional Issues

### Why Study With Us

We have an experienced teaching team who have a good reputation for ensuring you receive a quality teaching and learning experience.

Not only will you be supported in your studies by the teaching team, you will receive help from our learning-centred staff in relation to academic and research skills.

As the course is awarded by the University of Huddersfield, all processes, from admissions through to assessment, are regularly reviewed to ensure that there is compliance with the University's academic regulations, equivalence in academic standards, appropriate staffing and resources are maintained and that there is a provision of a good quality Higher Education experience for all students on the programme.

The full-time and part-time PGCE is subject to change in line with University of Huddersfield.

### Career Opportunities

Upon successful completion of this course you could go into employment as a College Lecturer or Teacher, a Secondary School Teacher, Curriculum Team Leader, a Teacher in Uniformed Services or in learning and development. You could also be a teacher with adult and community learning as well as charitable organisations.

### Entry Requirements

You should normally be in employment as a teacher or trainer at a recognised training or educational establishment. The course is particularly suitable if you have work experience and/or qualifications in industry, including business and administration, hair and beauty, health and social care, uniformed services or armed forces, construction, engineering and many other vocational areas.

#### Entry requirements for this course are normally:

- Have a minimum of a UK Bachelor's Degree, or equivalent
- Be in paid employment as a teacher or trainer for a minimum of 250 hours, over the two-year programme, at a recognised training or education establishment. Voluntary teaching/training may be acceptable
- GCSE Maths and English (applicants with Level 2 Functional Skills will be required to take an entrance test)
- Be able to communicate in standard spoken and written English

#### In addition, you must also:

- Provide confirmation of an Enhanced Disclosure and Barring Service (DBS) check
- Provide one satisfactory reference
- Complete a satisfactory interview
- Identify a work-based mentor who can support you in your subject specialism

## PgCE/PGCE: FULL-TIME

Professional Graduate Certificate in Education (PgCE – Lifelong Learning): Full-time  
Postgraduate Certificate in Education (PGCE – Lifelong Learning): Full-time

### Location

University Centre Rotherham

### Course Duration

1 year - Full-time

### Apply online via

Our campus websites or via The Department for Education website

### Awarding Body

University of Huddersfield

### Course Fee

£7,600 per year

### Course Overview

This one-year course is aimed at those who are not currently employed within a teaching environment. The course will help you to develop your teaching skills, reflect on current ideas about education and training and creatively explore the professional opportunities open to you.

Much of the course is focused on practical teaching. You will gain experience of learning and teaching alongside other teachers and trainers, with support from your tutors. You will develop key skills needed to be teaching in the education, training and skills sector.

### Modules Covered

- Research Informed Teaching, Learning and Assessment
- Becoming a Subject Specialist Tutor
- Being a Subject Specialist Tutor
- Policy and Professional Issues

### Why Study With Us

We have an experienced teaching team who have a good reputation for ensuring you receive a quality teaching and learning experience.

Not only will you be supported in your studies by the teaching team, you will receive help from our learning-centred staff in relation to academic and research skills.

As the course is awarded by the University of Huddersfield, all processes, from admissions through to assessment, are regularly reviewed to ensure that there is compliance with the University's academic regulations, equivalence in academic standards, appropriate staffing and resources are maintained and that there is a provision of a good quality Higher Education experience for all students on the programme.

### Career Opportunities

Upon successful completion of this course you could go into employment as a College Lecturer or Teacher, a Secondary School Teacher, Curriculum Team Leader, a Teacher in Uniformed Services or in learning and development. You could also be a teacher with adult and community learning, as well as charitable organisations.

### Entry Requirements

#### You must:

- Have a minimum of a UK Bachelor's Degree, or equivalent
- Be able to demonstrate appropriate work experience in the area you wish to teach
- Be prepared to undertake a placement to gain a minimum of 250 hours at a recognised training or education establishment. Voluntary teaching/training may be acceptable (please ask for more details)
- GCSE Maths and English at grade C/4 or above (applicants with Level 2 Functional Skills will be required to take an entrance test)
- Be able to communicate in standard spoken and written English

#### In addition, you must also:

- Complete a satisfactory interview
- Undertake an Enhanced Disclosure and Barring Service (DBS) check
- Provide two satisfactory references

The full-time and part-time PGCE is subject to change in line with University of Huddersfield.



# FUTURE CAREERS IN EDUCATION

The education sector is ideal for those who have a passion for inspiring others and helping people reach their full potential.

Types of roles available:

## Further Education Teacher

Further education (FE) teachers teach academic and vocational or work related courses to young people and adults.

Average salary  
**£27,000**  
to  
**£47,000\***

### Day-to-day tasks\*:

- Teach students of different ages, abilities and backgrounds
- Develop learning plans
- Provide feedback to learners and prepare them for assessments
- Plan and teach classes or practical workshops, using technology where needed
- Support students and refer them to other services, such as careers advisers or counsellors
- Complete admin, like taking registers and ordering resources
- Follow safeguarding and health and safety procedures

### Working environments\*:

You could work at a college, in a sixth form college, an independent training centre, in a prison or at an adult education centre. You may need to wear safety clothing and use safety equipment.

## Special Educational Needs (SEN) Teaching Assistant

Special educational needs teaching assistants (TAs) support teachers to help children with disabilities and special educational needs.

Average salary  
**£19,000**  
to  
**£27,000\***

### Day-to-day tasks\*:

- Prepare learning materials
- Adapt teaching support to meet each student's needs
- Support group and class activities
- Look after children's physical, social and emotional welfare
- Create a safe and interesting environment for students
- Update records and attend review meetings
- Work closely with teachers and other professionals like speech and language therapists

### Working environments\*:

You could work at a school, at a special needs school or at a pupil referral unit. Your working environment may be physically and emotionally demanding.

## In-demand skills

**In-demand skills that commonly appear in job descriptions for roles within the education sector include\*\*:**

Teaching, Research, Mathematics, English Language, Communication

# ELECTRICAL AND ELECTRONIC ENGINEERING

Higher National Certificate - Level 4 in Electrical and Electronic Engineering

Higher National Diploma - Level 5 in Electrical and Electronic Engineering

 Delivered over two days or less

## Location

University Centre Rotherham  
Rotherham Campus

## Course Duration

Level 4 - 18 months - Part-time  
Level 5 - 1 year - Part-time

## Apply online via

Our campus websites  
UCAS Centre Code 'R52'

## Awarding Body

Pearson BTEC

## Course Fee

£7,500 per year

## Course Overview

These courses are designed to provide you with a thorough understanding of the electrical and electronic technologies which are used by businesses nationally and globally.

By studying the theory behind these technologies, you will develop knowledge of how electrical and electronic engineering systems feature in everyday life.

This course provides advanced technical knowledge through electrical and electronic engineering principles, concepts and theory. It also provides the higher-level technical vocational electrical and electronic engineering skills to prepare you for a range of related occupations.

The HNC course is offered on a part-time basis over three semesters (18 months) and can be topped up to an HND qualification with further study.

## Modules Covered

### Level 4 HNC

- Engineering Design
- Engineering Maths
- Managing a Professional Engineering Project
- Production Engineering for Manufacture
- Automation, Robotics and PLCs
- Quality and Process Improvement
- Electrical and Electronic Principles
- Electrical Machines

### Level 5 HND

- Professional Engineering Management
- Further Mathematics
- Further Programmable Logic Controllers
- Further Electrical Machines and Drives
- Industrial Power, Electronics and Storage
- Embedded Systems
- Further Electrical Principles, Electronic and Digital Principles
- Utilisation of Electrical Power

## Why Study With Us?

We continually invest in modern, state-of-the-art equipment including new mechatronics and Programmable Logic Controller (PLC) facilities.

With industry-experienced tutors, the course is designed to equip you with the skill set desired by employers within the electrical engineering industry and provide you with new opportunities for career development.

## Career Opportunities

Upon successful completion of this course you could go into employment as an electrical engineer, another engineering-related occupation or progress onto an engineering degree.

Completing these higher-level courses will also enhance your career opportunities and help meet aspirations for career progression to supervisor or managerial level roles.

## Entry Requirements

### Level 4 HNC entry requirements:

- A relevant Level 3 qualification

### Level 5 HND entry requirements:

- The HND is a one year top-up from the HNC Electrical and Electronic Engineering. The units gained on your HNC must be transferable to suit the HND matrix.

## Engineering Higher Apprenticeships

We also offer a Level 4 Engineering Manufacturing Technician Apprenticeship.

For more information, contact our Apprenticeship Team on: 01709 513147 or email [enquiries@rnngroup.ac.uk](mailto:enquiries@rnngroup.ac.uk)



## MEET OUR INDUSTRY EXPERIENCED TEACHING TEAM

I was a Test Engineer for Celestica, working with a number of companies including Hewlett-Packard, Dell, Sun Microsystems, BAE and ITT corporation. I worked with technicians to repair test machines and debug failing circuit boards. This experience helps me to explain how international companies work and how electronics are manufactured and tested, which I can share with students.

**Andrew Jordan**  
Lecturer in Engineering

# ENGINEERING

# MECHANICAL ENGINEERING

Higher National Certificate - Level 4 in Mechanical Engineering

Higher National Diploma - Level 5 in Mechanical Engineering

 Delivered over two days or less

## Location

University Centre Rotherham  
Rotherham Campus

## Course Duration

Level 4 - 18 months - Part-time  
Level 5 - 1 year - Part-time

## Apply online via

Our campus websites  
UCAS Centre Code 'R52'

## Awarding Body

Pearson BTEC

## Course Fee

£7,500 per year

## Course Overview

These courses are designed to provide you with a thorough understanding of engineering technologies used by businesses nationally and globally.

By studying the theory behind these technologies, you will develop the knowledge of how mechanical engineering systems feature in everyday life.

You will study higher-level technical vocational mechanical engineering skills to prepare you for a range of related occupations. The HNC course is offered on a part-time basis over three semesters (18 months) and can be topped up to an HND qualification with further study.

## Modules Covered

### Level 4 HNC

- Engineering Design
- Engineering Maths
- Managing a Professional Engineering Project
- Mechanical Principles
- Fluid Mechanics
- Fundamentals of Thermodynamics
- Production Engineering for Manufacture
- Quality and Process Improvement

### Level 5 HND

- Professional Engineering Management
- Advanced Mechanical Principles
- Virtual Engineering
- Further Thermodynamics
- Further Mathematics
- Manufacturing Systems Engineering
- Lean Manufacturing
- Thermofluids

## Why Study With Us?

We continually invest in modern, state-of-the-art equipment including new mechatronics and Programmable Logic Controller (PLC) facilities.

With industry-experienced tutors, the BTEC HNC and HND in Mechanical Engineering are designed to equip you with the skill set desired by employers within the mechanical engineering industry and provide you with new opportunities for career development.

## Career Opportunities

Upon successful completion of this course you could go into employment as a Mechanical Engineer, another engineering-related occupation or progress onto further study.

You could also enhance your career opportunities and progression to supervisor or managerial level roles.

## Entry Requirements

### Level 4 HNC entry requirements:

- A relevant Level 3 qualification

### Level 5 HND entry requirements:

- The HND is a one year top-up from the HNC Mechanical Engineering. The units gained on your HNC must be transferable to suit the HND matrix

*"I am learning new skills every day which are transferable to the workplace, giving me a step up in my future career."*

Dillon Bunclark  
Mechanical Engineering



Scan here to find out more about Dillon's experience.



HN Flex courses  
available in this area

# FUTURE CAREERS IN ENGINEERING

The engineering sector is ideal for those who are innovative and aim for a high quality assurance.

Types of roles available:

Average salary

**£28,000**  
to  
**£60,000\***

## Mechanical Engineer

Mechanical engineers design, build and install machinery used in industries like power, engineering, transport and manufacturing.

### Day-to-day tasks\*:

- Turn research ideas into technical plans, using computer aided design/modelling (CAD/CAM)
- Carry out surveys of mechanical systems and equipment
- Research and assess new products and innovations
- Present design plans and data to managers and clients
- Oversee maintenance programmes and quality control
- Manage and lead a project team of technicians, designers and other engineering professionals

### Working environments\*:

You could work in an office, in a factory or visit sites. Your working environment may be outdoors in all weathers.

Average salary

**£22,000**  
to  
**£33,000\***

## Engineering Operative

Engineering operatives make, service and repair machinery and tools across lots of different industries.

### Day-to-day tasks\*:

- Follow engineering plans and job instructions
- Set up and operate computer-controlled machinery
- Make machine parts, using tools like lathes, cutters and grinders
- Apply coatings and finishes to manufactured products
- Service and repair machinery and carry out inspections and quality checks

### Working environments\*:

You could work in a factory, in a workshop or on a construction site. Your working environment may be dusty, hot and noisy. You may need to wear protective clothing.

## In-demand skills

**In-demand skills that commonly appear in job descriptions for roles within the engineering sector include\*\*:**

Communication, Detail oriented, Management, Planning, Problem solving



“The facilities are really modern and create a nice environment to learn. My company supported me to study here; they always use UCR to upskill their apprentices. The teachers are great and really supportive.”

Joseph Wilcock  
Electrical and Electronic Engineering



Scan here to find out more about Joseph's experience.

# ADVANCED AESTHETIC TREATMENTS

Level 4 Diploma in Advanced Aesthetic Treatments

 Delivered over two days or less

## Location

Rotherham Campus  
North Notts Campus

## Course Duration

18 weeks - Part-time

## Apply online via

Our campus websites

## Awarding Body

VTCT (ITEC)

## Course Overview

This course is aimed at students who are qualified Level 3 practitioners aged 18 and over with a keen interest in taking their career a step further. Through this qualification, learners can expand their expertise in advanced aesthetic treatments and progress to professional roles like Level 4 Aesthetic Practitioners.

Developed in collaboration with industry employers and informed by national and international standards, this qualification provides all the essential skills required to work effectively as a fully qualified aesthetic practitioner in a commercial setting.

## Modules Covered

- Principles, practice, and ethics of advanced aesthetic therapies
- Investigative consultation for advanced aesthetic therapies
- Skin science for advanced aesthetic therapies
- Skin needling
- Chemical peel
- Dermaplaning

## Why Study With Us?

Gain practical experience through work placements within a commercial beauty salon, where you can learn from industry-experienced and well-qualified tutors who have many years of industry experience. All tutors have specialist qualifications and knowledge to bring to their teaching, and you can also:

- Benefit from our links with local salons.
- Enrichment opportunities include topics such as resilience, healthy eating, and customer care.
- Have the opportunity to attend masterclasses and workshops in subject areas.
- Attend trips such as the Beauty Therapy Trade Shows.

## Career Opportunities

- Employment opportunities within skin clinics offering advanced beauty therapy treatments.
- Progression on to other level 4/5 courses including aesthetic treatments.
- Self employed
- Mobile

## Entry Requirements

- Level 2 and Level 3 Beauty Therapy qualification

# HAIR AND BEAUTY



# DERMAPLANING

Level 4 in Dermaplaning

 **Delivered over two days or less**

### Location

Rotherham Campus  
North Notts Campus

### Course Duration

1 year - Part-time

### Apply online via

Our campus websites

### Awarding Body

VTCT

### Course Fee

£250 per year

## Course Overview

This course delivers and develops the learners' knowledge, understanding and practical skills when using dermaplaning techniques to enhance appearance.

It covers the skills involved in providing a thorough consultation to establish client suitability for treatment and the knowledge on how to formulate a specific treatment plan tailored to suit individual client needs.

Learners will also develop the knowledge required to provide pre and post-treatment advice and post care to ensure the client receives the full benefit of the treatment.

## Modules Covered

- Enhance appearance using dermaplaning techniques

## Why Study With Us?

Well-equipped salons in a town centre campus with easy access to transport networks. Highly qualified staff with a vast amount of experience within the industry and education.

## Career Opportunities

- Employment opportunities within skin clinics offering advanced beauty therapy treatments.
- Progression on to other level 4/5 courses including aesthetic treatments.
- Self employed
- Mobile

## Entry Requirements

- Level 3 Beauty Therapy qualification
- You will be expected to purchase a uniform and kit

# LASER AND LIGHT

Level 4 in Laser and Intense Pulsed Light (IPL) Treatments

 Delivered over two days or less

## Location

Rotherham Campus  
North Notts Campus

## Course Duration

1 year - Full-time

## Apply online via

Our campus websites

## Awarding Body

VTCT

## Course Fee

Please see website

## Course Overview

This course is for those who wish to pursue a career as an employed and/or self-employed beauty therapist specialising in advanced skin treatments.

You will be taught by experienced industry professionals and gain hands-on practical experience in our commercial on-site salons.

Your course assessments will include practical assessments as well as assignments and online exams.

## Modules Covered

- Provide electrical epilation
- Advanced epilation techniques
- Laser and light treatments for hair removal
- Laser and light treatments for skin rejuvenation
- Management of health, safety and security in the salon
- Physiology of ageing
- Quality management of client care in the hair and beauty sector

## Why Study With Us?

Learn from industry-experienced and well-qualified tutors who have many years of industry experience, and continue to work in the sector. Staff possess specialist qualifications and knowledge which they bring to their teaching

Gain practical skills within our commercial and training beauty salons, and benefit from our links with local beauty salons and employers. You will have the opportunity to take part in enrichment activities, including additional industry skills sessions and cross-college events.

## Career Opportunities

After completing this course, you could progress to our Level 4 Skin Needling or Level 4 Skin Peeling qualifications.

Or you could go on to work as a Beauty Therapist in a range of settings including:

- Commercial salons
- Independent/self-employed/mobile /home-based settings
- Cruise liners
- Hospitals

## Entry Requirements

- Level 3 qualification or equivalent in Beauty Therapy
- GCSE English at grade C/4 or above
- Successful interview with a course tutor
- You will be expected to purchase a uniform and kit and pay for educational visits

# MICROBLADING

Level 4 in Enhancing Eyebrows using Microblading Techniques

 Delivered over two days or less

## Location

Rotherham Campus  
North Notts Campus

## Course Duration

1 year - Full-time

## Apply online via

Our campus websites

## Awarding Body

VTCT

## Course Fee

£941 per year

## Course Overview

This qualification is based on attaining professional competence within the discipline of microblading and includes the required elements to work effectively as a microblading technician.

The qualification will prepare learners for employment in skin clinics offering advanced treatments.

## Modules Covered

- Client care and consultation
- Enhance appearance using microblading techniques
- Anatomy and physiology for microblading techniques
- Eyebrow shaping services
- Health and safety in the salon

## Why Study With Us?

Well-equipped salons in a town centre campus with easy access to transport networks. Highly qualified staff with a vast amount of experience within the industry and education.

## Career Opportunities

- Employment opportunities within skin clinics offering advanced beauty therapy treatments.
- Progression on to other level 4/5 courses including aesthetic treatments.
- Employment in brow bars
- Self employed

## Entry Requirements

- Level 3 Beauty Therapy qualification
- You will be expected to purchase a uniform and kit

# SKIN NEEDLING

Level 4 in Skin Needling

 Delivered over two days or less

## Location

Rotherham Campus  
North Notts Campus

## Awarding Body

ITEC

## Course Duration

1 year - Part-time

## Course Fee

Please see website

## Apply online via

Our campus websites

## Course Overview

Throughout this qualification, learners will develop their knowledge and understanding of relevant anatomy and physiology and health and safety pertaining to level 4 non-medical aesthetic therapies.

They will also develop the knowledge, understanding and skills to consult with and analyse clients whilst providing skin needling treatments

## Modules Covered

- Principles and practice of non-medical aesthetic therapies
- Advanced consultation for non-medical aesthetic therapies
- Advanced skin care for non-medical aesthetic therapies
- Provide cosmetic skin needling treatments

## Why Study With Us?

Well-equipped salons in a town centre campus with easy access to transport networks. Highly qualified staff with a vast amount of experience within the industry and education.

## Career Opportunities

- Employment opportunities within skin clinics offering advanced beauty therapy treatments
- Progression on to other level 4/5 courses including aesthetic treatments
- Self employed
- Mobile

## Entry Requirements

- Level 3 Beauty Therapy qualification
- You will be expected to purchase a uniform and kit

# SKIN PEELING

Level 4 in Skin Peeling

 Delivered over two days or less

## Location

Rotherham Campus  
North Notts Campus

## Awarding Body

ITEC

## Course Duration

1 year - Part-time

## Course Fee

Please see website

## Apply online via

Our campus websites

## Course Overview

This qualification is an advanced therapy qualification aimed at level 3 practitioners aged 18 and over.

Throughout the qualification learners will develop knowledge, understanding and practical skills using skin peel products and techniques to rejuvenate the condition of the skin. They will prepare and apply a range of skin peels as well as providing relevant pre and post care advice.

## Modules Covered

- Provide skin peeling treatments

## Why Study With Us?

Well-equipped salons in a town centre campus with easy access to transport networks. Highly qualified staff with a vast amount of experience within the industry and education.

## Career Opportunities

- Employment opportunities within skin clinics offering advanced beauty therapy treatments
- Progression on to other level 4/5 courses including aesthetic treatments
- Employment on skin care counters
- Self employed

## Entry Requirements

- Level 3 Beauty Therapy qualification
- You will be expected to purchase a uniform and kit



# FUTURE CAREERS IN HAIR AND BEAUTY

The hair and beauty sector is ideal for those who are interested in advising others with styling and have a creative flair.

## Types of roles available:

Average salary

**£21,000**  
to  
**£25,000\***

### Beauty Consultant

Beauty consultants give tailored advice to customers on beauty products, perfumes and treatments, and help them choose which ones to buy.

#### Day-to-day tasks\*:

- Talk to customers about what they want
- Keep work areas and equipment clean
- Stay up to date with new product ranges and trends
- Demonstrate products and make recommendations to customers

#### Working environments\*:

You could work at a store, in a beauty clinic or at a client's home. You may need to wear a uniform.

Average salary

**£23,000**  
to  
**£29,000\***

### Beauty Therapist

Beauty therapists provide face and body treatments to help clients look and feel better.

#### Day-to-day tasks\*:

- Give a facial by cleansing, massaging and toning a client's skin
- Do a makeover by applying and advising on make-up
- Shape eyebrows and colour eyelashes
- Give manicures, pedicures and treatments like extensions and nail art
- Remove unwanted facial and body hair
- Do non-surgical skin improvement treatments
- Offer ultraviolet (UV) treatments and spray tanning and give related treatments, if trained to do so, such as aromatherapy

#### Working environments\*:

You could work at a store, on a cruise ship, in a beauty clinic or from home. You may need to wear a uniform.

### In-demand skills

**In-demand skills that commonly appear in job descriptions for roles within the hair and beauty sector include\*\*:**

Cleanliness, Communication, Customer service, Detail oriented, Professionalism

\*nationalcareers.service.gov.uk

\*\*Lightcast 2026

# MEDIA, MOVING IMAGE AND PHOTOGRAPHY

Bachelor of Arts (Hons) in Media, Moving Image and Photography

 Delivered over two days or less

### Location

University Centre Rotherham  
Rotherham Campus

### Course Duration

3 years - Full-time

### Apply online via

Our campus websites  
UCAS Centre Code 'R52'

### Awarding Body

University of Hull

### Course Fee

£6,900 per year

### UCAS Points

64

## Course Overview

This course focuses on the creative industries, within the sectors of media and photography.

It embraces the ever-changing technologies and platforms associated within the lens-based industries and aims to develop you into a work-ready, creative, independent and highly skilled media and photography practitioner.

Working across either a media or photography pathway or a combination of the two, students will become production ready whilst also exploring the mediums from cultural, historical and academic perspectives.

The modules on this course will allow students to work on both self-generated and client-led briefs, which will challenge and inspire students to think creatively.

These skills will enable students to gain work placements, find freelance opportunities and gain an insight into the lens-based industries.

### Specialist Pathway modules include: (Media pathway)

- Sound Design
- Scriptwriting for Moving Image
- Advanced Production for Moving Image
- Photographic Genres and Technologies
- Introduction to the Artists Book
- Digital Story Telling

### Year 3:

- Dissertation
- Freelance Practice
- Marketing and Branding for Lens-Based Practitioners
- Realisation and Development
- Planning and Developing an Exhibition

## Why Study With Us?

We provide smaller study groups with training from industry professionals in industry settings.

Students will have access to industry-standard facilities, including TV studio, radio studio, photography studio, a traditional photographic dark room and edit suites.

Trips will also take place during the course of study including film festivals, exhibitions, trade shows and creative based residentials.

## Career Opportunities

Upon completion of this course you could go into employment as a Photographer, a TV or Film Producer/Director, a Photography or Moving Image Editor, a small business owner or Freelancer.

## Entry Requirements

- A relevant Level 3 qualification
- GCSE English and maths at grade C/4 or above or equivalent
- You will also be expected to provide examples or a showreel/portfolio of work at interview

# MEDIA, MOVING IMAGE AND PHOTOGRAPHY



## FUTURE CAREERS IN MEDIA AND PHOTOGRAPHY

The Media and Photography sector is ideal for those who are interested in the creation of content for film, television and radio.

Types of roles available:

Average salary

**£17,000**  
to  
**£45,000\***

### Photographer

Photographers take and process pictures of people, places, products and events.

#### Day-to-day tasks\*:

- Discuss a project with the client and agree the 'brief'
- Find and prepare locations for the photo session
- Set up equipment and lighting, and take photographs
- Edit and process images, using industry software
- Check colour match accuracy and image quality, and select the best images for the client to use online or in print

#### Working environments\*:

You could work in a creative studio. Your working environment may be physically demanding and outdoors in all weathers.

Average salary

**£32,000**  
to  
**£42,000\***

### Medical Illustrator

Assistant production co-ordinators support producers in making film or TV programmes.

#### Day-to-day tasks\*:

- Record a patient's condition using a digital camera or video
- Take photographs to monitor the effectiveness of operations and treatments
- Capture 3D, infrared and ultraviolet images using specialist equipment
- Produce anatomically correct drawings and illustrations
- Work closely with different departments, such as dermatology, dental or ophthalmics
- Photograph non-accidental injuries in forensic photography
- Create resources for teaching and research purposes

#### Working environments\*:

You could work in an NHS or private hospital or in a photographic studio. Your working environment may be emotionally demanding. You may need to wear protective clothing.

### In-demand skills

**In-demand skills that commonly appear in job descriptions for roles within the media and photography sector include\*\*:**

Editing, Communication, Organisation, Planning, Management.

\*nationalcareers.service.gov.uk

\*\*Lightcast 2026

# THEATRE, ACTING AND PERFORMANCE

**Bachelor of Arts (Hons) in Theatre, Acting and Performance**

 **Delivered over two days or less**

## Location

University Centre Rotherham  
Rotherham Campus

## Course Duration

3 years - Full-time

## Apply online via

Our campus websites  
UCAS Centre Code 'R52'

## Awarding Body

University of Hull

## Course Fee

£6,900 per year

## UCAS Points

64

## Course Overview

This course offers a broad practical curriculum underpinned by academic study, with the opportunity for you to influence the way you work. The main pathway is acting however, we do offer alternative modules for the musical theatre pathway.

You will gain an insight into the creation of new work, acting and performance in a range of styles from classical to contemporary. You will discover the theoretical and historical backdrop to theatre, acting and performance and will obtain the industry-desired skills and contacts.

## Modules Covered

### Year 1

- Approaches to Acting
- Acting with a Mask
- Devising Innovative Performance
- Theatre in Education and Community Arts
- Preparation, Process and Production
- Historical Context of Performance
- Musical Theatre pathway students will study Singing, Movement and Dance

### Year 2

- Approaches to Acting
- Site Specific Performance
- Performing Shakespeare
- Performance Study and Demonstration
- TV and Screen Acting
- Musical Theatre pathway students will do Dance and Acting for Musical Theatre

### Year 3

- Final Integrated Performance
- Creative Research Dissertation
- Personal and Professional Development
- Musical Theatre pathway students will do a final Musical Theatre Performance

## Why Study With Us?

The course includes live projects in partnership with a range of companies and organisations such as the Rotherham Metropolitan Borough Council (RMBC) events team, A Mind Apart Theatre, Open Minds Theatre Company – Life Act, Break-Out Arts, Next Left Political Theatre Collective, Rotherham Music, Rotherham United and South Yorkshire Fire and Rescue as well as the opportunity to deliver workshops to local schools.

Our students also have the opportunity to visit Whitby/Scarborough for three nights to write, act in and direct short films, which are then screened and entered into competitions.

We have an impeccable 100% pass rate with former students from the course being recognised as Student of the Year. Alumni have gone on to set up companies such as Renegade Productions, Anti-Social Theatre, work freelance, act professionally and teach.

A number of our students have performed at the Crucible Theatre and at the National Theatre for the Connexions festival as well as on tour with Rotherham Underground.

## Career Opportunities

After successful completion of this course you can progress into acting, directing and arts-related pathways, including stage management, script writing or working freelance in community or youth workshops.

Alternatively, you can progress onto further study on a PGCE or continue your studies to achieve a Masters Degree.

We currently have a 99% success rate for students gaining employment in the industry after completing the degree.

## Entry Requirements

**64 UCAS points from a combination of the following:**

- Minimum of two A Levels
- Level 3 Extended Diploma
- GCSE English at grade C/4 is essential and GCSE maths C/4 is desirable but not compulsory
- Access to HE qualification

# PERFORMANCE



# FUTURE CAREERS IN PERFORMANCE

The performance sector is ideal for those who are interested in the production and delivery of events and performances.

## Types of roles available:

### Actor

Actors use speech, movement and expression to bring characters to life in theatre, film, television and radio.

Average salary  
**Variable\***

#### Day-to-day tasks\*:

- Work with an agent to find new roles and opportunities
- Prepare for and go to auditions, research roles, learn lines and attend rehearsals
- Attend fittings for costumes
- Support back stage activities such as costume or prop management
- Work as a voice over artist or as an extra

#### Working environments\*:

You could work at a TV studio, in an office, at a film studio or on a film set. Your working environment may be outdoors some of the time and you may spend nights away from home.

### TV or Film Producer

Producers turn ideas for potential films and TV programmes into reality. They put together the creative team to make and broadcast productions.

Average salary  
**Variable\***

#### Day-to-day tasks\*:

- Research source materials for film and TV ideas
- Commission writers to create draft scripts
- Work out what resources are needed to begin production
- Identify sources of funding and raise finances, hire staff, cast and crew
- Check and approve locations, pitch ideas to TV companies and film studios to back your project
- Plan filming schedules, manage cash flow, schedules and a budget and work with marketing companies and distributors

#### Working environments\*:

You could work at a TV studio, in an office, at a film studio or on a film set. Your working environment may be outdoors some of the time and you may spend nights away from home.

### In-demand skills

**In-demand skills that commonly appear in job descriptions for roles within the performance sector include\*\*:**

Communication, Energetic, Improvisation, Public speaking, Resilience

\*nationalcareers.service.gov.uk

\*\*Lightcast 2026



# YOUTH JUSTICE PRACTITIONER

FdSc Youth Justice Practitioner Higher Technical Qualification (HTQ)

### Location

[Dearne Valley Campus](#)

### Awarding Body

[Sheffield Hallam University](#)

### Course Duration

Full-time: 2 years  
Part-time: 3 years

### Course Fee

£6,900 per year

### Apply online via

[Our campus websites](#)

## Course Overview

The qualification is designed to explore the diverse and changing context of youth justice, supporting learners to develop knowledge and understanding of the specific needs of children and young people, including the issues impacting their identity and development, with a specific focus on crime, criminal behaviour and responses to these issues.

## Modules Covered

- Introduction to Youth Justice
- 'Child First' Youth Justice
- Children & Young People: Needs, Rights & Equality
- Assessment and Decision Making
- Contextual Safeguarding
- Professionalism and Collaborative Practice

## Why Study With Us?

At Dearne Valley, you are never flying solo. We operate as one team. From our industry-expert tutors to your fellow adult learners, we move forward together. You'll find a network of peers who share your drive, creating a high-energy environment where success is contagious.

While studying for an HTQ as a Youth Justice Practitioner with us, you will gain:

- Professional Mastery: Gain high-level technical knowledge that commands respect.
- Personal Growth: Prove to yourself that you can conquer new heights.
- Future-Proofing: Secure your place in the modern economy with advanced expertise.

## Career Opportunities

This qualification can lead to progression towards careers such as:

- Police Cadet or Police Officer (with further training)
- Youth Offending Officer
- Firefighter or Fire Cadet
- Border Force or Immigration Officer
- Prison or Probation Assistant
- Security and Emergency Response roles

## Entry Requirements

- Level 3 equivalent in a related topic
- Maths & English grades 4 or above



# FUTURE CAREERS IN PROTECTIVE SERVICES

The Protective Services sector is ideal for those who want to work in a fast-paced environment, have an interest working frontline supporting the public and have a passion for fitness.

Types of roles available:

Average salary

**£29,000-46,000\***

## Police Officer

Police officers respond to incidents, investigate crimes and work closely with communities to keep them safe.

### Day-to-day tasks\*:

- Respond to calls for help from the public
- Investigate incidents, crimes and offences
- Collect witness statements, intelligence and evidence
- Interview suspects and make arrests
- Give evidence in court
- Control traffic and crowds at large public events and gatherings
- Advise the public on personal safety and crime prevention

### Working environments

You could work on a patrol or at a police station. Your working environment may be outdoors in all weathers and physically and emotionally demanding. You may need to wear a uniform.\*

Average salary

**£24,000-38,000\***

## Criminologist

Criminologists look at the reasons why people commit crimes and find ways to reduce re-offending.

### Day-to-day tasks\*:

- Research the reasons why people commit crimes
- Advise policy makers in the justice and policing systems
- Analyse data from surveys and intelligence to spot trends
- Work on crime reduction and rehabilitation programmes
- Recommend ways to improve the effectiveness of court sentences
- Speak to offenders and ex-offenders in prisons and probation services
- Attend conferences and present research findings
- Teach students at college or university

### Working environments

You could work in an office, in a prison or visit sites. Your working environment may be emotionally demanding and you may spend nights away from home.\*

## In-demand skills

**In-demand skills that commonly appear in job descriptions for roles within the sport sector include\*:**

Communication Skills, Customer Service, Investigation, Management, Planning

\*nationalcareers.service.gov.uk

\*\*Lightcast 2026



# SPORT AND PUBLIC SERVICE

## COMMUNITY COACHING

Higher National Certificate in Community Coaching for England

 Delivered over two days or less

### Location

University Centre Rotherham  
Dearne Valley Campus

### Course Duration

1 years - Part-time

### Apply online via

Our campus websites  
UCAS Centre Code 'R52'

### Awarding Body

Pearson

### Course Fee

£6,900 per year

### Course Overview

Our Community Coaching Higher Skills qualification is designed to equip you with the expertise, confidence, and practical skills needed to thrive in the dynamic world of sports and community coaching.

This engaging programme offers a comprehensive foundation in coaching principles, ensuring you develop the knowledge and hands-on experience to create impactful and inclusive coaching sessions.

#### You'll explore key areas, including:

##### Coaching Theories and Techniques

Master the essential skills to plan and deliver effective coaching sessions.

##### Communication and Leadership

Learn how to engage, inspire, and motivate individuals and teams.

##### Sport and Physical Activity for Wellbeing

Understand how coaching contributes to overall health and wellness.

##### Sports Psychology and Development

Gain insights into athlete motivation, mindset, and progression.

##### Sports Nutrition

Enhance performance and recovery with expert guidance on nutrition.

### Modules Covered

- Lifestyle Coaching
- Training, Fitness testing
- Coaching practice and skill development
- Professional skills
- Anatomy and Physiology
- Fundamentals of Sport and Exercise Psychology
- Nutrition

### Why Study With Us?

With a strong emphasis on practical learning, you'll apply your knowledge in real-world coaching environments, gaining invaluable experience under the guidance of industry professionals and exploring theoretical understanding through flexible online delivery.

We offer a flexible hybrid delivery model which provides opportunities for learners to develop practical coaching skills at the Dearne Valley Campus, utilising the fantastic sports facilities. And access to digital online theoretical learning.

### Career Opportunities

- Sports Coach
- Performance Analyst
- Sports Development Officer
- Sports Psychologist
- Strength and Conditioning Coach
- Personal Trainer
- Exercise Referral Specialist
- Youth Worker
- Sports Scientist

### Entry Requirements

- BTEC Level 3 qualifications in Sport or Sport and Exercise Science or related level 3 equivalent qualification
- Or an Access to HE qualification
- Or 5 GCSE Grades A\* to C or Grade 9 to 4 in subjects such as English and Maths



# FUTURE CAREERS IN SPORT & PUBLIC SERVICE

The sports sector is ideal for those who have a passion for fitness and wish to share that drive with others.

Types of roles available:

## Sports Coach

Sports coaches teach sports skills to individuals and teams of all abilities.

### Day-to-day tasks:

- Plan fun, engaging and safe coaching activities and sessions
- Give feedback on performance and how to improve skills and technique
- Motivate and inspire your students to fulfil their potential
- Offer advice on nutrition, lifestyle and preparation
- Design advanced programmes for elite sportspeople
- Support performers at events and competitions

### Working environments

You could work at a fitness centre, on a sports field, at a university, at a school or at a college. Your working environment may be physically demanding and outdoors in all weathers.\*

Average salary

**£19,000-28,000\***

## Sports Development Officer

Sports development officers organise projects and training to encourage people to take part in sport and have a healthier lifestyle.

### Day-to-day tasks:

- Find and train staff, coaches and volunteers for projects
- Promote and run projects and activities
- Monitor and evaluate projects
- Find funding, manage resources and budgets
- Put local and national policies into practice
- Attend meetings, seminars and conferences
- Coach or supervise sports activities

### Working environments

You could work in an office, at a school, on a sports field, at a fitness centre or at a college. Your working environment may be outdoors some of the time.\*

Average salary

**£23,000-35,000\***

## In-demand skills

**In-demand skills that commonly appear in job descriptions for roles within the sport sector include\*:**

Coaching, Teaching, Communication, Management, Enthusiasm

\*\*EMSI 2025 \*nationalcareers.service.gov.uk

# COURSE INDEX

## Access to Higher Education (HE)

Level 3 Computing	67
Level 3 Criminology	69
Level 3 Health Science Professions	70
Level 3 Science	71

## Accounting, Business and Management

BA (Hons) in Business and Management	73
Level 4 Diploma in Accounting	74

## Animal Management and Land-Based Industries

HNC/HND in Animal Management	77
------------------------------	----

## Arts and Graphics

Foundation Degree in Graphic Design	81
Level 4 BTEC in Art, Design and Media Practice	83
BA (Hons) Top-up in Graphic Communication Design	85

## Caring Professions

Higher Education Certificate in Professional Practice in Health and Social Care	89
Foundation Degree in Professional Practice in Health and Social Care	91
Level 5 Apprenticeship in Leader in Adult Care	92
BTEC Level 4 and 5 in Early Years Professional Leadership	93

## Computing and Digital

BSc (Hons) in Computing AI & Cloud	97
HNC/HND in Esports	98
HNC/HND in Computing	100
Foundation Degree in Games Development	101

## Construction

HNC in Modern Methods of Construction (HTQ)	105
---	-----

## Education

BA (Hons) Top-up in Education and Professional Development	109
Certificate in Education (Lifelong Learning): Full-time	110
Certificate in Education (Lifelong Learning): Part-time	111
Foundation Degree Learning Support	112
Level 4 Certificate in Supporting the Learning of Learners with Special Educational Needs and Disability (SEND)	113
TESOL	114
Award in Internal Quality Assurance of Assessment Processes and Practice	115
Master of Arts (MA) Education and Professional Development	116
Teaching Assistant	117
PgCE/PGCE: Part-time	118
PgCE/PGCE: Full-time	119

## Engineering

HNC/HND Electrical and Electronic Engineering	123
HNC/HND Mechanical Engineering	125

## Hair and Beauty

Level 4 Advanced Aesthetic Treatments	129
Level 4 Dermaplaning	131
Level 4 Laser & Light	132
Level 4 Microblading	133
Level 4 Skin Needling	134
Level 4 Skin Peeling	135

## Media, Moving Image and Photography

BA (Hons) Media, Moving Image and Photography	139
---	-----

## Performance

BA (Hons) Theatre, Acting and Performance	143
---	-----

## Protective Services

FdSc HTQ Youth Justice Practitioner	147
-------------------------------------	-----

## Sport and Public Service

HNC in Community Coaching	151
---------------------------	-----

# APPLY DIRECT



*With*

**University  
Centre  
Rotherham**



**Easy Applications  
No Fees**

Complete your application in just a few steps directly on our website and access one-to-one guidance from our dedicated team throughout the application process.



# NOTES

---

---

---

---

---

---

---

---

---

---

---

---

---

---

---

---

---

---

---

---

---

---

## Open Events

**Wednesday 30<sup>th</sup> September 2026**

4.30pm – 6.30pm

**Wednesday 10<sup>th</sup> February 2027**

4.30pm – 6.30pm

**Wednesday 19<sup>th</sup> May 2027**

4.30pm – 6.30pm

Please refer to our website

[ucr.rotherham.ac.uk/open-events](http://ucr.rotherham.ac.uk/open-events)



Rotherham College  
North Notts College  
Dearne Valley College  
and  
University Centre Rotherham

Part of  
**RNN** GROUP

**RNN GROUP**  
SUSTAINABILITY



# University Centre Rotherham

**2027/2028**